

VZORNÍK TOMASELLA

ITALIER



# ČALOUNĚNÍ

# SYMBOLY PRO OŠETŘENÍ TEXTILIÍ



Pouze ruční praní / *Hand wash only*



Prát při maximální teplotě 30° / *Wash at max. temp. 30°*



Prát při maximální teplotě 30°, se sníženými otáčkami  
/ *Wash at max. temp. 30° and with reduced mechanical action*



Prát při maximální teplotě 40°  
/ *Wash at max. temp. 40°*



Prát při maximální teplotě 40°, se sníženými otáčkami  
/ *Wash at max. temp. 40° and with reduced mechanical action*



Prát při maximální teplotě 60°  
/ *Wash at max. temp. 60°*



Prát při maximální teplotě 60°, se sníženými otáčkami  
/ *Wash at max. temp. 60° and with reduced mechanical action*



Výrobek se nesmí prát / *Do not wash in water*



Nesušit v bubnové sušičce / *Wash without tumble dry*



Výrobek se nesmí bělit / *Do not use bleach*



Žehlení při minimální teplotě / *Iron at low temperatures*



Žehlení při střední teplotě / *Iron at medium temperatures*



Žehlení při maximalní teplotě / *Ironed at high temperatures*



Protipožární tkanina.



Žehlit na rubové straně při nízkých teplotách / *Iron on reverse side and at low temperatures*



Nežehlit / *Do not iron*



Výrobek je možné čistit chemickými prostředky  
/ *Dry clean with any solvent*



Suché čištění jakýmkoli rozpouštědlem, s výjimkou trichlorethylenu  
/ *Dry clean with any solvent, trichloroethylene excluded.*



Suché čištění trichlorethylenem a jemné praní. Nečistěte v prádelnách na mince.  
/ *Dry clean with trichloroethylene and delicate wash. Do not dry clean at coin laundries.*



Výrobek se nesmí chemický čistit / *Do not dry clean*



Zavěste ve vodorovné poloze  
/ *Hang up in horizontal position*



Zavěste bez mačkání / *Hang up without squeezing*



Lze sušit v bubnové sušičce  
/ *Tumble dry*



Sušení při nízké teplotě / *Tumble dry at reduced temperature*



Sušení při normální teplotě / *Tumble dry at normal temperature*



Nesušit v bubnové sušičce / *Do not tumble dry*



Tkanina vhodná pro venkovní použití.

# SLOŽENÍ LÁTEK

## Kód

<b>WO</b>	Vlna	Wool
<b>WP</b>	Alpaka	Alpaca
<b>WL</b>	Lama	Lama
<b>WK</b>	Velbloud	Camel
<b>WS</b>	Kašmír	Kashmir
<b>WM</b>	Mohér	Mohair
<b>WA</b>	Angora	Angora
<b>WG</b>	Vikuně	Vicuna
<b>WY</b>	Jak	Yak
<b>WU</b>		Guanaco
<b>WB</b>	Bobr	Beaver
<b>WT</b>	Vydra	Otter
<b>HA</b>	Srst	Hair
<b>SE</b>	Hedvábí	Silk
<b>CO</b>	Bavlna	Cotton
<b>KP</b>	Kapok	Kapok
<b>LI</b>	Len	Flax
<b>CA</b>	Pravé konopí	True hemp
<b>JU</b>	Juta	Jute
<b>AB</b>	Abaka	Abaca (Manila hemp)
<b>AL</b>	Alfa	Alfa
<b>CC</b>	Kokosové vlákno	Coir (coconut)
<b>GI</b>	Janovec	Broom
<b>RY</b>	Hedvábí	Rayon
<b>PES</b>	Polyester	Polyester
<b>PVC</b>	Polyvinilchlorid	Polyvinylchloride

## Kód

<b>KE</b>	Kenaf	Kenaf (Hibiscus hemp)
<b>RA</b>	Ramie	Ramie
<b>SI</b>	Sisal	Sisal
<b>SN</b>		Sun
<b>HE</b>		Henequen
<b>MG</b>		Maguey
<b>AC</b>	Acetát	Acetate
<b>AG</b>	Alginát	Alginate
<b>CU</b>	Měď	Cupro
<b>MD</b>		Modal
<b>PR</b>		Protein
<b>TA</b>	Triacetát	Triacetate
<b>VI</b>	Viskóza	Viscose
<b>PC</b>	Akryl	Acrylic
<b>CL</b>	Chlorovlákn	Chlorofibre
<b>FL</b>	Fluorovlákn	Fluorofibre
<b>MA</b>	Modakryl	Modacrylic
<b>PA</b>		Nylon
<b>PL</b>		Polyester
<b>PE</b>	Polyethylen	Polyethylene
<b>PP</b>	Polypropylen	Polypropylene
<b>PB</b>	Polykarbamid	Polycarbamide
<b>PU</b>	Polyuretan	Polyurethane

## Kód

<b>VY</b>	Vynylal	Vinylal
<b>TV</b>		Trivinyl
<b>EL</b>	Guma	Elastodiene
<b>EA</b>	Elastan	Elastane
<b>GL</b>	Skleněné vlákno	Glass fibre
<b>ME</b>	Kov	Metal
	Kovový	Metallic
	Pokovené	Metallised
<b>AS</b>	Azbest	Asbestos
<b>PI</b>	Papír	Paper

## SPECIFICKÉ OZNAČENÍ

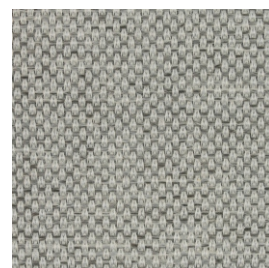
<b>IWS</b>	Čistá střížní vlna	Pure virgin wool
<b>WV</b>	Ovčí vlna	Fleece wool
<b>AF</b>	Jiná vlákna	Other fibres
<b>HL</b>		Cotton linen Union
<b>TR</b>	Zbytky textilu	Textile residues
	nebo neurčené složení	or unspecified composition
<b>TS</b>	Laminovaná tkanina	Laminated cloth
<b>SC</b>	Syntetický	Synthetic

KATEGORIE 1/One

## Easy Kat. 1/One



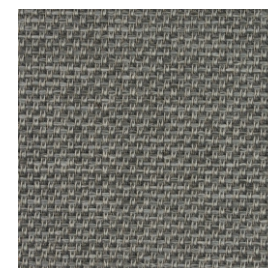
Easy 01



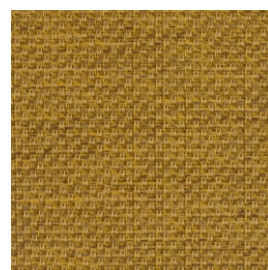
Easy 18



Easy 19



Easy 17



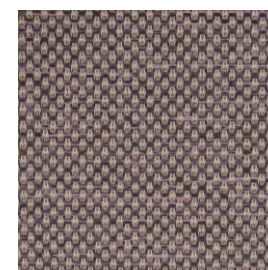
Easy 09



Easy 05



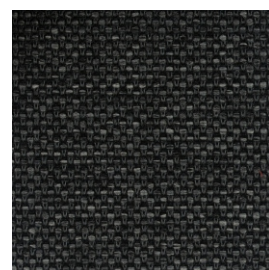
Easy 06



Easy 16



Easy 20



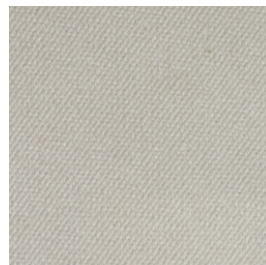
Easy 21

Složeni: 100% PL

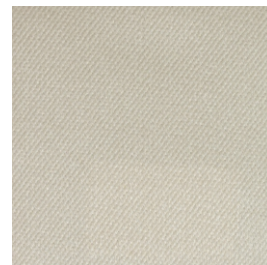


---

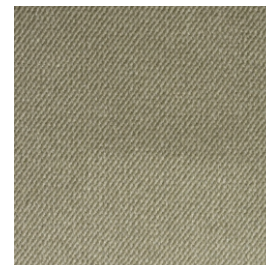
## Selfie Kat. 1/One



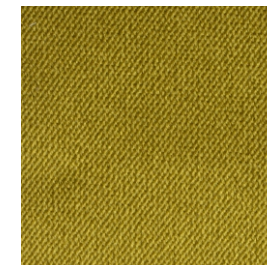
Selfie 600



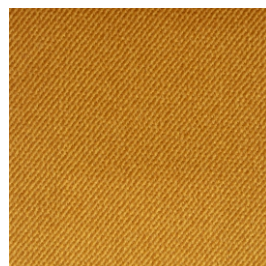
Selfie 101



Selfie 409



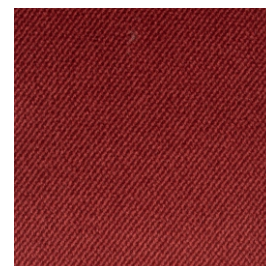
Selfie 811



Selfie 503



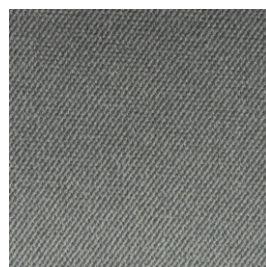
Selfie 315



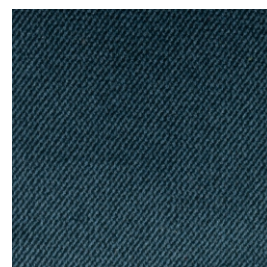
Selfie 302



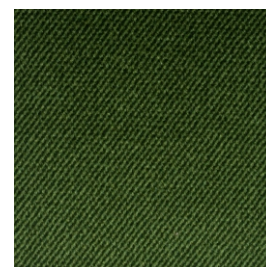
Selfie 900



Selfie 601



Selfie 714



Selfie 814



Selfie 615

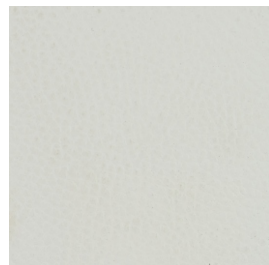
Složeni: 100% PL



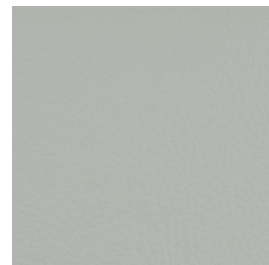


---

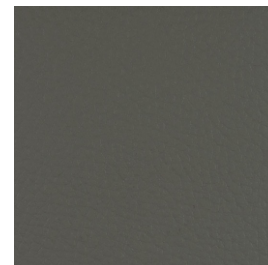
## Surround Kat. 1/One



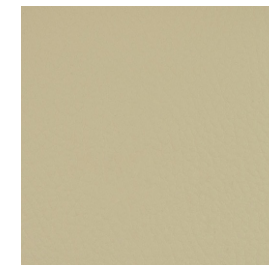
Surround 101



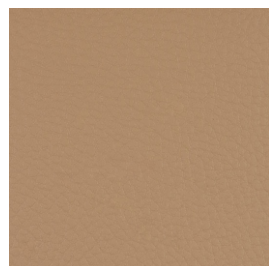
Surround 109



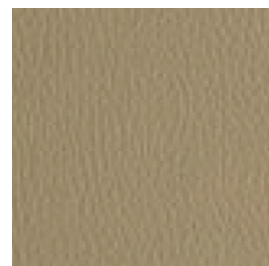
Surround 117



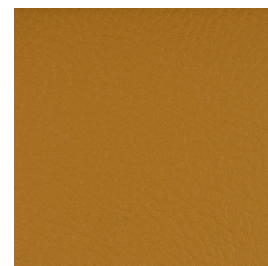
Surround 102



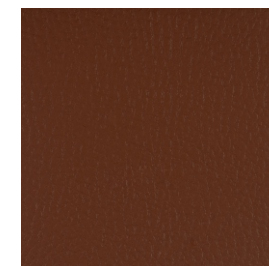
Surround 118



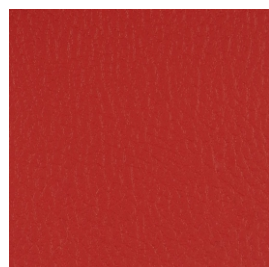
Surround 111



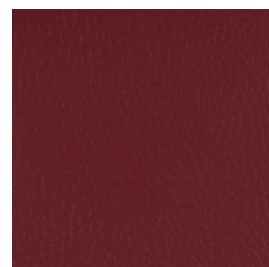
Surround 104



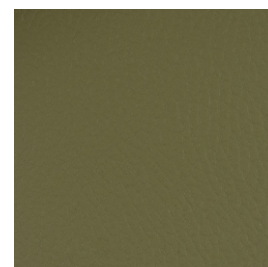
Surround 126



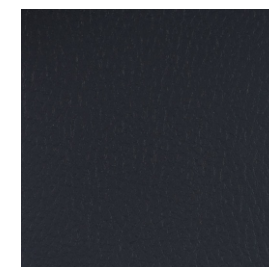
Surround 128



Surround 135



Surround 129



Surround 131

Složeni: 87,5% PVC, 12,5% CO



# KATEGORIE A

---

## Alkemia Kat. A



Alkemia 01



Alkemia 03



Alkemia 16



Alkemia 30



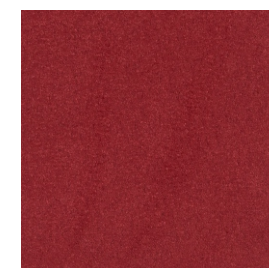
Alkemia 04



Alkemia 11



Alkemia 12



Alkemia 14



Alkemia 15



Alkemia 29



Alkemia 24



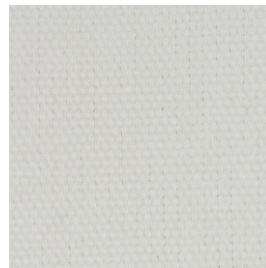
Alkemia 27

Složeni: 100% PES

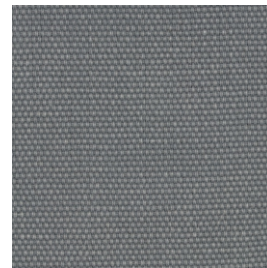


---

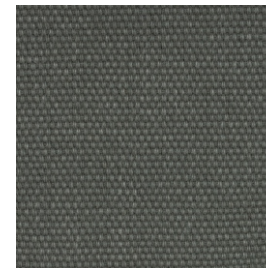
## Smile Kat. A



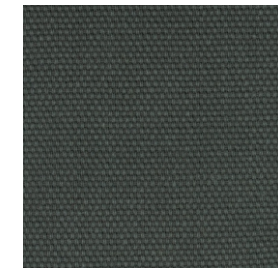
Smile 1



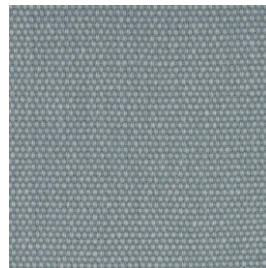
Smile 36



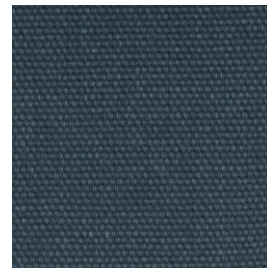
Smile 20



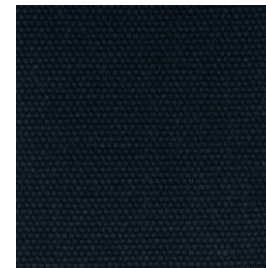
Smile 12



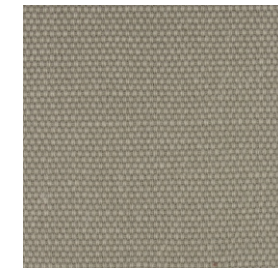
Smile 104



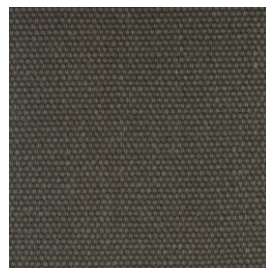
Smile 105



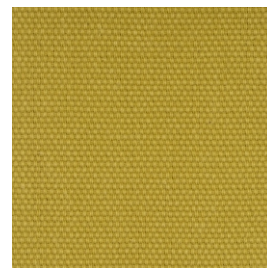
Smile 33



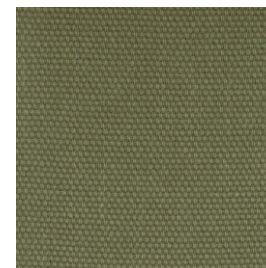
Smile 21



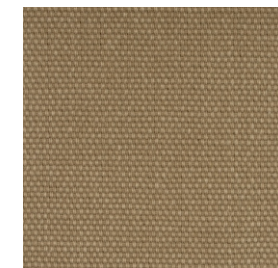
Smile 46



Smile 15



Smile 19



Smile 51

Složeni: 100% CO

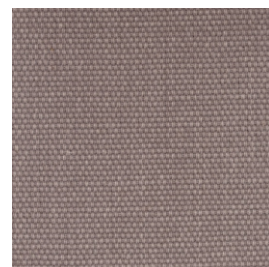


---

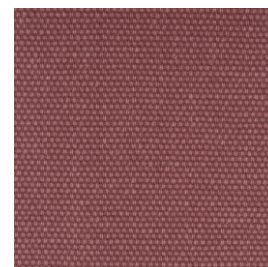
## Smile Kat. A



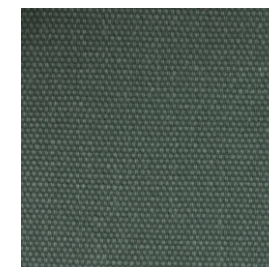
Smile 52



Smile 22



Smile 42



Smile 35

Složeni: 100% CO

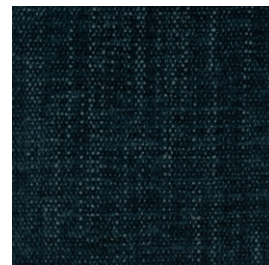


---

## Boston Kat. A



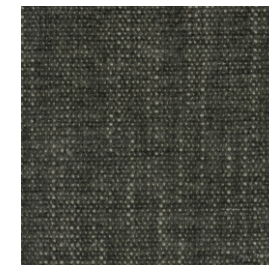
Cement



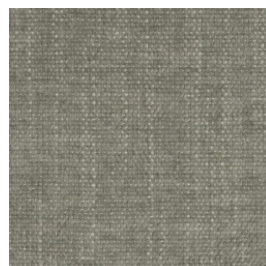
Ocean



Black



Ash



Light grey



Water green



Green



Forest



Mostaza



Mouse

Složeni: 100% PL



# KATEGORIE B

---

## Econabuk Kat. B



Econabuk 01



Econabuk 02



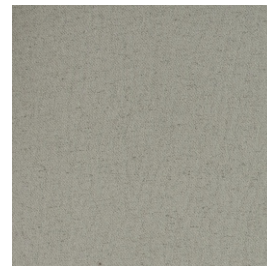
Econabuk 03



Econabuk 07



Econabuk 08



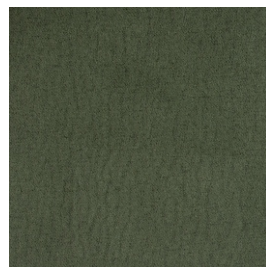
Econabuk 11



Econabuk 12



Econabuk 13



Econabuk 05

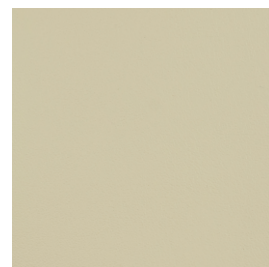
Složeni: 41% PU, 47% PL, 9% CO, 3% Glue



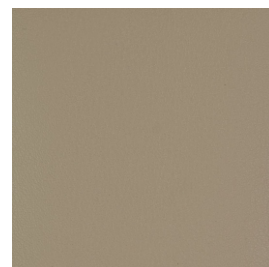
## Ecopelle Extrema Kat. B



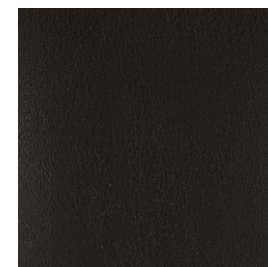
Ecopelle 01



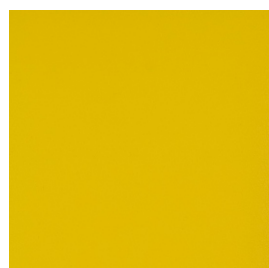
Ecopelle 04



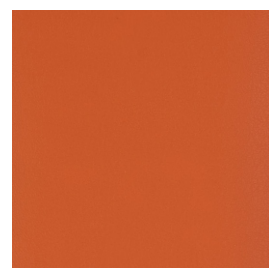
Ecopelle 34



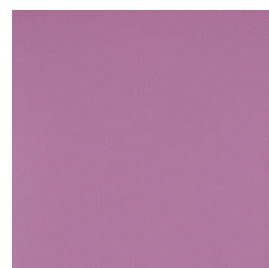
Ecopelle 12



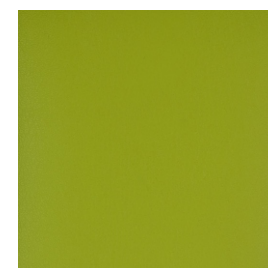
Ecopelle 23



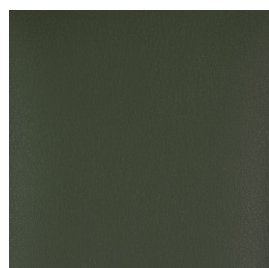
Ecopelle 13



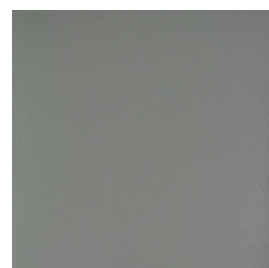
Ecopelle 09



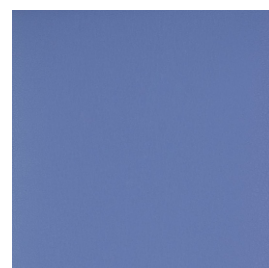
Ecopelle 08



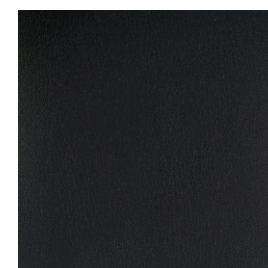
Ecopelle 15



Ecopelle 20

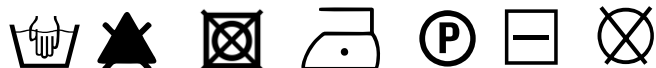


Ecopelle 29



Ecopelle 16

Složeni: 63% PU, 29% CO, 8% PL



---

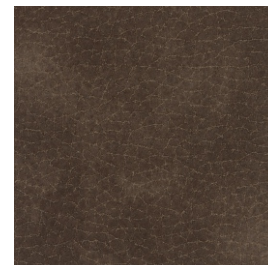
## Ecopelle vintage Kat. B



Ecopelle vintage 1008



Ecopelle vintage 101



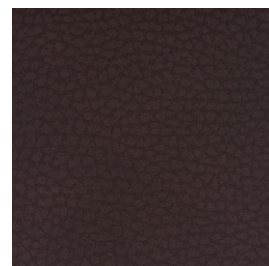
Ecopelle vintage 103



Ecopelle vintage 102



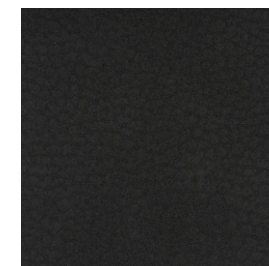
Ecopelle vintage 106



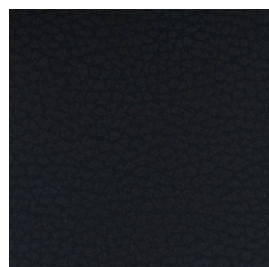
Ecopelle vintage 1015



Ecopelle vintage 1009



Ecopelle vintage 107



Ecopelle vintage 1011

Složeni: 80% PVC, 2% PU, 18% PL

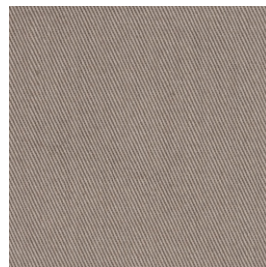


---

## Texas Kat. B



Texas 36



Texas 35



Texas 40



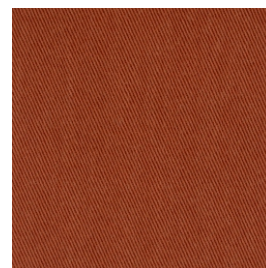
Texas 04



Texas 25



Texas 31



Texas 33



Texas 18



Texas 17



Texas 12



Texas 28



Texas 07

Složeni: 100% CO



---

**Texas** Kat. B



Texas 11



Texas 10

Složeni: 100% CO



---

## Daytona Kat. B



Daytona 60



Daytona 139



Daytona 158



Daytona 76



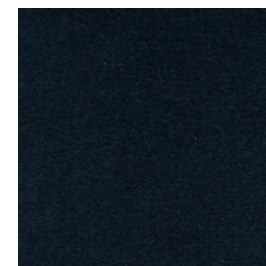
Daytona 165



Daytona 77



Daytona 78



Daytona 109

Složeni: 55% CO, 35% AC, 10% PA



KATEGORIE C

## Favola Kat. C



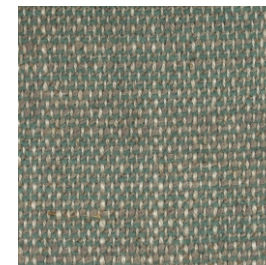
Favola 01



Favola 02



Favola 10



Favola 23



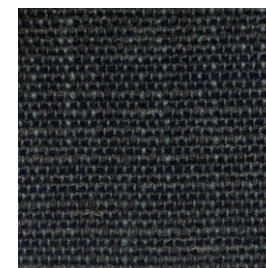
Favola 18



Favola 19



Favola 26



Favola 31

Složeni: 25% PL, 25% CO, 10% LI, 22% VI, 18% PC



## Lino froissé Kat. C



Lino froissé 011



Lino froissé 101



Lino froissé 100



Lino froissé 018



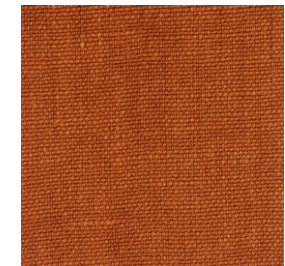
Lino froissé 010



Lino froissé 033



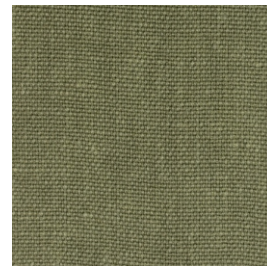
Lino froissé 036



Lino froissé 006



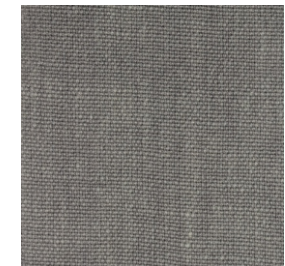
Lino froissé 015



Lino froissé 005



Lino froissé 123



Lino froissé 020

Složeni: 100% LI





---

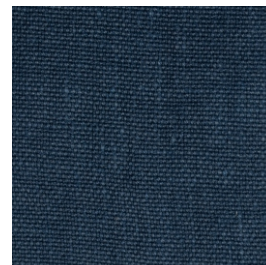
## Lino froissé Kat. C



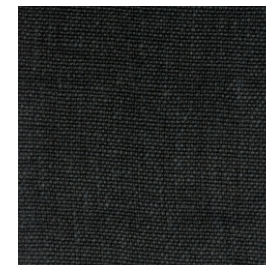
Lino froissé 022



Lino froissé 029



Lino froissé 116



Lino froissé 019

Složeni: 100% LI



## Linara Kat. C



Linara 16



Linara 13



Linara 21



Linara 04



Linara 44



Linara 03



Linara 186



Linara 194



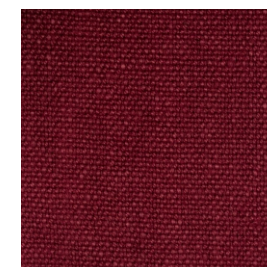
Linara 30



Linara 31



Linara 02



Linara 15

Složeni: 100% LI

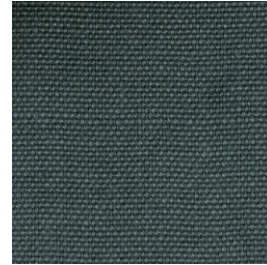


---

## Linara Kat. C



Linara 131



Linara o8

Složeni: 100% LI



# Allure unito

## Allure coordinato

### Sancho

Kat. C

#### Sancho

Složeni: 5% PL, 33% PC, 8% WO, 7% VI



#### Allure coordinato

Složeni: 69% VI, 31% LI



#### Allure unito

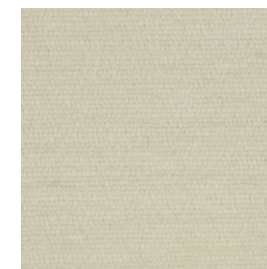
Složeni: 53% VI, 23% LI, 17% CO, 4% PL, 3% PC



Allure unito 99



Allure coordinato 101



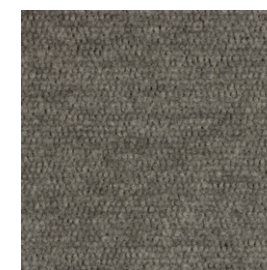
Sancho 01



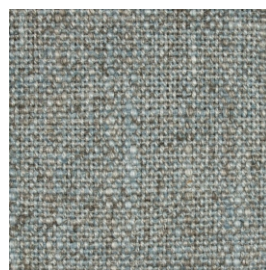
Allure unito 03



Allure coordinato 24



Sancho 05



Allure unito 11



Allure coordinato 51



Sancho 32



Allure unito 01



Allure coordinato 01



Sancho 09

# Allure unito

# Allure coordinato

# Sancho

Kat. C

## Sancho

Složeni: 5% PL, 33% PC, 8% WO, 7% VI



## Allure coordinato

Složeni: 69% VI, 31% LI

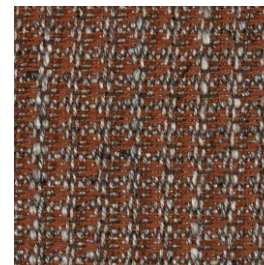


## Allure unito

Složeni: 53% VI, 23% LI, 17% CO, 4% PL, 3% PC



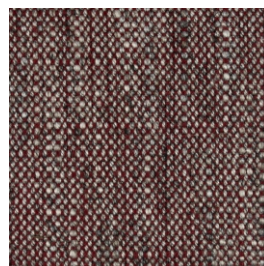
Allure unito 104



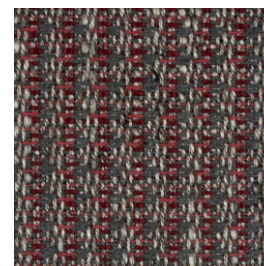
Allure coordinato 104



Sancho 20



Allure unito 105



Allure coordinato 105



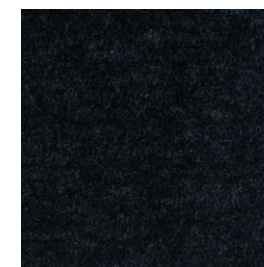
Sancho 18



Allure unito 106



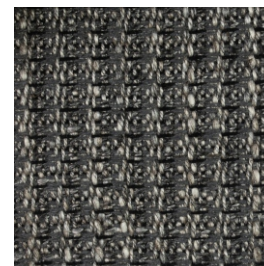
Allure coordinato 106



Sancho 11



Allure unito 100



Allure coordinato 100

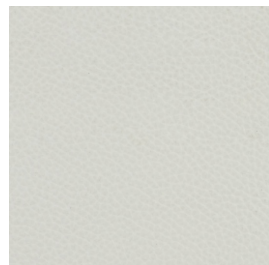


Sancho 10

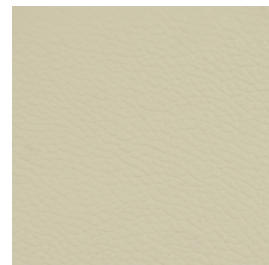
KATEGORIE

---

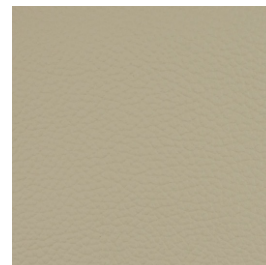
## Pelle Fiore Kat. E



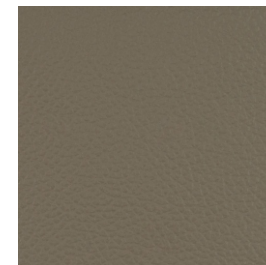
Bianco 810



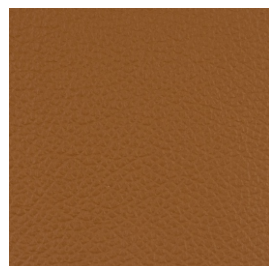
Avorio 872



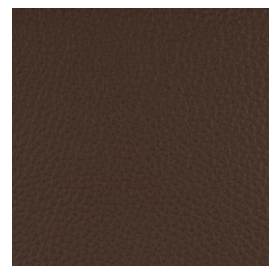
Beige 930



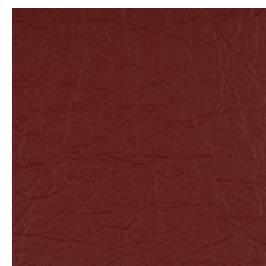
Fumo 931



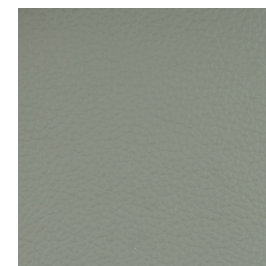
Biscotto 818



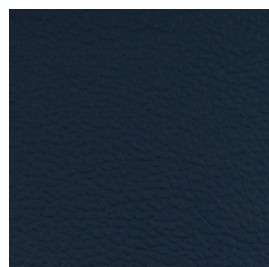
Marrone 824



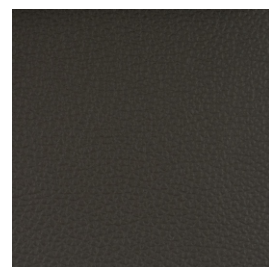
Rosso cupo 844



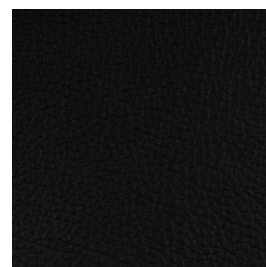
Grigio chiaro 854



Blu 856



Ardesia 859



Nero 860

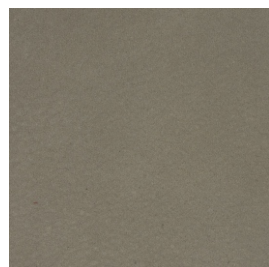
Složeni: 100% Kůže

KATEGORIE F



---

## Pelle Vintage Kat. F



Creta 1



Seppia 5



Camel 2



Marrone 7



Testa di Moro 3



Black 4

Složeni: 100% Kůže

---

Colori fili cuciture  
Barvy šicí nitě

Cod. 0587

Cod. 0133

Cod. 0209

Cod. 0128

Cod. 0338

Cod. 3286

Cod. 5017

Cod. 5054

Cod. 0856

Cod. 2851

Cod. 0020

Cod. 3426

Cod. 0877



Složeni: 100% PL

Hmotnost: 500 g/m



# MATERIÁL

---

**Kat.** Essenze  
Lamino



Nodato chiaro  
LGN-RNC



Nodato scuro  
LGN-RNS

---

**Kat.** Verniciati poro aperto  
Lak otevřené póry - dýha



Bianco gesso  
BS PA BG



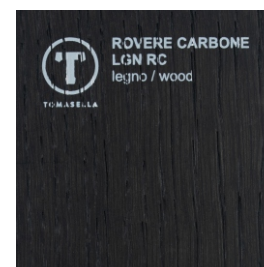
Madreperla  
BS OC MO



Frassino oriente  
LGN-FO



Rovere termocotto  
LGN-RT



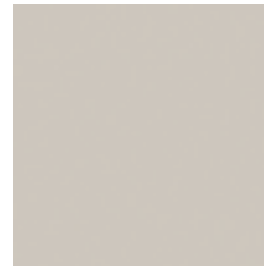
Rovere carbone  
LGN-RC

---

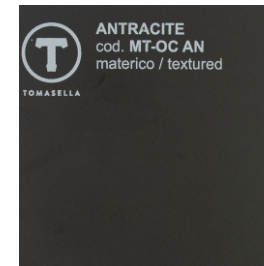
**Kat.** Materico opaco  
Matný materiál



Bianco gesso  
MT-OC BG



Madreperla  
MT-OC MP



Antracite  
MT-OC AN

## Kat. Materico



Cemento chiaro  
MT-CC



Cemento scuro  
MT-CS



Cemento cava  
MT-CV



Maya bronze  
MT-MB



Piasentina  
MT-PS



Graniglia  
MT-GR



Paglia grigio  
MT-PR



Paglia bronzo  
MT-PB



Intreccio scuro  
MT-INT S



Intreccio chiaro  
MT-INT C

---

**Kat.** HPL



HPL scuro



HPL chiaro



---

**Kat.** Finiture metallo  
Kovová povrchová úprava

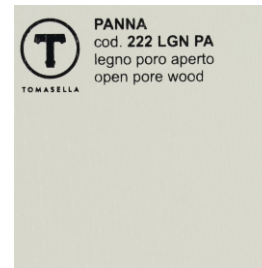


---

**Kat.** Laccato poro aperto  
Legno laccato poro aperto  
Lak otevřené pory



Bianco gesso  
221 PA



Panna 222 PA



Madreperla 224 PA



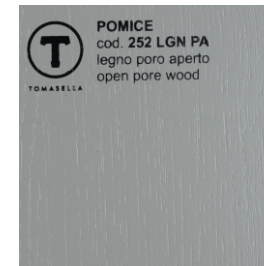
Hot 227 PA



Grigio Piacenza  
230 PA



Canapa 250 PA



Pomice 252 PA



Antracite 260 PA

**Kat.** Laccati opachi e lucidi  
Lak matný / lesklý



Bianco 121



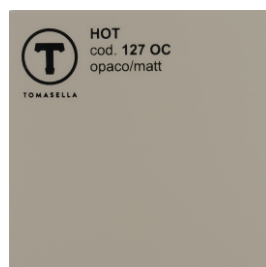
Panna 122



Avorio 123



Madreperla 123



Hot 127



Smoke 128



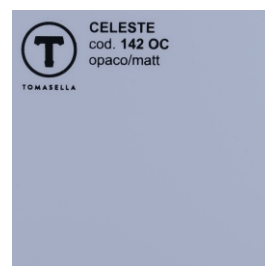
Grigio Piacenza 130



Nero Fumo 131



Rosso 134



Celeste 142



Pink 145



Oliva 147

---

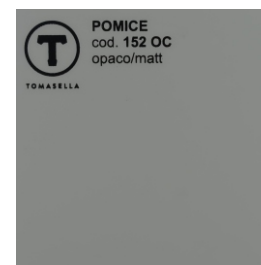
**Kat.** Laccati opachi e lucidi  
Lak matný / lesklý



Arancio 148



Canapa 150



Pomice 152



Verde muschio 153



Blu avio 154



Carta da zucchero 155



Bordeaux 156



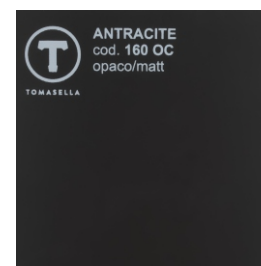
Pesca 157



Zafferano 158



Salvia 159



Antracite 160

**Kat.** Vetri lucidi / satinati colorati  
Sklo lesklé matné



Bianco gesso 421



Panna 422



Avorio 423



Madreperla 424



Hot 427



Smoke 428



Grigio Piacenza 430



Nero Fumo 431



Rosso 434



Celeste 442



Pink 445



Oliva 447

**Kat.** Vetri lucidi / satinati colorati  
Sklo lesklé matné



Arancio 448



Canapa 450



Pomice 452



Verde muschio 453



Blu avio 454



Carta da zucchero 455



Bordeaux 456



Pesca 457



Zafferano 458



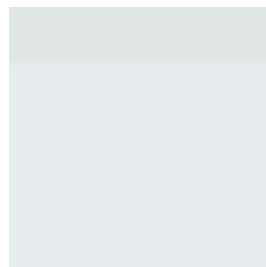
Salvia 459



Antracite 460

---

**Kat.** Vetri  
Sklo



Vetro trasparente  
320



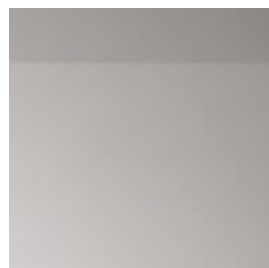
Vetro satinato 361



Vetro fumé 363

---

**Kat.** Specchi  
Zrcadlo



Specchio grigio 383



Specchio grigio  
satinato 393



Specchio argentato  
381



Specchio bronzato  
382



# ITALIER

[www.italier.cz](http://www.italier.cz) [info@italier.cz](mailto:info@italier.cz) +420 774 431 196