

# Masterpiece.

design Ferruccio Laviani



**LEA**  
CERAMICHE

# P R ( ) T E C T<sup>®</sup>

ANTIBATTERICO - ANTIMICROBIAL

Questa collezione è realizzata  
con l'esclusiva tecnologia antibatterica Protect<sup>®</sup>.

This collection is made with the exclusive  
antimicrobial Protect<sup>®</sup> technology.

with MICROBAN<sup>®</sup>

# Masterpiece.

<b>01</b>	<b>Introduction</b>	<b>03</b>
01a	Colors	06
<b>02</b>	<b>Abstract</b>	<b>08</b>
02a	Master Colors	10
02b	Piece Colors	12
02c	Mosaics	13
<b>03</b>	<b>Matching Proposals</b>	<b>16</b>
<b>04</b>	<b>The Collection</b>	<b>22</b>
<b>05</b>	<b>Info</b>	<b>66</b>
	Panariagroup	68
	Protect	70
	Safetouch	72
	Color range	74
	Sizes	78
	Item codes	80
	Technical characteristics	84
	Packing	85
	Certifications	86
	Intended uses	87
	Overview	88

**LEA**  
CERAMICHE

01.

Un'inesauribile  
fonte di creatività

An endless source  
of creativity

# Introduction.

Masterpiece nutre la creatività che genera capolavori. Con ben 10 tinte, punta in modo deciso sul colore. Ma non solo: le due anime di cui si compone traducono in sofisticate superfici ceramiche due estetiche iconiche come il cemento e il seminato veneziano.

Suggerimenti tanto fertili e duttili liberano la creatività di architetti e interior designer, alle prese con uno stimolante gioco combinatorio. Al pari delle sette note o delle lettere dell'alfabeto, un numero finito di elementi di base si rivela in grado di generare un'infinità di accostamenti possibili, che arrivano a coinvolgere numerosi altri materiali del catalogo Lea Ceramiche.

Come strumento di design, Masterpiece si rivela subito una collezione originale e ricercata, semplice da interpretare nonostante il suo inesauribile potenziale creativo. Le qualità tecniche del gres porcellanato ne fanno una superficie per l'interno e per l'esterno ricca di formati, resistente e inalterabile nel tempo, pratica e versatile, sana e sicura grazie alle proprietà antibatteriche PROTECT.

Masterpiece fuels the creativity that generates masterpieces. Featuring 10 different shades, it places a strong emphasis on colour. Though not exclusively: its two components translate two iconic aesthetics – concrete and Venetian seminato – into sophisticated ceramic surfaces.

These fertile and versatile effects unleash the creativity of architects and interior designers in a stimulating interplay of combinations. Like the seven notes or the letters of the alphabet, a finite number of base elements can be used to generate an infinite number of possible combinations, involving many other materials in the Lea Ceramiche catalogue.

As a design tool, Masterpiece immediately reveals itself as an original and sophisticated collection that is simple to interpret despite its inexhaustible creative potential. The technical qualities of porcelain stoneware make it a surface for indoor and outdoor use with a wide selection of formats: it is resistant, durable, practical, versatile, healthy and safe thanks to its PROTECT antibacterial properties.



Nato a Cremona nel 1960 e laureato in architettura al Politecnico di Milano, apre il suo studio di progettazione di interni, design, art direction e grafica proprio a Milano, nel 1991. Da allora è art director di Kartell, ruolo che negli anni ha ricoperto anche per altre importanti aziende del design, tra le quali Flos, De Padova, Foscarini, Moroso ed Emmemobili.

Progetta spazi commerciali e allestimenti espositivi, residenze per privati e uffici per aziende come Cassina, Dolce & Gabbana, Dada - Molteni & C., Swarovski, Citroën, Hansgrohe, Veuve Clicquot, Samsung, Zara, Zuhair Murad. Disegna inoltre mobili e lampade per le più prestigiose aziende del design. Suoi prodotti, spesso selezionati per collettive internazionali, fanno parte delle collezioni permanenti dei principali musei del design.

Tra gli allestimenti più recenti, il nuovo concept del museo Kartell di Noviglio (2015); le sfilate Alta Moda Donna di Dolce & Gabbana di Milano e Palermo (2017); le mostre "The Art side of Kartell", allestita presso Palazzo Reale a Milano, e "KartellLand - Celebrating 70 years of Italian Design History", allestita presso l'International Art Design Center di Shenzhen (2019).

Born in Cremona in 1960, Laviani graduated in architecture from the Polytechnic University of Milan, opening his own interior design, design, art direction and graphics studio in Milan in 1991. He has subsequently served as art director at Kartell, a role he has also held over the years for other major design companies, including Flos, De Padova, Foscarini, Moroso and Emmemobili.

He designs commercial spaces and exhibition stands, residences for private individuals and offices for companies such as Cassina, Dolce & Gabbana, Dada - Molteni & C., Swarovski, Citroën, Hansgrohe, Veuve Clicquot, Samsung, Zara and Zuhair Murad. He also designs furniture and lamps for the most prestigious design companies. His products, which are often selected for international group shows, are part of the permanent collections of the major design museums.

His recent projects include the new concept of the Kartell museum in Noviglio (2015); Dolce & Gabbana's Alta Moda Donna fashion shows in Milan and Palermo (2017); the "The Art side of Kartell" exhibitions held at Palazzo Reale (Royal Palace) in Milan, and "KartellLand - Celebrating 70 years of Italian Design History" at the International Art Design Center in Shenzhen (2019).



**Ferruccio Laviani firma Masterpiece, una collezione ceramica che dalla combinazione di un certo numero di elementi finiti arriva a sviluppare accostamenti infiniti: un alfabeto cromatico e materico variamente modulabile che per qualità estetica, distintività e creatività risulta sempre all'altezza della visione del progettista. Prosegue così una collaborazione che ha già visto l'architetto milanese interpretare le superfici ceramiche di Lea Ceramiche all'interno di allestimenti visionari e scenografici ma pur sempre intuitivi e immediati.**

“Colore e materia sono alla base del mio lavoro – afferma Ferruccio Laviani - ed ogni volta trovo eccitante avventurarmi in nuovi progetti e ricerche. Masterpiece è il perfetto equilibrio tra due elementi: Master, appunto, dal colore uniforme e materico che con l'aggiunta di una graniglia omogenea si trasforma in Piece, un 'terrazzo' dal pattern sottile e discreto, declinato in varie nuances di colore.

Una superficie architettonica per interno ed esterno che, oltre ad avere un carattere proprio, può combinarsi a materiali e finiture di altre collezioni Lea Ceramiche conferendo un'identità unica e personale ad ogni singolo progetto.”

*Ferruccio Laviani*

**Ferruccio Laviani designed Masterpiece, a ceramic collection that combines a number of finished elements to create infinite combinations: a chromatic and material alphabet that can be modulated in various ways and whose aesthetic quality, distinctiveness and creativity always live up to the designer's vision. The collection continues a collaboration in which the Milanese architect has already interpreted Lea Ceramiche's ceramic surfaces in visionary and striking installations that are both intuitive and immediate.**

“Colour and material are the basis of my work,” comments Ferruccio Laviani, “and I always find it exciting to venture into new projects and research. Masterpiece is the perfect balance between two elements: Master, with its uniform and textured colour, which, with the addition of a homogeneous grit, is transformed into Piece, a 'terrazzo' with a subtle and discreet pattern in various colour shades.

An architectural surface for indoors and outdoors which, in addition to having its own character, can be combined with materials and finishes from other Lea Ceramiche collections, lending a unique and personal identity to each individual project.”

**MASTERPIECE**

Due materie e due estetiche si incontrano, innescando un'esplosione di creatività destinata a ispirare capolavori di interior design.

**PIECE**

Ispirato al seminato veneziano, non si limita a reinterpretare i colori di Master ma ne propone di nuovi, arricchiti da scaglie di materia che ne attraversano lo spessore.

**MASTER**

Prende a modello un cemento fatto a mano e costellato da micro inclusioni di materiale inerte. Per questo ogni colore presenta un variegato ventaglio di nuance.

**10 COLORI**

Un'estesa gamma cromatica che include tinte neutre e colori nuovi e di tendenza dell'interior italiano, per interpretare con carattere progetti dallo stile molto personale.

**/ MASTERPIECE**

Two materials and two aesthetics collide, triggering an explosion of creativity destined to inspire masterpieces of interior design.

**/ PIECE**

Inspired by Venetian seminato, it not only reinterprets Master's colours, but it also offers new shades enriched with flakes of material that run throughout the thickness.

**/ MASTER**

It is modelled on handmade concrete dotted with micro-inclusions of inert material. This is why each colour has a varied range of shades.

**/ 10 COLOURS**

An extensive colour range including neutral shades and new, trendy Italian interior colours to interpret projects with character and a very personal style.

**NUOVO FORMATO 120x120 cm**

Masterpiece introduce nel catalogo Lea Ceramiche un nuovo, imponente formato di gres porcellanato che ridefinisce le proporzioni delle pavimentazioni ed esalta la continuità della materia.

**DESIGN FERRUCCIO LAVIANI**

All'origine della collezione c'è l'approfondito studio della materia e delle cromie: il suo design accurato semplifica gli abbinamenti interni che l'accostamento con altri materiali. Una superficie architettonica di una grande firma a disposizione di tutti.

**INDOOR+OUTDOOR**

La finitura superficiale Grip e la versione in gres porcellanato L2, specifiche per l'outdoor, permettono un'assoluta continuità estetica tra pavimenti interni ed esterni.

**ESCLUSIVA TECNOLOGIA ANTIBATTERICA**

Superfici sane, sicure e protette perché la tecnologia antibatterica integrata PROTECT elimina fino al 99,9% dei batteri.

**/ NEW FORMAT 120x120 cm**

Masterpiece introduces a new, impressive porcelain stoneware format to the Lea Ceramiche catalogue, redefining the floors' proportions and enhancing the material's continuity.

**/ FERRUCCIO LAVIANI DESIGN**

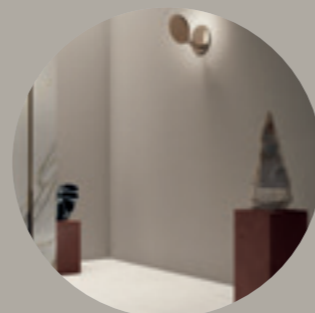
An in-depth study of materials and colours lies at the heart of the collection: its precise design simplifies interior combinations and matching with other materials. An architectural surface conceived by a famous designer available to everyone.

**/ INDOOR+OUTDOOR**

The Grip surface finish and the L2 porcelain stoneware version, specifically designed for outdoor use, permit total aesthetic continuity between indoor and outdoor floors.

**/ EXCLUSIVE ANTIBACTERIAL TECHNOLOGY**

Healthy, safe and protected surfaces, because the integrated PROTECT antibacterial technology eliminates up to 99.9% of bacteria.



# 02a.



## Colori Gres / Stoneware Colors

01 Master White  
02 Master Sand  
03 Master Brown  
04 Master Coal  
05 Master Gray

## Materiali / Materials Gres porcellanato / Porcelain stoneware

9mm

## Finiture / Finishes

Nat  
Grip

## Formati / Sizes

120x120cm 48"x48"  
60x120cm 24"x48"  
60x60cm 24"x24"  
30x60cm 12"x24"

\* Escluso Master Brown - Except Master Brown

Master conserva il carattere risoluto del cemento steso a mano, nel quale risultano leggibili i micro inerti tenuti insieme dalla malta legante. Una superficie mossa e variegata che modula ognuno dei 5 colori generando un'armonica gamma di toni.



## Colori L2 / L2 Colors

01 Master White  
02 Master Sand  
04 Master Coal  
05 Master Gray

## Materiali / Materials Gres spessorato L2 / Extra thick porcelain stoneware L2

20mm

## Finitura / Finish

Grip L2

## Formato / Size

60x120cm 24"x48"

Master retains the assertive character of hand-laid concrete, in which the micro aggregates held together by the binding mortar are clearly visible. A lively and varied surface that modulates each of the 5 colours to create a harmonious range of tones.

# Master colors.



# 02b.



Colori Gres /  
Stoneware Colors

- 01 Piece Light
- 02 Piece Alpi
- 03 Piece Siena
- 04 Piece Moka
- 05 Piece Dark

Materiali / Materials  
Gres porcellanato /  
Porcelain stoneware  
9mm

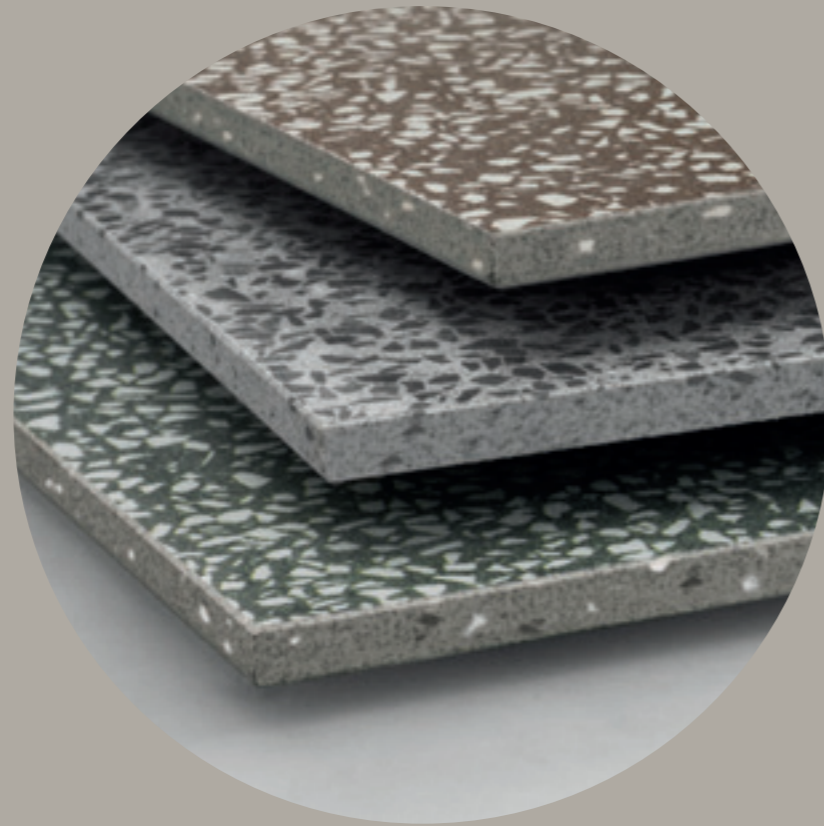
Finitura / Finish  
Nat

Formati / Sizes

120x120cm	48"x48"
60x120cm	24"x48"
60x60cm	24"x24"
30x60cm	12"x24"

Chiara omaggio alle storiche pavimentazioni veneziane, Piece calibra in modo originale i toni cromatici dei fondi e quello del seminato. L'impasto è arricchito da scaglie di materia, ben visibili in costa, che attraversano lo spessore della piastrella.

A clear homage to historic Venetian flooring, Piece offers an original balance between the chromatic tones of the base tiles and that of the seminato. The body mix is enriched with material flakes, which are clearly visible on the edge and which run throughout the thickness of the tile.



# Piece colors.





# 02c.



Mosaici / Mosaics

01. Mosaico 36 Master  
02. Mosaico Chip Piece

Materiale / Material  
Gres porcellanato /  
Porcelain stoneware

9mm

Formati / Sizes

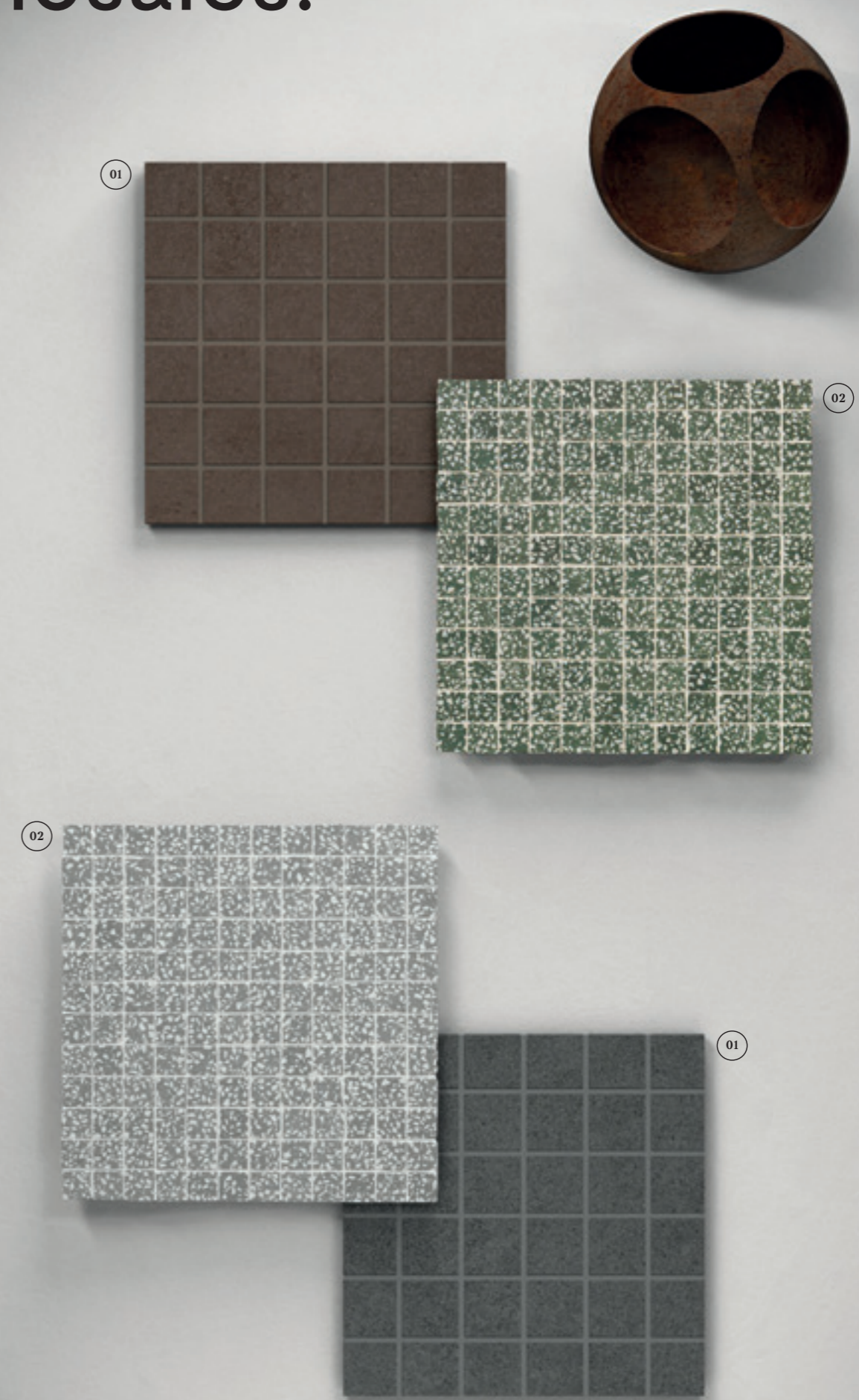
Mosaico 36  
30x30 cm    12"x12"

Mosaico Chip  
30x30 cm    12"x12"

Al classico mosaico da 36 tessere rettificate sulla superficie Master se ne aggiunge uno da 144 caratterizzato dai bordi burattati sulla superficie Piece, la cui leggera irregolarità spezza la rigida ortogonalità della griglia di posa conferendole un accenno di movimento.

The classic mosaic of 36 rectified tiles on the Master surface is combined with a 144-tile mosaic on the Piece surface featuring barrelled edges, whose slight irregularity breaks up the rigid squareness of the laying grid and gives it a sense of movement.

# Mosaics.

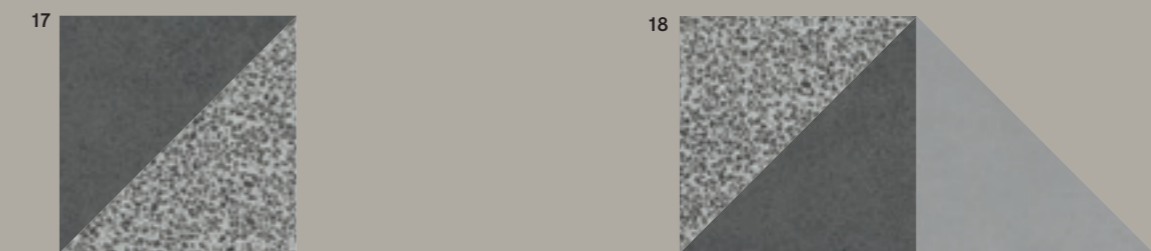
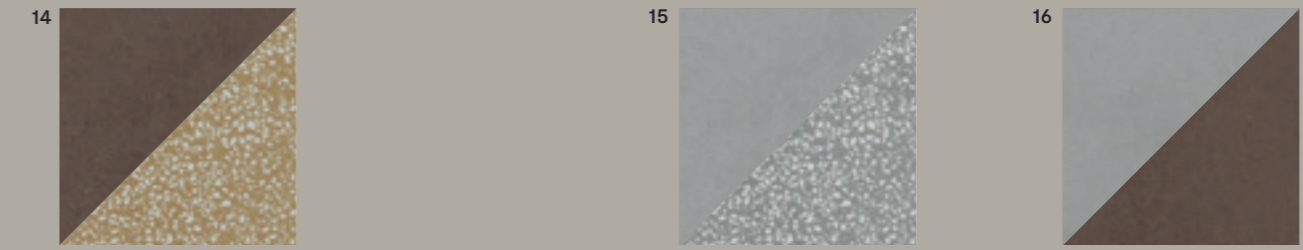
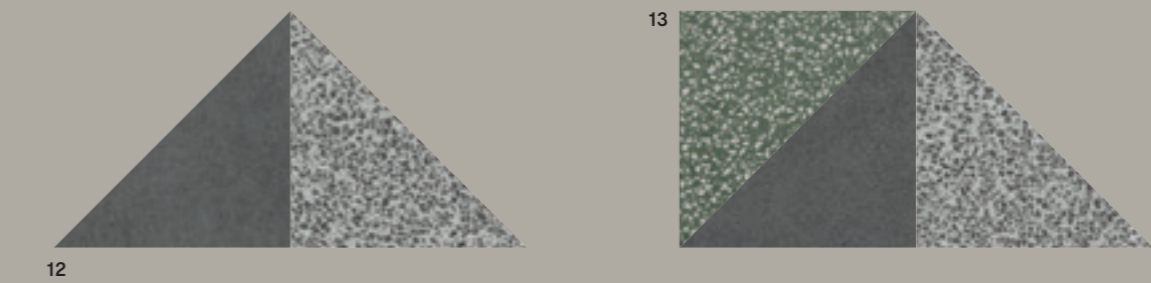
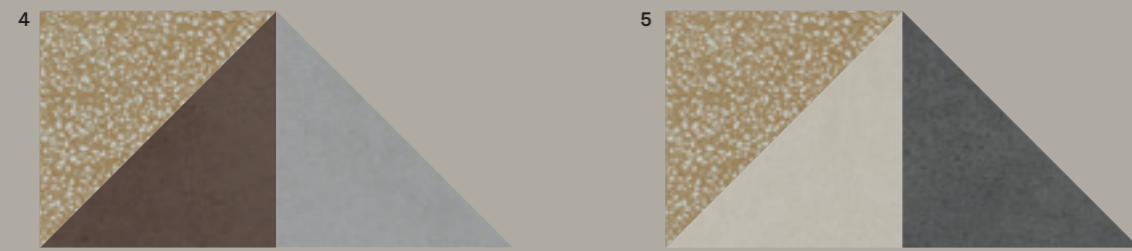
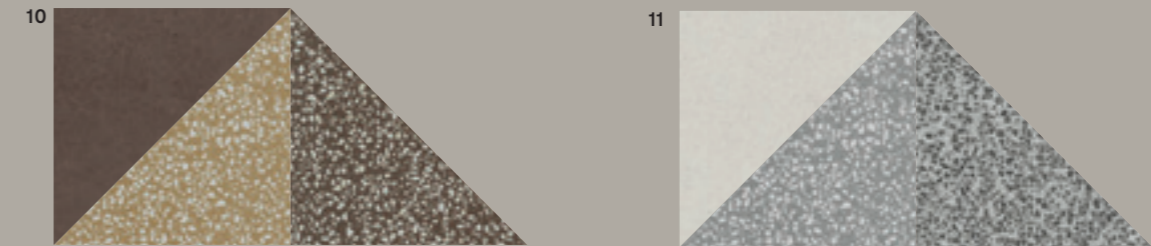
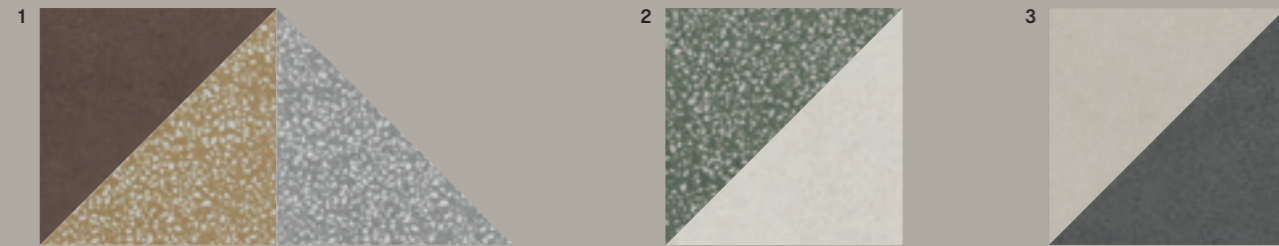


# 03. Matching proposals.

# Masterpiece matching.

Nel definire l'identità delle due superfici e nella composizione della palette colori, Ferruccio Laviani ha esplorato alcuni tra i tanti abbinamenti possibili: pure suggestioni che lasciano intuire le enormi potenzialità estetiche di Masterpiece.

In defining the identity of the two surfaces and in composing the colour palette, Ferruccio Laviani has explored some of the many possible combinations: pure inspirations that hint at Masterpiece's enormous aesthetic potential.



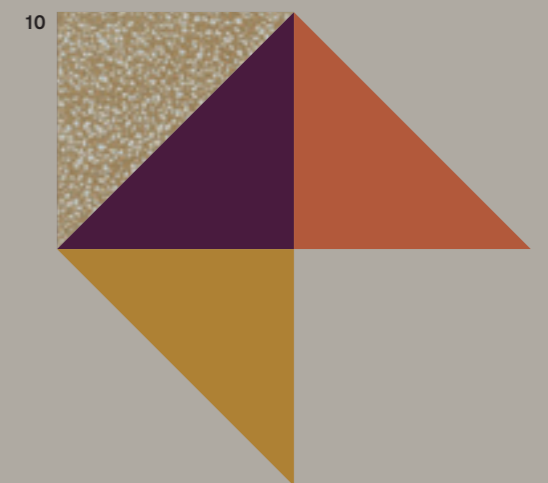
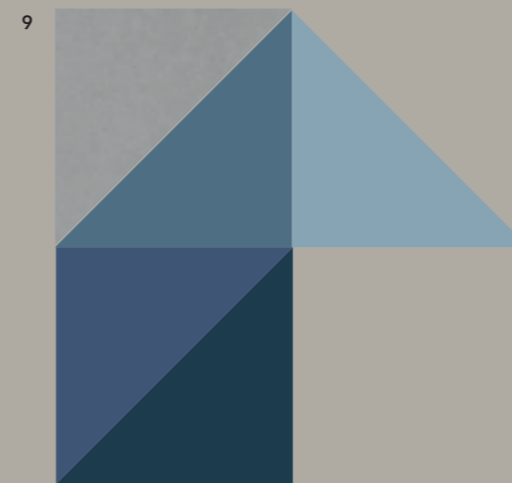
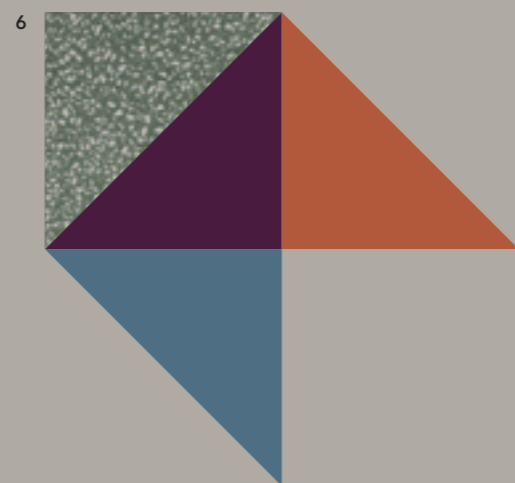
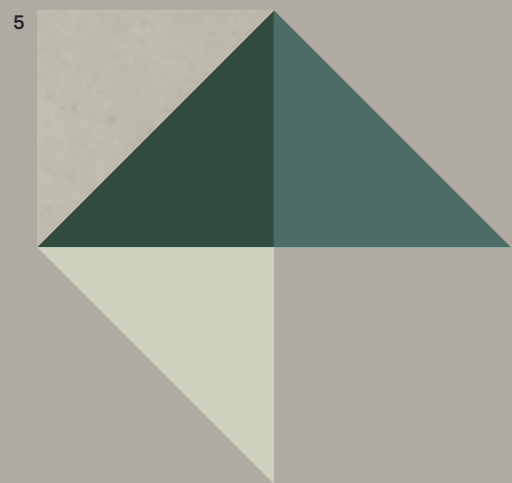
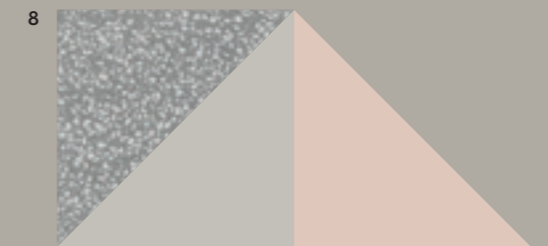
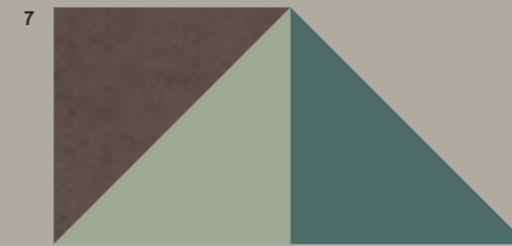
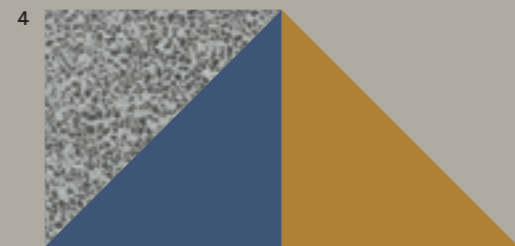
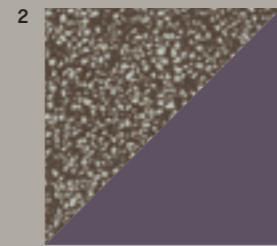
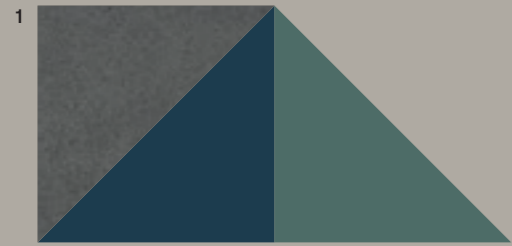
- 1. Master Brown, Piece Siena, Piece Light
- 2. Piece Alpi, Master White
- 3. Master Sand, Master Coal
- 4. Piece Siena, Master Brown, Master Gray
- 5. Piece Siena, Master White, Master Coal
- 6. Master Brown, Piece Moka

- 7. Master Coal, Piece Dark, Piece Siena
- 8. Master White, Master Brown
- 9. Master White, Piece Moka

- 10. Master Brown, Piece Siena, Piece Moka
- 11. Master White, Piece Light, Piece Dark
- 12. Master Coal, Piece Dark
- 13. Piece Alpi, Master Coal, Piece Dark
- 14. Master Brown, Piece Siena
- 15. Master Gray, Piece Light

- 16. Mastre Gray, Master Brown
- 17. Master Coal, Piece Dark
- 18. Piece Dark, Master Coal, Master Gray

## 03a. Matching proposals.



1. Master Coal, NCS 6010-B90G, NCS 7020-B10G  
2. Piece Moka, NCS 7010-R30B  
3. Master White, NCS 7010-R30B, NCS 4005-Y20R  
4. Piece Dark, NCS 4020-R90B, NCS 3560-Y20R

5. Master Sand, NCS 7010-G10Y, NCS 6010-B90G, NCS 0505-G30Y  
6. Piece Alpi, NCS 6030-R20B, NCS 3060-Y70R, NCS 4020-R90B

7. Master Brown, NCS 2010-G60Y, NCS 6010-B90G  
8. Piece Light, NCS 1502-Y50R, NCS 0907-Y70R

9. Master Gray, NCS 6020-R80B, NCS 4020-R90B, NCS 2010-B, NCS 1510-B50G  
10. Piece Siena, NCS 6030-R20B, NCS 3060-Y70R, NCS 3560-Y20R

# Masterpiece and Colors.

La palette della collezione genera uno spazio cromatico all'interno del quale è semplice anche fare un uso sofisticato del colore di arredi, complementi, tessuti e tinte murali.

The collection's palette generates a colour space within which it is also easy to make sophisticated use of the colour of furniture, accessories, fabrics and wall shades.

# 03b. Matching proposals.

# Masterpiece and Collections.

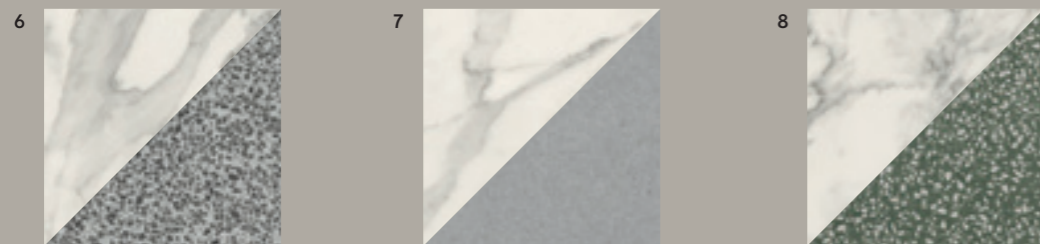
I 10 colori che compongono la collezione si prestano a un'infinità di accostamenti con altri look ceramici, dal marmo al legno, dalla pietra al cemento, dimostrando un'ampia abbinabilità interna al catalogo Lea Ceramiche.

The 10 colours that make up the collection are suitable for an infinite number of combinations with other ceramic looks, from marble to wood, from stone to concrete, demonstrating a wide range of combinations within the Lea Ceramiche catalogue.

## Masterpiece and Anthology.



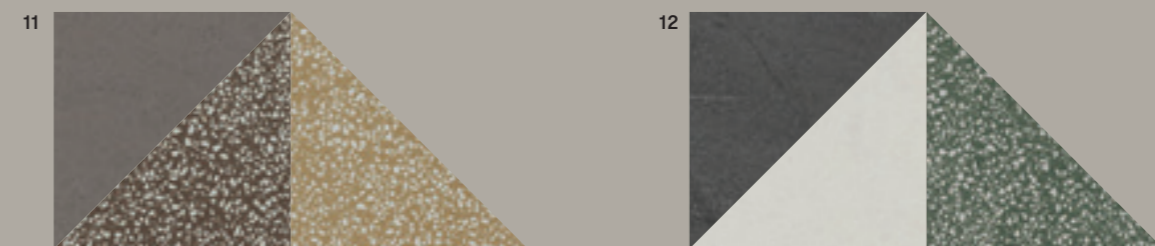
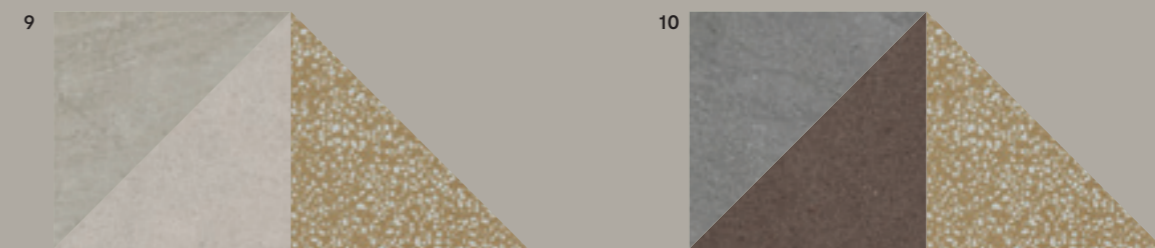
## Masterpiece and Synesthesia.



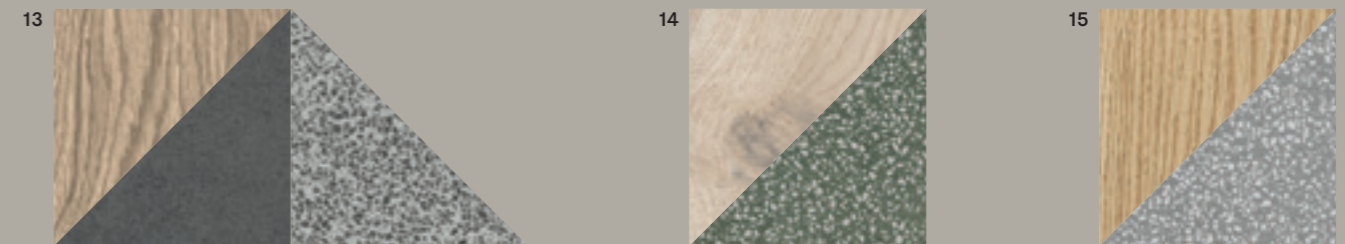
- 1. Master White, Anthology 05 Dark
- 2. Master Coal, Anthology 01 White
- 3. Master Brown, Anthology 03 Earth
- 4. Synesthesia Golden Borg, Master Sand, Piece Siena
- 5. Master Coal, Synesthesia Gray Marble

- 6. Synesthesia Pure Statuario, Piece Dark
- 7. Synesthesia Pure Statuario, Master Gray
- 8. Synesthesia Pure Statuario, Piece Alpi

## Masterpiece and Nextone.



## Masterpiece and Bio Select.



- 9. Nextone White, Master Sand, Piece Siena
- 10. Nextone Gray, Master Brown, Piece Siena
- 11. Nextone Taupe, Piece Moka, Piece Siena
- 12. Nextone Dark, Master White, Piece Dark

- 13. Bio Select Ginger, Master Coal, Piece Dark
- 14. Bio Select Vanilla, Piece Alpi
- 15. Bio Select Natural, Piece Light

04.

# The Collection.



# 04d.

Master riproduce un cemento a grana grossa mosso e variegato, ricco di sfumature che attenuano l'uniformità tipica delle gettate di cemento: i colori e le numerose grafiche disponibili rafforzano l'unicità di ogni progetto di interior design.

Master reproduces a wavy and variegated coarse-grained concrete with a multitude of shades that soften the typical uniformity of concrete castings: the colours and the numerous available graphic effects enhance the uniqueness of each interior design project.

# Kitchen.

Master Sand, Piece Dark,  
Piece Siena.

Master Sand 120x120





Dal 30x60 cm al nuovo,  
imponente 120x120 cm,  
Masterpiece offre un corredo di  
formati capace di rispondere a  
ogni esigenza progettuale, sia a  
pavimento che a rivestimento.

From 30x60 cm to the  
new, impressive 120x120 cm  
format, Masterpiece offers a  
range of formats able to meet  
all design requirements, both  
for floors and walls.

WALL  
Piece Siena 30x60

FLOOR  
Piece Dark 120x120



Piece Dark



FLOOR  
Master Sand 120x120

WALL  
Piece Siena 60x120



WALL  
Piece Dark 60x120

FLOOR  
Master Sand 60x60

04e.

# Restaurant.

Piece Alpi, Master Coal,  
Master Gray, Master White.

FLOOR  
Piece Alpi 120x120

WALL  
Synesthesia - Pure Statuario 120x278





Piece Alpi presenta un fondo di un intenso color verde, reso arioso e vivace dalle scaglie bianche che lo punteggiano diffusamente. Un colore nuovo e audace che trova nei due grigi di Master un perfetto contrappunto cromatico. Le superfici in gres porcellanato sono pratiche e resistenti, destinate a durare e sempre facili da pulire. In più, grazie alla tecnologia antibatterica PROTECT, sono sane e sicure anche dal punto di vista igienico.

Piece Alpi has a deep green background made airy and lively by the white flakes dotted throughout. A new and bold colour that is perfectly counterbalanced by Master's two greys. Porcelain stoneware surfaces are practical and durable, designed to last and always easy to clean. Moreover, thanks to PROTECT antibacterial technology, they are also healthy and safe from a hygiene standpoint.

WALL  
Master Coal 120x120

FLOOR  
Piece Alpi 120x120



WALL  
Master Gray 120x120

FLOOR  
Master Coal 120x120

WALL  
Pisce Alpi 120x120

FLOOR  
Master White 120x120



# 04f.

Masterpiece asseconda la logica del progetto architettonico con due estetiche iconiche e sorprendentemente facili da abbinare, tra loro e con altri look ceramici. Ciascuna si esprime attraverso un'estesa gamma di colori e di formati, due spessori e una finitura (Grip) dedicata all'outdoor.

Masterpiece embraces the logic of architectural design with two iconic aesthetics that are surprisingly easy to combine, both with each other and with other ceramic looks. Each one of them is expressed through an extensive range of colours and formats, two thicknesses and a finish (Grip) for outdoor use.

WALL  
Synesthesia - Golden Borg 120x278

FLOOR  
Master Sand 120x120

## Museum.

Master Sand, Master Coal, Piece Moka, Master Brown.





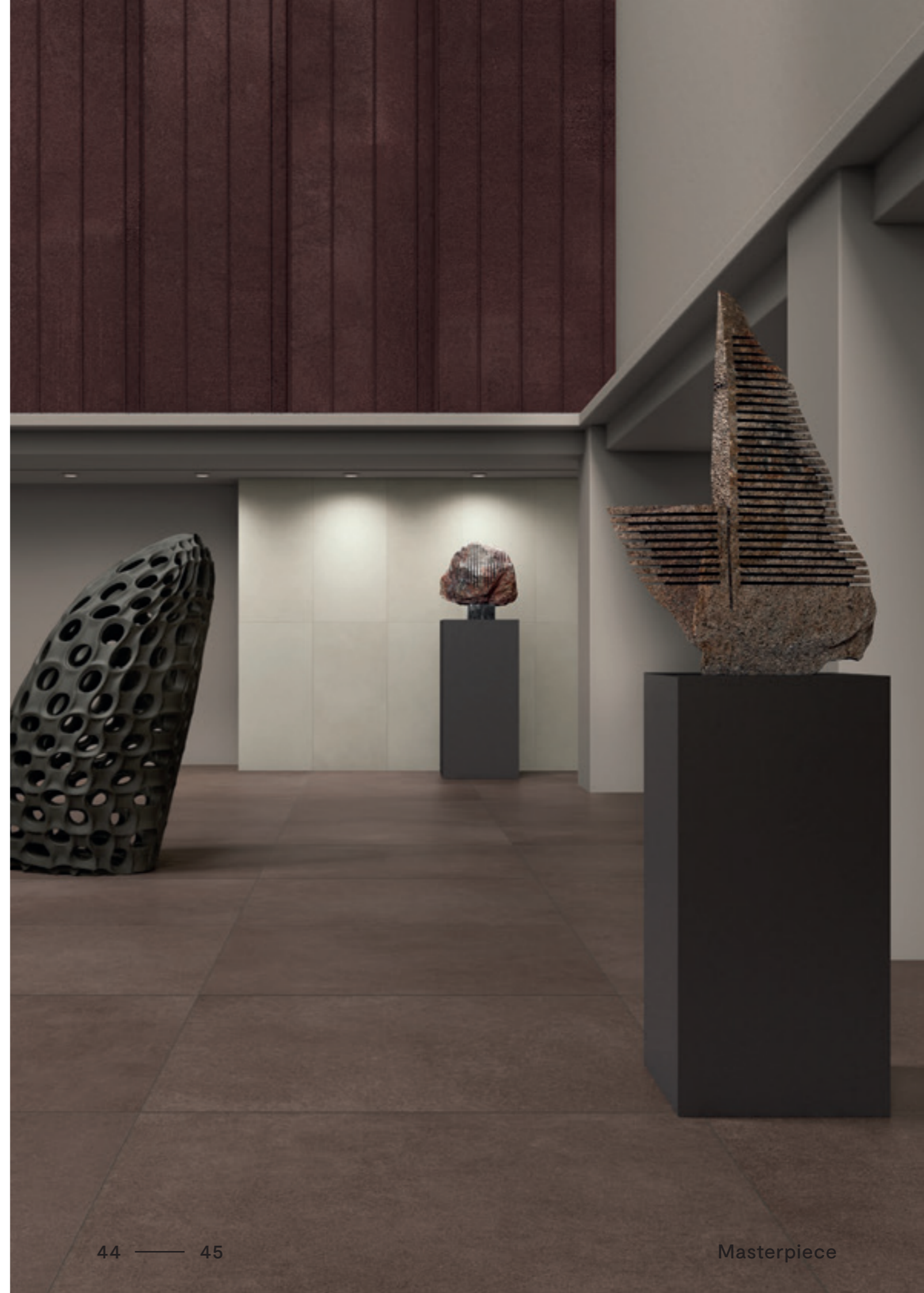
WALL  
Piece Moka 60x120

FLOOR  
Master Coal Grip, L2 60x120

Piece Moka e Master Brown sono tinte inedite per il catalogo Lea Ceramiche. Intense e calde, eleganti e attualissime: generano uno spazio cromatico fertile di accostamenti raffinati e discreti.

Piece Moka and Master Brown are new colours for the Lea Ceramiche catalogue. Intense, warm, elegant and highly contemporary, they generate a fertile colour space of refined and discreet combinations.

FLOOR  
Master Brown 120x120





WALL  
Pisces Moka 120x120

FLOOR  
Master Brown 120x120



# 04g.

I 5 colori Piece non si limitano a reinterpretare dal punto di vista della texture grafica i 5 colori Master ma si aggiungono ad essi, raddoppiando il potenziale creativo. Masterpiece conta dunque ben 10 tinte, ora più neutre e trasversali, ora più originali e di tendenza.

The 5 Piece colours not only reinterpret the graphic texture of the 5 Master colours, but they also add themselves to them, doubling their creative potential. Masterpiece, therefore, has 10 colours, some more neutral and versatile, others more original and trendy.

## Loft.

Master White, Piece Siena,  
Master Gray, Master Brown.

WALL  
Master White 60x120

FLOOR  
Master White 60x60



Il catalogo Lea Ceramiche si amplia a colori inediti che, a pavimento e a rivestimento, moltiplicano le possibilità espressive della ceramica. Tra essi, Piece Siena, un giallo ocra caldo e accogliente, luminoso grazie alla fitta puntinatura bianca del seminato.

The Lea Ceramiche catalogue has expanded to include new colours that multiply the expressive potential of ceramic for floors and walls. These include Piece Siena, a warm and welcoming yellow ochre that is luminous thanks to the dense white speckles of the seminato.

WALL  
Piece Siena 30x60 - 60x120

FLOOR  
Master White 120x120

FLOOR  
Master Gray 120x120

WALL  
Pieve Siena 60x120



Master White





WALL  
Master Brown 60x120

FLOOR  
Master Gray 120x120



L'alto numero di grafiche che caratterizza i cinque colori Master genera superfici effetto cemento uniche e irripetibili, con un disegno mosso e un variegato ventaglio di sfumature.

The high number of graphic effects that characterise the five Master colours generates unique and inimitable concrete-effect surfaces with a wavy pattern and a varied range of shades.

FLOOR  
Master Gray 120x120  
Master Brown 120x120

# 04h.

Il nuovo formato 120x120 cm riduce notevolmente il numero delle fughe e rende protagonista la materia ceramica e gli straordinari dettagli grafici e cromatici della sua superficie.

The new 120x120 cm format considerably reduces the number of joints and highlights the ceramic material and the extraordinary graphic and chromatic details on its surface.

# Home.

Piece Light, Piece Dark,  
Master Coal, Master Gray.





Lo studio delle texture e delle cromie all'origine della collezione incoraggia accostamenti che, all'interno del catalogo Lea Ceramiche, spaziano dall'effetto legno al look marmo, passando per numerose altre suggestioni materiche e cromatiche.

The study of textures and colours underlying the collection encourages combinations which, within the Lea Ceramiche catalogue, range from a wood effect to a marble look, as well as numerous other material and colour effects.

WALL  
Bio Select Cinnamon 20x120

FLOOR  
Piece Dark 60x60





WALL  
Piece Light 60x120

FLOOR  
Master Coal 120x120



WALL  
Piece Dark 60x120

FLOOR  
Master Gray 120x120



Master Gray

05.

Info.



FLOOR  
Master Coal 120x120

WALL  
Master Gray 120x120

## LA CERAMICA. UNA SCELTA SICURA.

CERAMICS. A SAFE CHOICE.

# Panariagroup. La ceramica nella sua forma migliore.

Ceramics at their best

La ceramica è un materiale dalle prestazioni uniche e straordinarie.  
Ceramics offer unique and outstanding performance.

**SICURA**  
SAFE

**RESISTENTE**  
RESISTANT

**IGIENICA**  
HYGIENIC

**VERSATILE**  
VERSATILE

**DURA A LUNGO**  
LONG-LASTING

**STABILE**  
STABLE

**NON EMETTE SOSTANZE CHIMICHE NOCIVE**  
ZERO VOCs

**RICICLABILE**  
RECYCLABLE

**NON BRUCIA**  
IT DOES NOT BURN

**AMA L'AMBIENTE**  
ENVIRONMENT-FRIENDLY

Panariagroup si distingue con prodotti di qualità superiore.  
Panariagroup stands out for its superior quality products.

### PIÙ SALUBRI

Grazie all'integrazione della tecnologia antibatterica Protect.

### HEALTHIER

Thanks to the integrated Protect antimicrobial technology.

### PIÙ VERSATILI E ADATTI AD OGNI IMPIEGO

Grazie ad un'ampia disponibilità di tecnologie e componenti ad elevata performance che consentono di ottenere prodotti adatti a destinazioni d'uso differenti.

### MORE VERSATILE AND SUITABLE FOR EVERY USE

Thanks to the wide availability of high-performance technologies and components that allow you to obtain products suitable for different uses.

### PIÙ FACILI DA PULIRE

Grazie alle nostre esclusive tecniche di lavorazione delle superfici.

### EASIER TO CLEAN

Thanks to our exclusive surface processing techniques.

### PIÙ SOSTENIBILI

Grazie a un processo produttivo estremamente efficiente in termini di rispetto delle norme ambientali, del consumo di acqua, energia e materie prime.

### MORE SUSTAINABLE

Thanks to a production process that is extremely efficient in terms of compliance with environmental standards and consumption of water, energy and raw materials.



# P R ( ) T E C T ®

## Per un abitare sano, sicuro e protetto.

Pavimenti e rivestimenti antibatterici ad altissime performance.

**TO LIVE HEALTHILY, SAFE AND SECURE.**

Antimicrobial floor and wall coverings with the highest performance.



**1. AZIONE POTENTE.**

Elimina i batteri e ne impedisce la proliferazione.

**POWERFUL ACTION.**

Eliminates microbes and prevents their reproduction.



**2. PROTEZIONE CONTINUA.**

Sempre attivo, 24 ore su 24, con e senza luce solare.

**CONTINUOUS PROTECTION.**

Always active, 24 hours a day, with and without sunlight.



**3. EFFICACIA ETERNA.**

Grazie alla tecnologia integrata in modo permanente nel prodotto.

**ETERNAL EFFECTIVENESS.**

Thanks to the technology permanently integrated into the product.



with MICROBAN®



# Safetouch

Soft and safe surfaces

Nat

## Superfici ceramiche più lisce e gradevoli al tatto, con elevati standard di resistenza allo scivolamento.

Smoother ceramic surfaces that are more pleasing to the touch, with high standards of slip resistance.



### 1. MORBIDA AL TATTO E RUVIDITÀ MINIMA.

Soft to the touch and smoother.



### 2. RESISTENZA ALLO SCIVOLAMENTO GARANTITA. - R10

Guaranteed slip resistance. - R10



### 3. IGIENICA E FACILE DA PULIRE.

Hygienic and easy to clean.

La natura di questa superficie, che unisce incredibile versatilità, estetica e performance, la rende perfetta per le destinazioni d'uso indoor più disparate, che si tratti di spazi residenziali o pubblici. Perché Safetouch ha caratteristiche inedite e altamente performanti.

La speciale materia utilizzata si compone di microgranuli di origine vetrosa. Grazie alla ridottissima granulometria delle particelle, la superficie risultante è priva delle marcate asperità che caratterizzano le superfici antiscivolo tradizionali R10 e che ne esasperano la ruvidità, riducendone la morbidezza tattile e complicando pulizia e manutenzione. Tuttavia, a livello micro e non percepibile al tatto, la superficie mantiene delle irregolarità che la rendono efficace nel proteggere l'utilizzatore dallo scivolamento.

La tecnologia Safetouch è incorporata nel processo produttivo del materiale ceramico e rimane efficace per tutta la vita del prodotto. Inoltre, le sue caratteristiche peculiari non vanno in alcun modo ad intaccare la resa estetica del prodotto, che mantiene i più alti standard estetici e di cura del dettaglio.

The nature of this surface, which combines incredible versatility, aesthetics and performance, makes it perfect for a wide variety of indoor uses, whether residential or public.

Because Safetouch has unprecedented, high performance features.

The special material used to make it consists of vitreous microgranules. Thanks to the very small particle size, the resulting surface lacks the distinct roughness characteristic of traditional non-slip surfaces R10, which exacerbates their roughness, reducing their tactile softness and complicating cleaning and maintenance.

However, at a micro level that is not perceptible to the touch, the surface retains irregularities that effectively protect users from slipping.

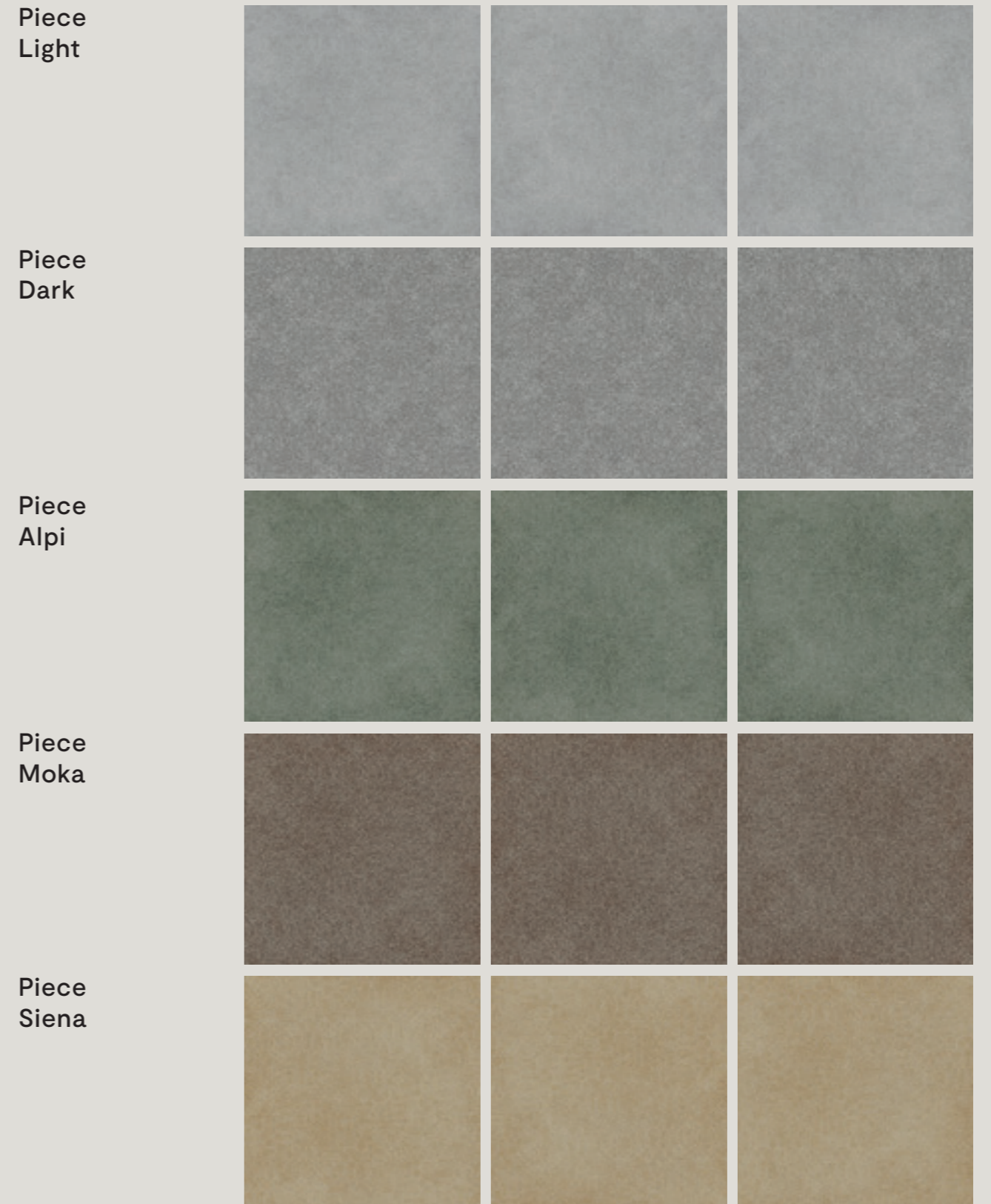
Safetouch technology is incorporated into the production process used to create the ceramic material and remains effective throughout the product's life. Moreover, its special properties do not in any way diminish the aesthetic performance of the product, which maintains the highest aesthetic standards and attention to detail.



MASTER - SHADE VARIATION



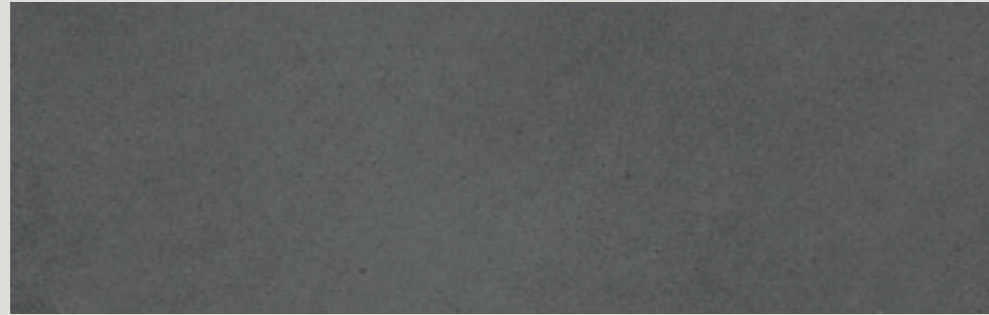
PIECE - SHADE VARIATION



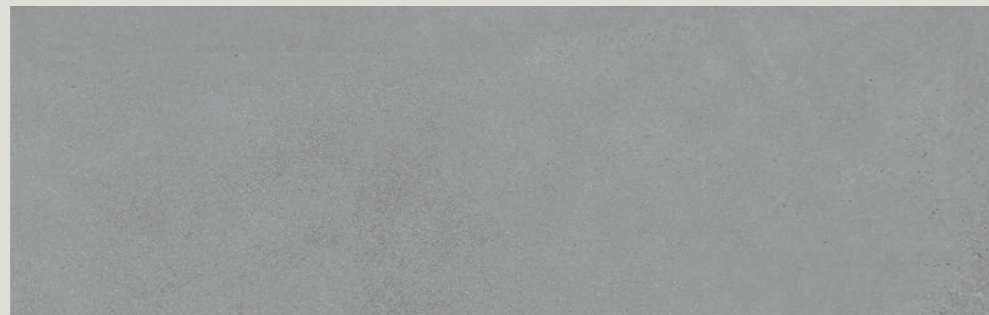
MASTER - DETAIL ZOOM



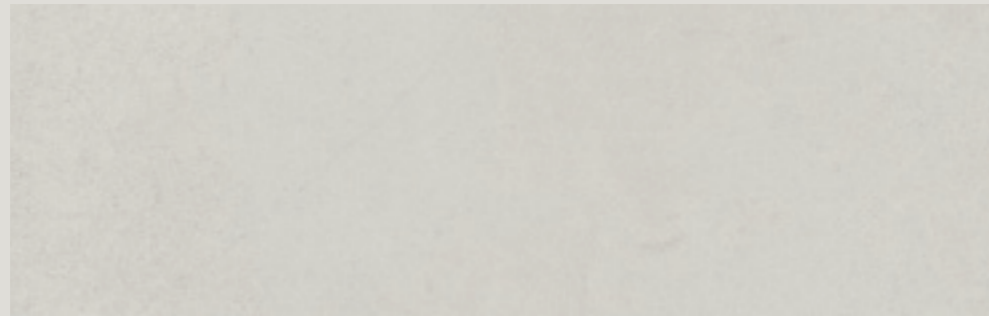
Master  
Coal



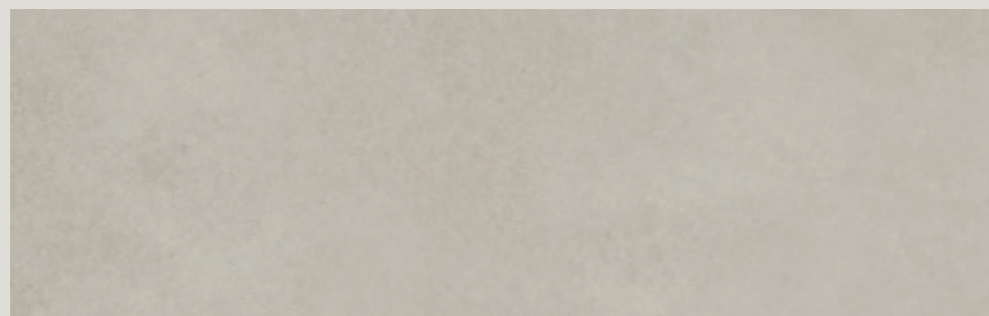
Master  
Gray



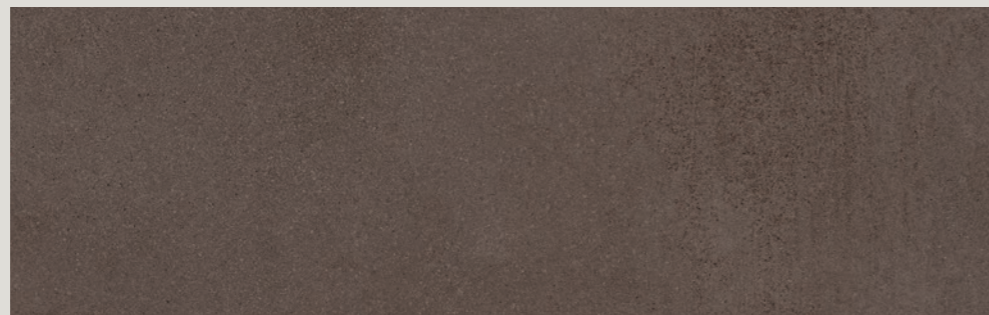
Master  
White



Master  
Sand



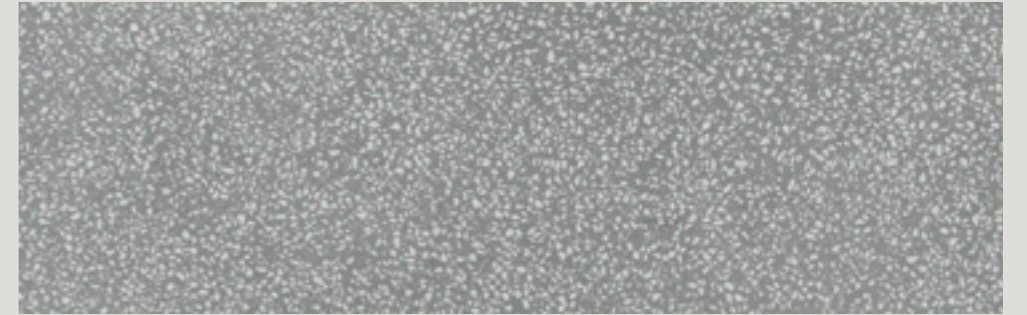
Master  
Brown



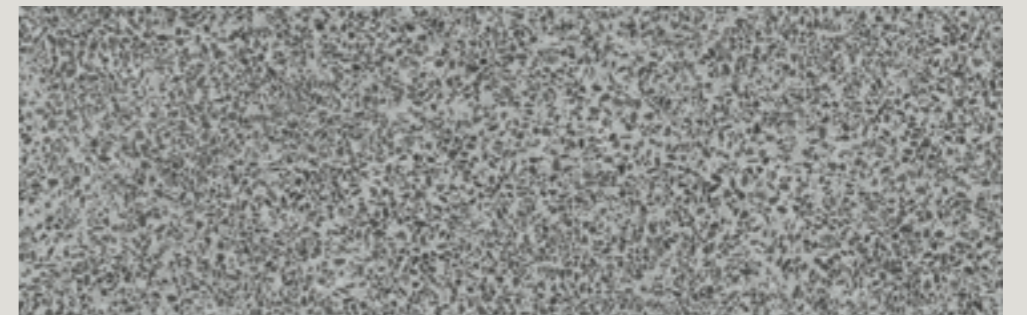
PIECE - DETAIL ZOOM



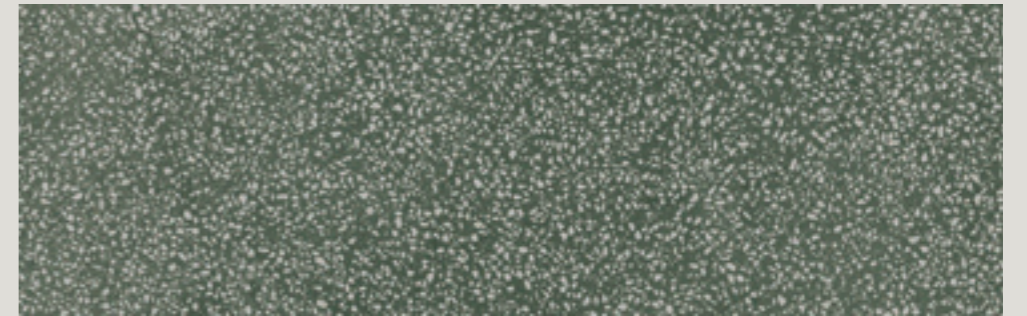
Piece  
Light



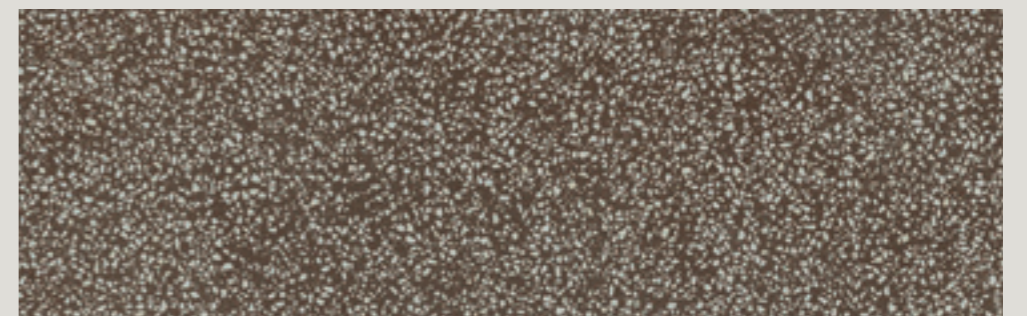
Piece  
Dark



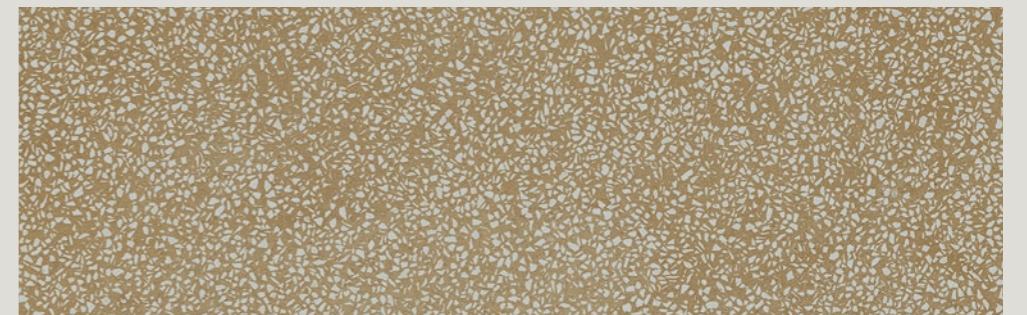
Piece  
Alpi



Piece  
Moka



Piece  
Siena





## Formati Gres / Stoneware Sizes <sup>LR7</sup>



### Gres porcellanato / Porcelain stoneware Spessore/thickness: 9mm



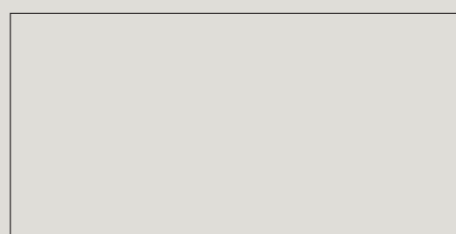
**PR( )TECT**  
ANTIBATTERICO - ANTIMICROBIAL



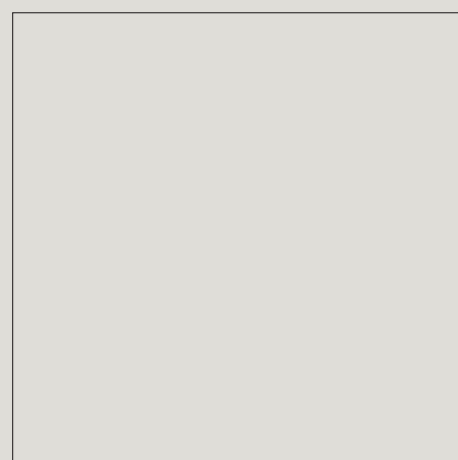
30x60cm  
12"x24"  
NAT



60x60cm  
24"x24"  
NAT / GRIP\*\*



60x120cm  
24"x48"  
NAT / GRIP\*\*

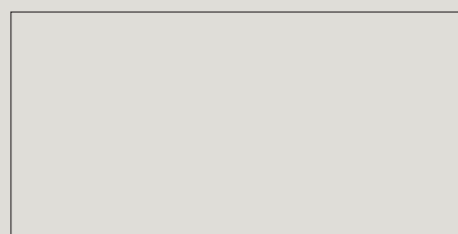


120x120cm  
48"x48"  
NAT

### \*Gres porcellanato spessorato / Extra thick porcelain stoneware Spessore/thickness: 20mm



L2



60x120cm  
24"x48"  
GRIP\*\*

\* Protezione antibatterica non presente - No antimicrobial protection

\*\* Escluso Master Brown - Except Master Brown

## Finiture / Finishes



### Nat



residenziale  
residential



commerciale leggero  
light commercial



commerciale intensivo  
intensive commercial

### Grip



esterno  
outdoor



*SUPERFICI CERAMICHE PIÙ LISCE E GRADEVOLI AL TATTO, CON ELEVATI STANDARD DI RESISTENZA ALLO SCIVOLAMENTO.*

*SMOOTHER CERAMIC SURFACES THAT ARE MORE PLEASING TO THE TOUCH, WITH HIGH STANDARDS OF SLIP RESISTANCE.*

*SURFACES EN CÉRAMIQUE PLUS LISSES ET PLUS AGRÉABLES AU TOUCHER, AVEC UN HAUT NIVEAU DE RÉSISTANCE AU GLISSEMENT.*

*BESONDERS GLATTE, SICH ANGENEHM ANFÜHLENDE KERAMIKBELÄGE MIT HOHER RUTSCHFESTIGKEIT.*



#### 1. MORBIDA AL TATTO E RUVIDITÀ MINIMA

Soft to the touch and smoother  
Douce au toucher et rugosité minimale  
Weiche Haptik und geringste Rauheit



#### 2. RESISTENZA ALLO SCIVOLAMENTO GARANTITA - R10

Guaranteed slip resistance - R10  
Résistance au glissement garantie - R10  
Garantiert rutschfest - R10



#### 3. IGIENICA E FACILE DA PULIRE

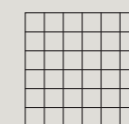
Hygienic and easy to clean  
Hygénique et facile à nettoyer  
Hygienisch und leicht zu reinigen



## Mosaici / Mosaics

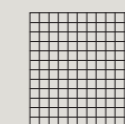


### Mosaico 36






30x30 cm  
12"x12"  
MASTER

### Mosaico Chip



30x30 cm  
12"x12"  
PIECE


## Fondi / Plain tiles

Master			Master White	Master Sand	Master Gray	Master Coal	Master Brown
120x120cm 48"x48"	 9mm	NAT	LG8M240	LG8M220	LG8M210	LG8M200	LG8M230
60x120cm 24"x48"	 9mm	NAT	LGXM240	LGXM220	LGXM210	LGXM200	LGXM230
		GRIP	LGXM245	LGXM225	LGXM215	LGXM205	LGXM235
60x60cm 24"x24"	 9mm	NAT	LGWM240	LGWM220	LGWM210	LGWM200	LGWM230
		GRIP	LGWM245	LGWM225	LGWM215	LGWM205	LGWM235
30x60cm 12"x24"	 9mm	NAT	LGVM240	LGVM220	LGVM210	LGVM200	LGVM230
60x60cm 24"x24"	 20mm	GRIP	LGXM295	LGXM275	LGXM265	LGXM255	-
60x120cm 24"x48"	 20mm	GRIP	LGXM295	LGXM275	LGXM265	LGXM255	-

## Fondi / Plain tiles


Piece			Piece Light	Piece Siena	Piece Alpi	Piece Dark	Piece Moka
120x120cm 48"x48"	 9mm	NAT	LG8M260	LG8M270	LG8M280	LG8M250	LG8M290
60x120cm 24"x48"	 9mm	NAT	LGXM260	LGXM270	LGXM280	LGXM260	LGXM290
60x60cm 24"x24"	 9mm	NAT	LGWM260	LGWM270	LGWM280	LGWM250	LGWM290
30x60cm 12"x24"	 9mm	NAT	LGVM260	LGVM270	LGVM280	LGVM260	LGVM290

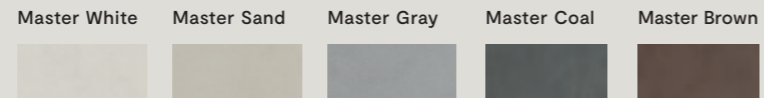
## Mosaici / Mosaics

			Master White	Master Sand	Master Gray	Master Coal	Master Brown
Mosaico 36	 30x30 cm 12"x12"	NAT	LGCM240	LGCM220	LGCM210	LGCM200	LGCM230
			Piece Light	Piece Siena	Piece Alpi	Piece Dark	Piece Moka
Mosaico Chip	 30x30 cm 12"x12"	NAT	LGCM260	LGCM270	LGCM280	LGCM250	LGCM290

## Pezzi Speciali / Trims

Spessore/thickness: 9mm

 gres porcellanato



Sezione gradino  
4cm / 1<sup>9</sup>/<sub>16</sub>"

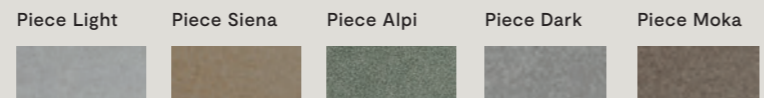


				Master White	Master Sand	Master Gray	Master Coal	Master Brown
Battiscopa		5,5x60cm 2"x24" rett	NATURAL	LGRM240	LGRM220	LGRM210	LGRM200	LGRM230
Gradino Plus*		35x120cm 13 <sup>3</sup> / <sub>4</sub> "x48" rett	NATURAL	LGDM221	LGDM215	LGDM209	LGDM203	LGDM200
			GRIP	LGDM224	LGDM218	LGDM212	LGDM206	
Angolo dx Gradino Plus*		35x120cm 13 <sup>3</sup> / <sub>4</sub> "x48" rett	NATURAL	LGDM222	LGDM216	LGDM210	LGDM204	LGDM201
			GRIP	LGDM225	LGDM219	LGDM213	LGDM207	
Angolo sx Gradino Plus*		35x120cm 13 <sup>3</sup> / <sub>4</sub> "x48" rett	NATURAL	LGDM223	LGDM217	LGDM211	LGDM205	LGDM202
			GRIP	LGDM226	LGDM220	LGDM214	LGDM208	

## Pezzi Speciali / Trims

Spessore/thickness: 9mm

 gres porcellanato



Sezione gradino  
4cm / 1<sup>9</sup>/<sub>16</sub>"



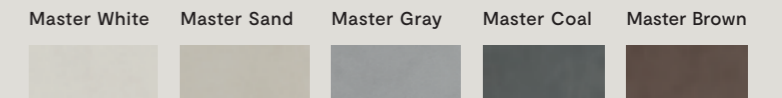
				Piece Light	Piece Siena	Piece Alpi	Piece Dark	Piece Moka
Battiscopa		5,5x60cm 2"x24" rett	NATURAL	LGRM260	LGRM270	LGRM280	LGRM250	LGRM290
Gradino Plus*		35x120cm 13 <sup>3</sup> / <sub>4</sub> "x48" rett	NATURAL	LGDM233	LGDM239	LGDM227	LGDM230	LGDM236
Angolo dx Gradino Plus*		35x120cm 13 <sup>3</sup> / <sub>4</sub> "x48" rett	NATURAL	LGDM234	LGDM240	LGDM228	LGDM231	LGDM237
Angolo sx Gradino Plus*		35x120cm 13 <sup>3</sup> / <sub>4</sub> "x48" rett	NATURAL	LGDM235	LGDM241	LGDM229	LGDM232	LGDM238

\* Su richiesta. Per maggiori informazioni circa quantità minime e tempi di consegna rivolgersi all'ufficio commerciale. / Upon request. For more information about minimum quantities and delivery times please contact the sales department.

## Pezzi Speciali / Trims

Spessore/thickness: 20mm

 L2



				Master White	Master Sand	Master Gray	Master Coal	Master Brown
Griglia*		15x60cm 6"x24" rett	GRIP	LG1M240	LG1M220	LG1M210	LG1M200	
Griglia Angolare sx*		15x60cm 6"x24" rett	GRIP	LG1M242	LG1M222	LG1M212	LG1M202	
Griglia Angolare dx*		15x60cm 6"x24" rett	GRIP	LG1M241	LG1M221	LG1M211	LG1M201	
Costa Toro*		30x60cm 12"x24" rett	GRIP	LGDM2F4	LGDM2F2	LGDM2F1	LGDM2F0	
Costa Toro Angolare sx*		30x60cm 12"x24" rett	GRIP	LGDM2B7	LGDM2B5	LGDM2B3	LGDM2B1	
Costa Toro Angolare dx*		30x60cm 12"x24" rett	GRIP	LGDM2B6	LGDM2B4	LGDM2B2	LGDM2B0	
Costa Retta*		30x60cm 12"x24" rett	RGRIP	LGDM2C4	LGDM2C2	LGDM2C1	LGDM2C0	
Costa Retta Angolare sx*		30x60cm 12"x24" rett	GRIP	LGDM2A7	LGDM2A5	LGDM2A3	LGDM2A1	
Costa Retta Angolare dx*		30x60cm 12"x24" rett	GRIP	LGDM2A6	LGDM2A4	LGDM2A2	LGDM2A0	
Costa Toro Step*		30x60cm 12"x24" rett	GRIP	LGDM2J4	LGDM2J2	LGDM2J1	LGDM2J0	
Costa Retta Step*		30x60cm 12"x24" rett	GRIP	LGDM2C4	LGDM2C2	LGDM2C1	LGDM2C0	
Costa Retta con Gocciolatoio*		30x60cm 12"x24" rett	GRIP	LGDM2H4	LGDM2H2	LGDM2H1	LGDM2H0	
Costa Toro con Gocciolatoio*		30x60cm 12"x24" rett	GRIP	LGDM2Y4	LGDM2Y2	LGDM2Y1	LGDM2Y0	

## Caratteristiche tecniche / Technical characteristics



Gres porcellanato / Porcelain stoneware		Conforme / According to: ISO 13006 G (Gruppo/Group Bla) EN 14411 G (Gruppo/Group Bla) ANSI A137.1 Porcelain tiles (P1 Class)	
	Metodo di prova / Test method	Requisiti prescritti / Required values	Valori medi / Average values
Assorbimento d'acqua / Water absorption	ISO 10545-3 ASTM C373	≤ 0,5%	0,05%
Sforzo di rottura S / Breaking strength	ISO 10545-4 ASTM C648	≥ 1300 N ≥ 250 lbf	1.800 N 9 mm 13.600 N 20mm 400 lbf 9 mm 2.800 lbf 20mm
Resistenza a flessione / Modulus of rupture	ISO 10545-4	≥ 35 N/mm <sup>2</sup>	50 N/mm <sup>2</sup>
Resistenza all'abrasione profonda / Resistance to deep abrasion	ISO 10545-6 ASTM C1243	≤ 175 mm <sup>3</sup>	145 mm <sup>3</sup>
Dilatazione termica lineare / Linear thermal expansion	ISO 10545-8 ASTM C372	Requisito non previsto/No provision	$\alpha \leq 7 \times 10^{-6} \text{ } ^\circ\text{C}^{-1}$ $\alpha \leq 4.4 \times 10^{-6} \text{ } ^\circ\text{F}^{-1} / \alpha \leq 8 \times 10^{-6} \text{ } ^\circ\text{C}^{-1}$
Resistenza alle macchie / Stain resistance	ISO 10545-14 ASTM C1378	Classe/Class 3 Min. Come indicato dal produttore / As indicated by manufacturer	5 Resistente/Resistant Class A Resistente/Resistant
Resistenza all'attacco chimico* / Chemical resistance	ISO 10545-13 ASTM C650	Come indicato dal produttore / As indicated by manufacturer	LA—HA Resistente/Resistant Class A Resistant
Resistenza al gelo / Frost resistance	ISO 10545-12 ASTM C1026	Nessuna alterazione/No alteration Come indicato dal produttore / As indicated by manufacturer	Resistente/Resistant Resistant
Resistenza allo scivolamento / Slip resistance	DIN EN 16165 Annex B	—	R10 (Nat) - R11 (Grip - Grip 20mm)
	DIN EN 16165 Annex A	—	A+B (Nat) - A+B+C (Grip - Grip 20mm)
	BCR-TORTUS	—	$\mu > 0,40$
	ANSI A326.3	—	ID - DCOF $\geq$ 0.42 (Dry) - NAT IW - DCOF $\geq$ 0.42 (Wet) - NAT IW+ *** - NAT EW - (Grip - Grip 20mm)
Reazione al fuoco / Fire reaction	EN 13823	CPR (UE) 305/2011, 2000/147/CE,	Classe / Class A1 (wall)
	EN 9239-1	UNI EN 13501-1	Classe / Class A1 fl (floor)
Flame spread	ASTM E84	No provision	Class A
	Fuga minima consigliata (**) recommended minimum joint (**)	INDOOR	—
OUTDOOR		—	5mm circa / approx.
Stonalizzazione / Shade variation	ANSI A137.1	Come indicato dal produttore / As indicated by manufacturer	V2 Variazioni minime / Slight variations

(\*) ad esclusione dell'acido fluoridrico e derivati / excluding hydrofluoric acid and its derivatives

(\*\*) salvo diversa indicazione dei Codici di Posa Nazionali. La larghezza delle fughe deve comunque essere decisa dalla Direzione Lavori  
the width of grout joints must be established by the installation supervisor, unless grout widths are regulated by national laying standards

(\*\*\*) Ad eccezione delle zone caratterizzate da un maggior rischio di scivolamento (come docce pubbliche, piscine coperte, ecc.) per le quali si consiglia una superficie Grip / With the exception of areas characterized by a higher risk of slipping (such as public showers, indoor swimming pools, etc.) for which a Grip surface is recommended

## Imballi / Packing

Articolo	Scatola		Pallet					
	cm	inch	pz.	mq	kg	scat.	mq	kg
Fondo	120x120	48"x48"	1	1,44	31,8	32	46,08	1.017,6
Fondo	60x120	24"x48"	2	1,44	31,8	36	51,8	1.144,8
Fondo	60x60	24"x24"	4	1,44	31,8	32	46,1	1.017,6
Fondo	30x60	12"x24"	9	1,62	35,0	32	51,8	1.120,0
Mosaico 36	30x30	12"x12"	5	0,45	9,3	60	27,0	558,0
Mosaico Chip	30x30	12"x12"	5	0,45	9,3	60	27,0	558,0
Battiscopa	5,5x60	2"x24"	12	7,2 m.l	8,5	50	360 m.l.	426,0
Gradino plus	35x120	13 <sup>3/4</sup> "x48"	2	0,84	34,0	12	10,1	408,0
Angolo gradino plus	35x120	13 <sup>3/4</sup> "x48"	1	0,42	17,0	24	10,1	408,0
Fondo (20mm)	60x120	24"x48"	1	0,72	32,5	36	25,9	1.170,0
Griglia	15x60	6"x24"	2	0,18	8,0	100	18,0	800,0
Griglia Angolare sx - dx	15x60	6"x24"	2	0,16	7,0	100	15,8	700,0
Costa Toro	30x60	12"x24"	1	0,18	8,1	100	18,0	812,5
Costa Toro Angolare sx - dx	30x60	12"x24"	1	0,14	6,1	100	13,5	610,0
Costa Retta	30x60	12"x24"	1	0,18	8,1	100	18,0	812,5
Costa Retta Angolare sx - dx	30x60	12"x24"	1	0,14	6,1	100	13,5	610,0
Costa Toro Step	30x60	12"x24"	1	0,18	8,1	100	18,0	812,5
Costa Retta Step	30x60	12"x24"	1	0,18	8,1	100	18,0	812,5
Costa Retta con Gocciolatoio	30x60	12"x24"	1	0,18	8,1	100	18,0	812,5
Costa Toro con Gocciolatoio	30x60	12"x24"	1	0,18	8,1	100	18,0	812,5

## Certificazioni / Certifications



\*MARCHIO CE Le DOP sono disponibili sul sito internet/DOP are available on the website leaceramiche.com

\*\*LEED Le Ceramiche, è membro di GBC Italia, organizzazione che promuove sul territorio italiano la realizzazione di edifici nel rispetto dell'ambiente, della salute e del benessere delle persone che ci vivono e lavorano./Lea Ceramiche is a member of the U.S. Green Building Council: this is an organization that promotes buildings that are environmentally responsible, profitable and healthy places to live and work.

\*\*\*EPD I prodotti Le Ceramiche possiedono Dichiarazione Ambientale di Prodotto (EPD) specifica di tipo III, certificata da ente terzo indipendente secondo le normative ISO 14025 e EN 15804. Disponibile su richiesta.

Lea Ceramiche products have a type III specific Environmental Product Declaration (EPD). This is certified by an independent third party according to ISO 14025 and EN 15804 standards. Available on request.

## Impieghi grès porcellanato / Uses



Alberghi  
Hotels



Locali pubblici  
Public spaces



Abitazioni  
Housing



Aeroporti  
Airports



Bar - Ristoranti  
Bar - Restaurants



Centri commerciali  
Malls



Negozi  
Shops



Stazioni  
Train stations

## Impieghi L2 / Uses



Vialetti  
Walkways



Parcheggi  
Parking areas



Parchi pubblici - giardini  
Public parks - gardens



Terrazze  
Terraces



Camminamenti piscine  
Pool decks



Zone industriali  
Industrial areas



Stabilimenti balneari  
Beach resorts



Aree urbane  
Urban areas

## Colophon / Company info

LEA CERAMICHE  
Via Cameazzo, 21  
41042 Fiorano Modenese  
Modena Italy

Concept and art direction:  
Group Marketing &  
Communications –  
Panariagroup

T +39 0536 837811  
E info@leaceramiche.it  
leaceramiche.com

Panariagroup  
Industrie Ceramiche S.p.A.

MILANO  
Contract Lab - Milano  
Via Brera 30, Milano  
Tel +39 02 76011406  
showroom\_milano@leaceramiche.it

USA  
Lea North America, LLC  
800 Clanton Road, Suite N  
Charlotte, NC 28217  
T +1 704 522 6300  
E info@leausa.us  
www.leausa.us

# Masterpiece overview



## Colori / Colors

### Master

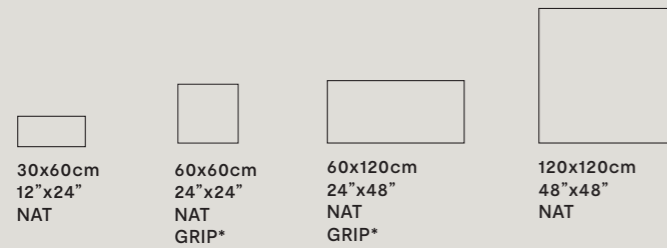


### Piece



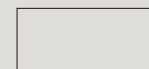
## Formati / Sizes <sup>LR<sup>T</sup></sup>

### Fondi/Plain Tiles



### Fondi/Plain Tiles

L2\*\* 20mm



60x120cm  
24"x48"  
GRIP\*

\* Escluso Master Brown - Except Master Brown  
\*\* Protezione antibatterica non presente  
No antimicrobial protection

### Mosaici/Mosaics

#### Mosaico 36



30x30 cm  
12"x12"  
MASTER

#### Mosaico Chip



30x30 cm  
12"x12"  
PIECE

## Awards



archproducts  
DESIGN AWARDS



SUSTAINABILITY  
MENTION



MENTION ON  
ADI DESIGN INDEX



EXPLORE IN 360°  
ON REAL.LEACERAMICHE.COM



**PROTECT**  
SUPERFICIE ANTIBATTERICA  
ANTIMICROBIAL SURFACE  
with MICROBAN®

Gres porcellanato  
Porcelain stoneware  
Spessore/thickness: 9mm

Gres porcellanato spessorato  
Extra thick porcelain stoneware  
Spessore/thickness: 20mm

[leaceramiche.com](http://leaceramiche.com)

