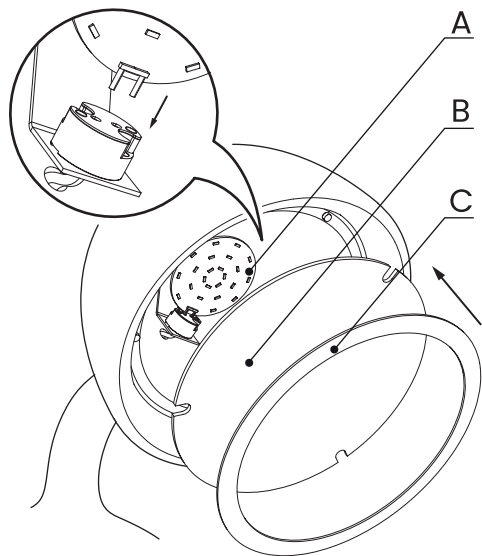


**SOSTITUZIONE SCHEDA LED/LAMPADINA G4
LED BOARD/G4 BULB REPLACEMENT
LED/REPLACEMENT D'AMPOULE G4
SUSTITUCIÓN LED/BOMBILLA G4**



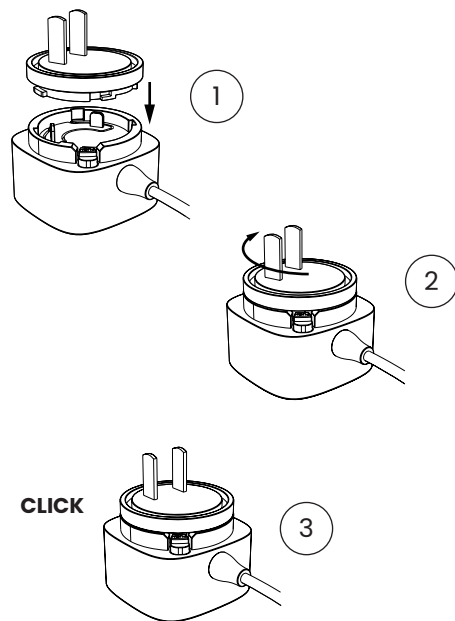
- Inserire la scheda LED/lampadina G4 (A) nel portalampada
- Posizionare il diffusore (B) nella calotta, allineando le asole con i magneti e tenendolo in posizione
- Posizionare l'anello di tenuta (C) sul diffusore

- Insert the LED board/G4 bulb (A) into the lamp holder
- Position the diffuser (B) in the cap, aligning the slots with the magnets and holding it in position
- Place the sealing ring (C) on the diffuser

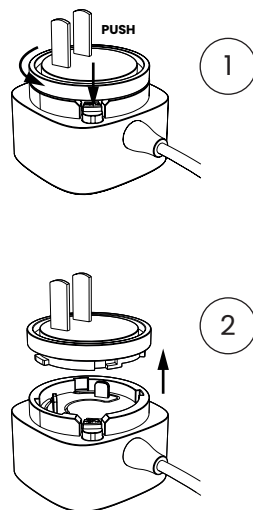
- Insérez la carte LED/l'ampoule G4 (A) dans le support de lampe.
- Positionnez le diffuseur (B) dans le capuchon en alignant les fentes avec les aimants et en le maintenant en position.
- Placez la bague d'étanchéité (C) sur le diffuseur

- Inserte la placa LED/bombilla G4 (A) en el portalámparas
- Coloque el difusor (B) en la tapa, alineando las ranuras con los imanes y manteniéndolo en su posición
- Coloque el anillo de sellado (C) en el difusor

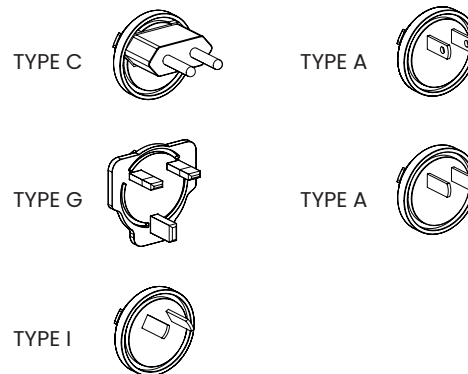
**MONTAGGIO KIT ALIMENTAZIONE - SOLO EXTRA UE
POWER KIT ASSEMBLY - EXTRA EU ONLY
ASSEMBLAGE DU KIT D'ALIMENTATION - EXTRA UE
CONJUNTO DEL KIT DE ALIMENTACIÓN - SOLO EXTRA UE**



**SMONTAGGIO KIT DI ALIMENTAZIONE
POWER KIT DISASSEMBLY
DÉMONTAGE DU KIT D'ALIMENTATION
DESMONTAJE DEL KIT DE ALIMENTACIÓN**



**INCLUSO NEL KIT - SOLO EXTRA UE
INCLUDED IN THE KIT - EXTRA EU ONLY
INCLUS DANS LE KIT - EXTRA UE UNIQUEMENT
INCLUIDO EN EL KIT - SOLO EXTRA UE**

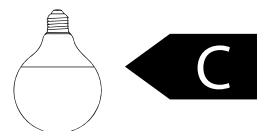
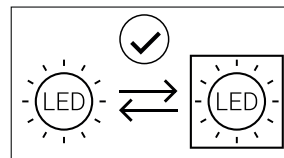


- Il prodotto contiene una sorgente luminosa di classe energetica C

- The product contains an energy class C light source

- Le produit contient une source lumineuse de classe énergétique C

- El producto contiene una fuente de luz de clase energética C

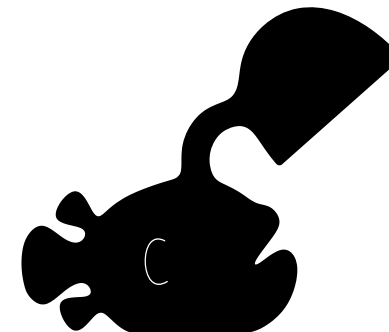


Prodotto e distribuito da: QEEBOO MILANO S.r.l.
Via Stendhal, 35 - Milano (MI) - Italy
info@qeeboo.com - qeeboo.com
0070182_V1

MADE IN ITALY

qeeboo.com

qeeboo



ABYSS
BY DAI SUGAWA

