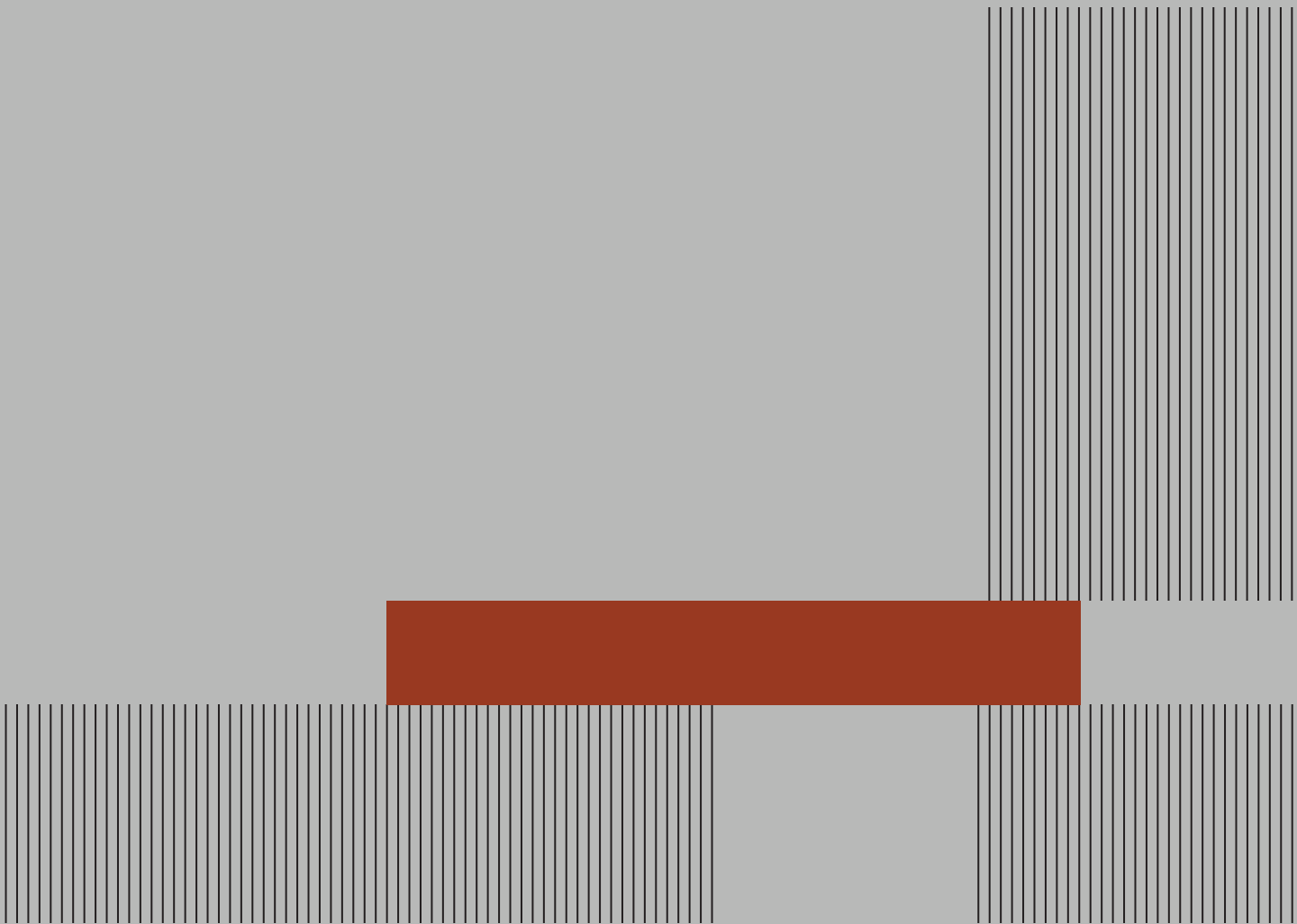




ATLANTE
LIVING



TOMASELLA
ITALIER

ATLANTE LIVING

ZEN INSPIRATION	PAG. 2
GLAM LOOK	PAG. 30
MODERN MOOD	PAG. 56
LIGHT SOUL	PAG. 72
URBAN LOFT	PAG. 108
NATURAL LIFESTYLE	PAG. 138

FINITURE E COLORI	PAG. 156
FINISHES AND COLOURS	

PAGINE SINTESI	PAG. 162
SUMMARY	

ZEN INSPIRATION

ROVERE CARBONE

Il fascino orientale di Atlante è un perfetto equilibrio di materiali, colori e forme. I toni scuri invitano alla riflessione, le diverse matericità richiamano il contatto diretto con la natura e le lavorazioni speciali delle superfici esprimono il valore dell'artigianalità.

COAL OAK

Atlanta's eastern charm derives from a perfect balance of materials, colours and forms. The dark tones are an invitation to introspection, the different textures are reminiscent of a direct contact with nature and the special surface finishes express the value of craftsmanship.



ATLANTE UNIT _ AT101
L/W 342 P/D 30/51 H 200 CM

+PROJECT PLUS
SCENARIO schienale per basi
base unit back panel
DOT pensile - wall unit
LINK schienale - back panel
TRACKS basamento - base
REGOLO maniglia - handle

Legno rovere carbone,
materico rovere carbone e
rovere carbone canettè,
materico piasentina scura,
Metallo salina 163
e metallo antracite 160.

Coal oak wood, textured
coal oak and reeded
coal oak, textured dark
piasentina.
Salt grey 163 metal and
anthracite 160 metal.





Dietro il frontale del pensile Dot si apre uno spazio utile per contenere. Il living si arricchisce di un nuovo elemento funzionale e allo stesso tempo decorativo, che evoca la pienezza della luna nella forma e nella matericità della finitura piacentina scura.

The Dot wall unit's front opens up to reveal some useful storage space. The living room is enriched by a new unit that is functional as well as decorative, whose shape and whose textured dark Piastentina finish are reminiscent of a full moon.



Lo schienale Scenario rialzato delle basi e lo schienale Link con mensole in metallo sono caratterizzati dal legno rovere carbone canettè. L'effetto millerighe del legno torna sul vetro delle madie per un living sofisticato nelle tonalità e nella combinazione degli arredi.

Both the high Scenario base unit back panel and the Link back panel with its metal shelves feature reeded coal oak wood. The ribbed effect of the wood is picked up by the glass on the sideboards for a sophisticated living room in terms of shades and furniture combinations.

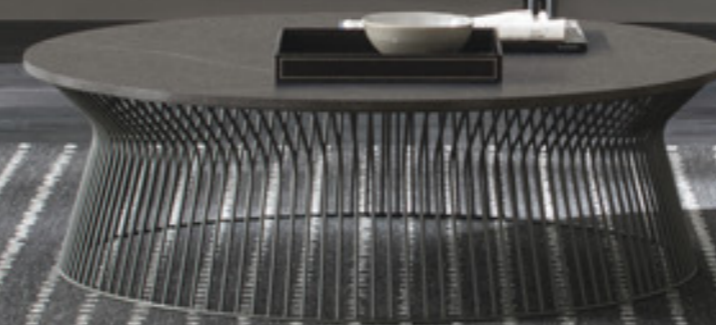
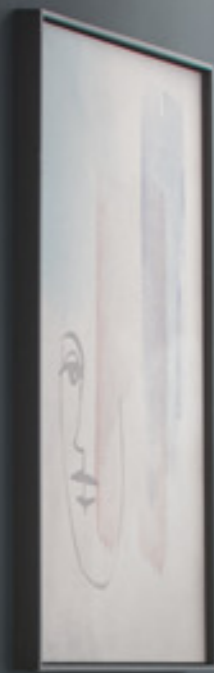


ATLANTE UNIT _ AT102
L/W 378 P/D P 32/40/51 H 220/250 CM

+PROJECT PLUS
SQUARE terminale - end unit
TRACKS basamento - base
VINCI anta - door
ELLE&FILO mensola - floating shelf

Legno rovere carbone e rovere
carbone canettè, materico
rovere carbone, laccato
metallizzato ghisa 091
e metallo antracite 160.

Coal oak wood and reeded
coal oak, textured coal oak,
metallic cast iron 091 and
anthracite 160 metal.





Le basi hanno due diverse altezze per dare dinamismo alla composizione. Il legno rovere canettè nella tonalità carbone riveste il frontale della base più alta e la schiena del terminale Square portando in più elementi del living l'effetto tattile e visivo di una finitura di tendenza.

The base units have two different finishes to add movement to the arrangement. Coal-coloured reeded oak wood dresses up the front of the tallest base unit as well as the back panel of the Square end unit, adding the tactile and visual effect of this trendy finish to various elements in the living room.



La mensola Elle&Filo sembra fluttuare nell'aria ma è tenuta ben salda da un tirante sottile: un gioco visivo accattivante, che sa rendere originale un design semplice. Nonostante la sua leggerezza, la mensola si fa notare.

The Elle&Filo shelf looks as if it's floating in mid-air but it's kept firmly in place by a thin cable: an eye-catching visual effect that turns a simple design into something truly original. Regardless of its fleeting lightness, this shelf gets itself noticed.



ATLANTE UNIT _ AT104
L/W 288 P/D 21/51 H 220 CM

+PROJECT PLUS
TOP SPESSORE 6 CM - 6 cm thick top
TRACKS basamento - base
SIR top - top

Legno rovere carbone, materico
piacentina scuro e metallo rubino 172.

Coal oak wood, textured dark
piacentina and ruby 172 metal.





Il vassoio Sir sul top è un elemento di design pratico e decorativo. Il basamento metallico Tracks valorizza l'orizzontalità della composizione.

The Sir tray-top is a practical and decorative design element. The tracks metal base enhances the horizontality of the composition.







Il televisore è fissato sul pannello girevole Pivot, cambia orientamento per garantire sempre una visione perfetta, da qualsiasi angolo della stanza.

The TV is attached to the Pivot swivel panel by which its position can be adjusted to watch it from the perfect angle, no matter where you are in the room.





UNIT _ AT107
L/W 288 P/D 38,5 H 187,5 CM

+ **PROJECT PLUS**
FORTEBRACCIO
libreria - bookcase

Materico cemento chiaro,
materico rovere carbone
e metallo antracite.

Textured light cement,
textured coal oak and
anthracite metal.



ATLANTE UNIT _ AT108
L/W 360 P/D 22/40 H 203 CM

+PROJECT PLUS
SQUARE totem
DOT pensile - wall unit
VINCI anta - door

Legno rovere moka canettè,
materico rovere moka, laccato
metallizzato bronzo 090
e metallo antracite 160.

Reeded mocha oak wood,
textured mocha oak, metallic
bronze 090 and metallic
anthracite 160 lacquer.





Il legno rovere moka canettè è caratterizzato da un motivo a righe verticali, in rilievo: la finitura riveste ma soprattutto decora il frontale con un gusto ricercato e di tendenza.

Reeded mocha oak wood features a surface with raised, vertical lines: a finish that dresses up fronts by decorating them with its refined, trendy style.



ATLANTE UNIT _ AT109
L/W 342 P/D 24/30/47/51 H 166.5 CM

+PROJECT PLUS
LINK schienale - back panel
PANKA

Legno rovere moka e rovere
moka canettè, materico ossido
brunito, laccato opaco salina 163
e metallo antracite 160.

Mocha oak wood and reeded
mocha oak, textured burnished oxide,
matt salt grey 163 lacquer
and anthracite 160 metal.





Il materico ossido brunito è una particolare finitura dall'effetto metallizzato e cangiante che valorizza le superfici con una nuova resa visiva e tattile. Ideale per essere abbinata ad altre matericità, come il legno rovere moka nella versione liscia e canettè.

Textured burnished oxide is an original, metallic-effect finish that changes colour and enhances surfaces with its new visual and tactile features. It's the ideal finish to combine with other textures such as plain or reeded mocha oak wood.

ATLANTE UNIT _ AT110
L/W 342 P/D 40 H 182 CM

Legno rovere moka canettè, materico
opaco arena e metallo antracite 160.

Reeded mocha oak wood, textured
matt arena and anthracite 160 metal.

+PROJECT PLUS

SQUARE nicchia - recess

SIPARIO boiserie - wall panelling

VINCI frontale cassetti - drawer fronts





Sul frontale del cassetto Vinci e sulla schiena della nicchia Square, il legno rovere moka canettè crea un piacevole gioco di richiami materici. Gli elementi comunicano tra di loro e disegnano geometrie.

Reeded mocha oak wood creates a pleasant interplay of textural finishes on the Vinci drawer front and on the back panel of the Square recess. Different furniture parts communicate with each other, creating intriguing geometries.







Space system è impreziosito dall'anta Vinci con profilo in metallo e frontale disponibile in diverse finiture. Un elemento originale per dare movimento alla composizione.

The Space system is enhanced by the Vinci door with its metal frame and its front available in various finishes. An original feature that adds movement to the arrangement.



ATLANTE UNIT _ AT112
L /W 342 P/D 22/30/40 H 220 cm

+PROJECT PLUS
KREA LIGHT boiserie - wall panelling
REGOLO maniglia - handle

Materico opaco arena,
materica rovere moka
e metallo arena 178.

Textured matt arena,
textured mocha oak and
arena 178 metal.





Tono su tono o a contrasto, la maniglia Regolo con interno personalizzato dà carattere e stile a basi e pensili.



Tone-on-tone or in a contrasting shade, the Regolo handle with a customised insert adds character and style to base and wall units..



ATLANTE UNIT _ AT113
L/W 378 P/D 22/30/51 H 174,5 CM

+PROJECT PLUS
KREA boiserie - wall panelling
GOLA maniglia- grip recess

Laccato metallizzato ghisa 091, metallo
antracite 160 e materico rovere moka,
laccato opaco salina 163.

Metallic cast iron 091 lacquer, anthracite
160 metal and textured mocha oak, matt
salt grey 163 lacquer.



Krea, di nome e di fatto: la boiserie-libreria è progettata per creare molteplici composizioni. I divisori, in legno e metallo accoppiati, sono la sua caratteristica distintiva.

Krea stands for creativity, by name and by nature: the wall panelling-cum-bookcase is designed to create a great variety of arrangements. The dividers – in wood and metal – are its distinctive feature.



MODERN MOOD

NOCE AMBRA

La modernità di Atlante si esprime accostando le venature del materico noce ambra a colori pieni e texture minimal. Materiali caldi e tonalità fredde si incontrano nel living e creano una piacevole armonia visiva, che rilassa corpo e mente.

AMBER WALNUT

Atlante's modern bent expresses itself by pairing the grain of textured amber walnut with solid colours and minimal textures. Warm materials and cold shades meet in the living room and create pleasant visual harmony that relaxes the mind and body.



ATLANTE UNIT _AT114
L/W 360 P/D 26/40 H 164 CM

+PROJECT PLUS
CORNER nicchia - recess
RING mensola - shelf

Materico noce ambra, materico
canvas, laccato opaco basalto 177
e metallo basalto 177.

Textured amber walnut, textured
canvas, matt basalt 177 lacquer
and basalt 177 metal.





Il modulo in materico noce ambra poggia sulla base a terra, prosegue oltre integrandosi alla colonna contenitore in materico canvas fino ad affiancare la nicchia Corner realizzata in in metallo laccato. La composizione è sfalsata ed estremamente geometrica.



The textured amber walnut module sits on the floor-standing base unit and extends beyond it into the adjacent textured canvas tall unit until it meets up with Corner a laquered metal recess. This arrangement is offset and very geometrical.

La mensola Ring deve il suo nome agli anelli in metallo che racchiudono il piano di appoggio in materico noce ambra. La retroilluminazione dà valore aggiunto all'elemento e ne aumenta visivamente le profondità.

The Ring shelf's name comes from the metal rings that encircle the shelf in textured amber walnut. The back lighting enhances the shelf and makes it look deeper.



ATLANTE UNIT _ AT115
L/W 360 P/D 30/51 H 173 CM

+PROJECT PLUS
SQUARE nicchia - recess
TOP SPESSORE 6 CM
top thickness 6 cm
SIR top

Materico noce ambra, materico
alpaca, materico opaco arena e
metallo antracite 160

Textured amber walnut, textured
alpaca, textured matt arena and
anthracite metal 160





Le basi alternano volumi pieni e vuoti con un top dal forte spessore e un piano di appoggio Sir "a vassoio". Due diversi elementi di design nella stessa finitura in materico noce ambra, che movimentano la linearità della composizione.



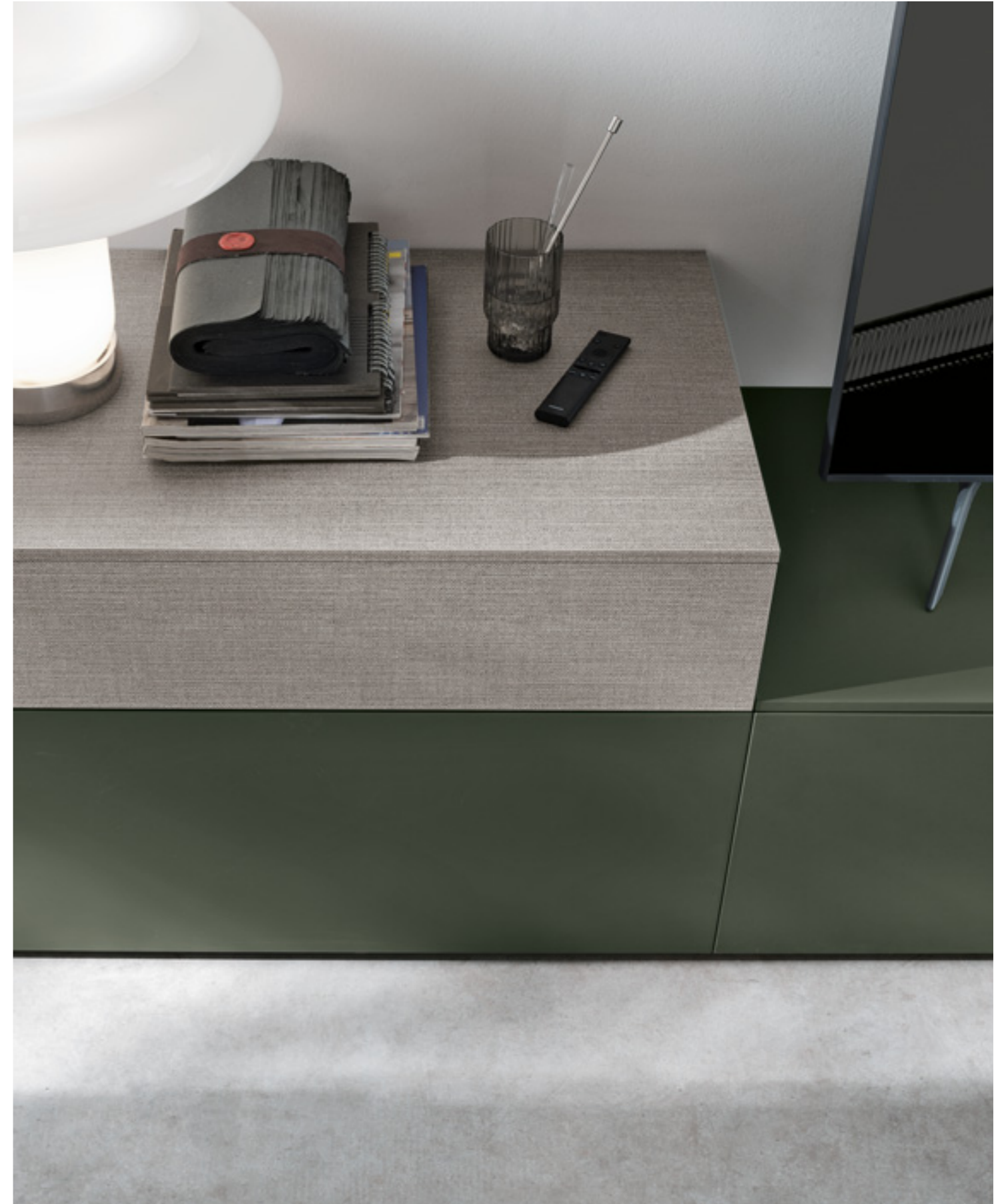
The base units alternate solids and courtesies means of a very thick top flanked by a slim Sir "tray" top. Two different design elements in the same textured amber walnut finish add movement to the arrangement's linear lines.





Il materico alpaca è abbinato al materico noce ambra nel pensile e al laccato opaco bosco 168 nelle basi. Una finitura moderna e versatile, che si armonizza sia con la naturalezza delle venature, sia con i colori pieni.

Textured alpaca is paired with the textured amber walnut of the wall unit and the matt forest green 168 lacquer of the base units. It is a modern and versatile finish that harmonises both with natural veins and with solid colours.



LIGHT SOUL

ROVERE SABBIA

La leggerezza di Atlante è l'assoluta libertà di creare il proprio living. Il rovere sabbia può essere accostato alle tonalità chiare, sta bene con i colori pieni, trova ulteriore forza espressiva con le matericità decise. Ognuno ha il suo modo di sentirsi più leggero.

SAND OAK

Atlanta gives you total freedom to create the living room of your dreams. Sand oak can be paired with light shades, looks good with solid colours and grows in expressive power when combined with bold, textural finishes. Everyone has their own way of feeling light.



ATLANTE UNIT _ AT117
L/W 342 P/D 30/40 H 186 CM

+PROJECT PLUS
SQUARE totem
SIPARIO boiserie - wall panelling
TOP SPESSORE 6 CM
top thickness 6 cm

Materco rovere sabbia, materico
cemento scuro, metallo
antracite 160.

Textured sand oak, textured
dark cement, anthracite
160 metal.





Il materico rovere sabbia riveste il pensile con anta a ribalta, il top e lo schienale delle basi e lo schienale del totem Square. Una finitura delicata e naturale che trova nell'abbinamento con il materico cemento scuro un connubio perfetto.

Textured sand oak distinguishes the flap door wall unit, the top and the base units' and Square Totem's back panel. This natural, delicate finish marries perfectly with textured dark cement.



ATLANTE UNIT _ AT118
L/W 342 P/D 24/30/40/51 H 170 CM

+PROJECT PLUS
LINK PLUS schienale - back panel
DOT pensile - wall unit

Materico rovere sabbia, materico
alpaca, laccato opaco onice 167
e metallo antracite 160.

Textured sand oak, textured alpaca,
matt onyx 167 lacquer and
anthracite 160 metal.



Dietro la forma perfetta del pensile Dot si nasconde un contenitore sul quale viene montato uno specchio laterale. Il riflesso alleggerisce visivamente l'elemento che sembra staccato dalla parete, quasi sospeso nell'aria: un dettaglio non trascurabile se si accede al living di lato.

The perfect shape of the Dot wall unit's doors conceals a storage unit with a side mirror. Its reflection creates visual lightness, making it look as if it is detached from the wall and almost suspended in mid-air: a detail that doesn't go unnoticed when viewed from the side.









Il vassoio Sir in laccato opaco terracotta 170 aggiunge un tocco di colore a una madia essenziale e sospesa in materico alpaca.



The Sir tray-top in matt terracotta 170 lacquer adds a touch of colour to the minimalist, wall-hung sideboard in textured alpaca.

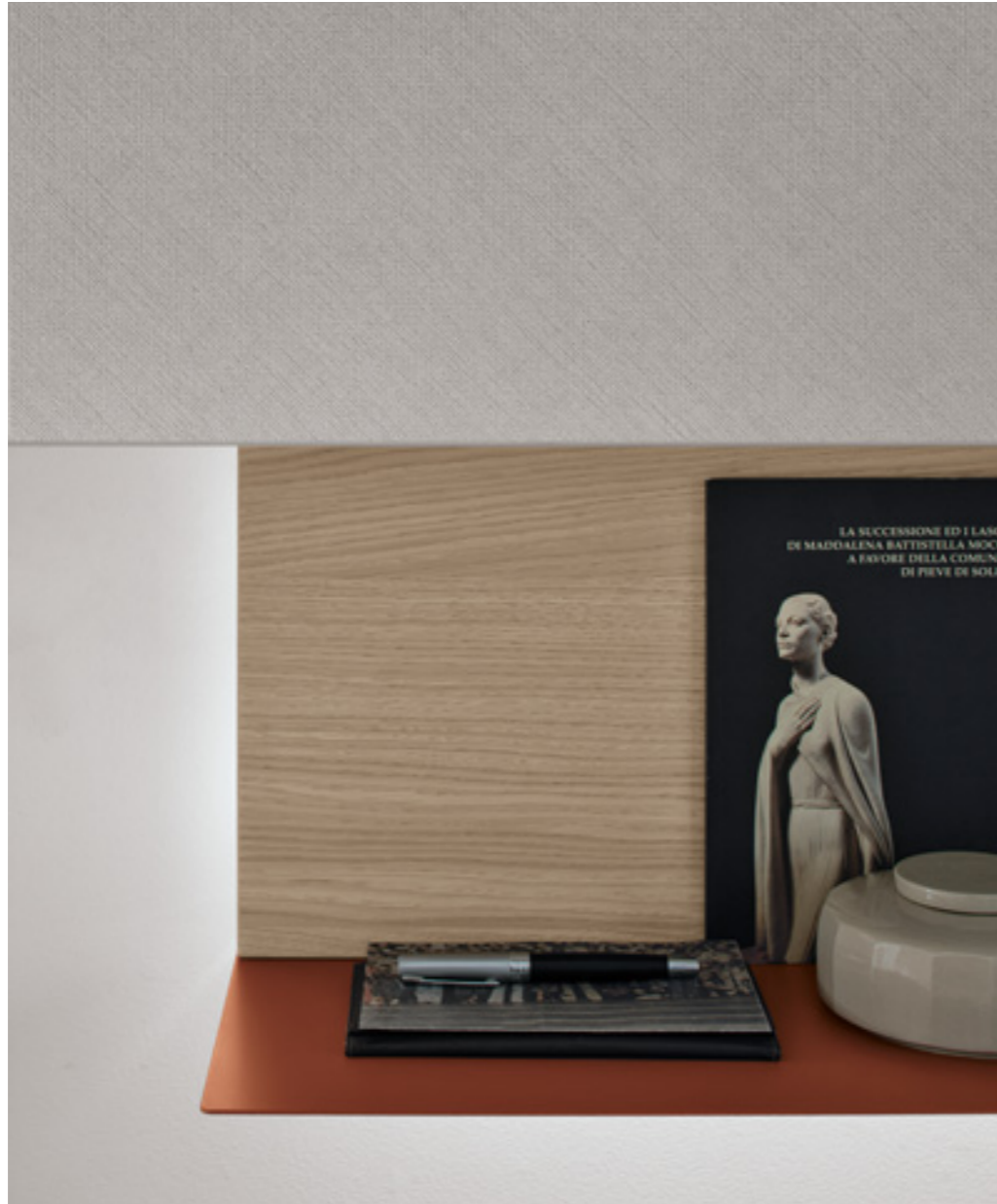
ATLANTE UNIT _ AT120
L/W 396 P/D 24/30/40/51 H 167.5 CM

+PROJECT PLUS
LINK schienale - back panel
PIANALE SPESSORE 6 CM
top thickness 6 cm

Matericovere sabbia, materico
canvas, laccato opaco curcuma 169,
metallo curcuma 169 e tabasco 171.

Textured sand oak, textured canvas,
matt turmeric 169 lacquer and turmeric
169 and tabasco 171 metal.





Uno schienale, composto da mensole in metallo sopra e sotto, si integra al pensile: un elemento di design e, allo stesso tempo, un pratico piano di appoggio che completa la funzionalità e lo stile della postazione home office.



A back panel, complemented by two metal shelves, one above and one below, is intersected by a wall unit: a design piece which also serves as a handy set-down surface that completes the functionality and style of this home office corner.



Basi e pensili contengono, l'elemento Panka sorregge la tv e la boiserie Krea funge da libreria: il living risulta multifunzionale e completo attrezzando una sola parete. Il mix di finiture distingue i diversi arredi, ma il risultato d'insieme è armonioso ed equilibrato.

Base and wall units serve for storage, the Panka element accommodates the TV and the Krea wall panelling is fitted out as a bookcase: for a multifunctional living room that has everything you need on just one wall. The different finishes distinguish each piece of furniture but still work together to form a harmonious and well-balanced end result.



ATLANTE UNIT _ AT122
L/W 378 P/D 22/30/40/47 H 184 CM

+PROJECT PLUS
KREA boiserie - wall panelling
REGOLO maniglia - handle

Materico opaco antracite, materico
rovere sabbia, materico cemento
cava, materico cemento scuro e
metallo antracite 160.

Textured matt anthracite, textured
sand oak, textured cava cement,
textured dark cement and anthracite
160 metal.





ATLANTE UNIT _AT123
L/W 288 P/D 22 H 135 CM

+ **PROJECT PLUS**
KREA boiserie - wall panelling

Materico rovere sabbia
e metallo bianco gesso 121.

Textured sand oak and chalk
white 121 metal.



ATLANTE UNIT _ AT125
L/W 360/234 P/D 18/30/40/47/51 H 202 CM

+PROJECT PLUS
TETRIS elemento in metallo
metal unit
REGOLO maniglia - handle
PANKA

Materico opaco madreperla, legno
rovere sabbia, materico rovere sabbia,
metallo antracite 160 madreperla 124.

Textured matt mother-of-pearl,
sand oak wood, textured sand oak,
anthracite 160 and mother-of-pearl-124
metal.





L'elemento Tetris a giorno retroilluminato in metallo è un elemento di raccordo tra i pensili e ha la schiena personalizzabile. L'arredo Panka ad angolo valorizza la parete laterale diventando una base d'appoggio che non appesantisce lo spazio. La maniglia Regolo disegna una linea decorativa nelle basi.



The rear-lit Tetris open unit in metal connects the wall units and features a customisable back panel. The corner Panka element enhances the side wall and offers a set-down surface that doesn't weigh the arrangement down. The Regolo handle draws a decorative horizontal line across the base units.



L'anta Media Box in metallo microforato lascia passare il segnale del telecomando verso i dispositivi inseriti all'interno del mobile.

The micro-perforated metal Media Box door lets the remote control signal through so that it can reach the devices inside the cabinet.



ATLANTE UNIT _ AT126
L/W 378 P/D 24/30/40/47 H 184 CM

+ **PROJECT PLUS**
REMIX pensile - wall unit
BIBLO librerie - bookcases
MEDIA BOX base - base unit
PANKA

Laccato opaco ghiaccio 173, legno
rovere sabbia e materico rovere
sabbia.

Matt ice 173 lacquer and sand oak
wood and textured sand oak.

URBAN LOFT

GRAPHIC & COLOURS

La creatività di Atlante non ha limiti e il living è un ambiente fluido in cui matericità più o meno accentuate, colori chiari o scuri e grafiche diverse si mixano tra di loro per adattarsi alla molteplicità degli stili di vita metropolitani. L'estetica va di pari passo con la funzionalità.

GRAPHIC DESIGNS & COLOURS

Atlante boasts endless creativity, resulting in the living room becoming a fluid space in which surfaces with different degrees of textures, light and dark shades and various patterns mix to adapt to diverse metropolitan lifestyles. Aesthetic walks hand-in-hand with functionality.

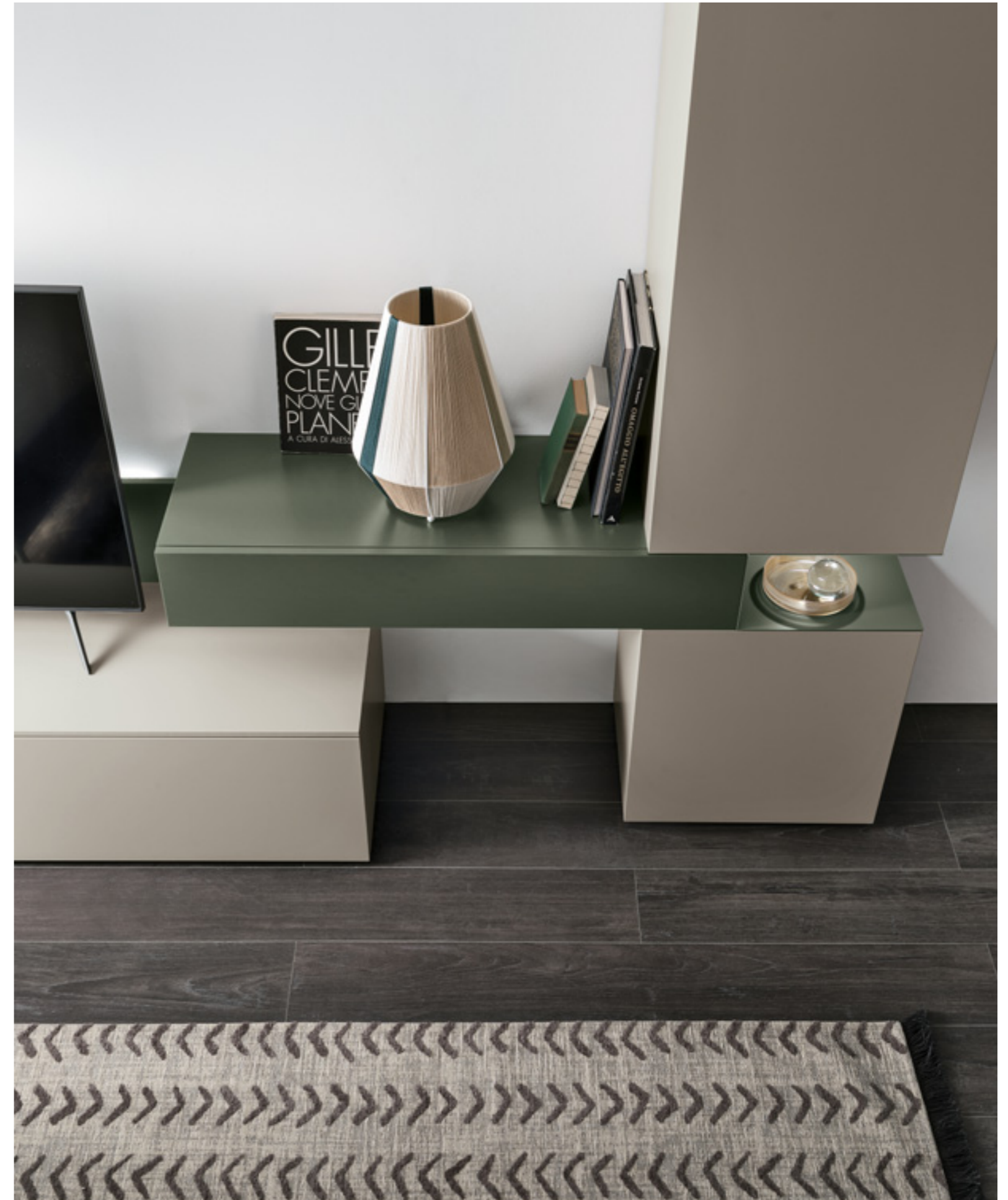






Un elemento in metallo con luce integrata interrompe la continuità della colonna contenitore inserendosi con discrezione tra i moduli. Lo spazio vuoto è riempito dal colore pieno e dal tocco luminoso che mette in luce oggetti preziosi.

A metal open compartment with an integrated light interrupts the continuous, vertical line of the tall unit, fitting discreetly between modules. The empty space is filled with solid colour and with a light that sets off precious objects.





La linea dei pensili in laccato opaco bromo 176 è interrotta dalla nicchia Corner in metallo laccato opaco tabasco 171 e da un modulo con frontale Vinci in rovere carbone canettè: un mix di geometrie, finiture e colori per un living misurato ma accattivante.

The line of wall units in matt bromine 176 lacquer is interrupted by the Corner alcove in matt tabasco 171 lacquered metal and by a module with a Vinci front in reeded coal oak: a combination of geometries, finishes and colours for a well-balanced yet eye-catching living room







ATLANTE UNIT _ AT136
L/W 391 P/D 38,5/40/47 H 189,5 CM

+PROJECT PLUS
TOTEM ELLE
PANKA
FORTEBRACCIO libreria - bookcase

Materico opaco basalto,
materico opaco antracite,
laccato curcuma 169 e
metallo curcuma 169.

Textured matt basalt, textured
matt anthracite, matt turmeric
169 lacquer and turmeric
169 metal.

GRAPHIC



ATLANTE UNIT _ AT137
L/W 432 P/D 26/40 H 182 CM

+PROJECT PLUS
GRAPHIC schienale - back panel
KREA boiserie - wall panelling

Laccato opaco bosco 168,
rovere sabbia con grafica 9101W.
Metallo tabasco 171.

Matt forest green 168 lacquer,
sand oak with graphic design 9101W.
Tabasco 171 metal.





ATLANTE UNIT _ AT138
L /W 396 P/D 30/40/47/51 H 218 CM

+PROJECT PLUS
ELEMENTO Z - unit Z
PIANO SCRITTOIO desk top
GRAPHIC anta - door

Materico opaco bianco gesso, materico
nodato chiaro, grafica 4001
e metallo bianco gesso 121.

Textured matt chalk white, textured light
knotted, graphic 4001 chalk white 121
metal finishes.

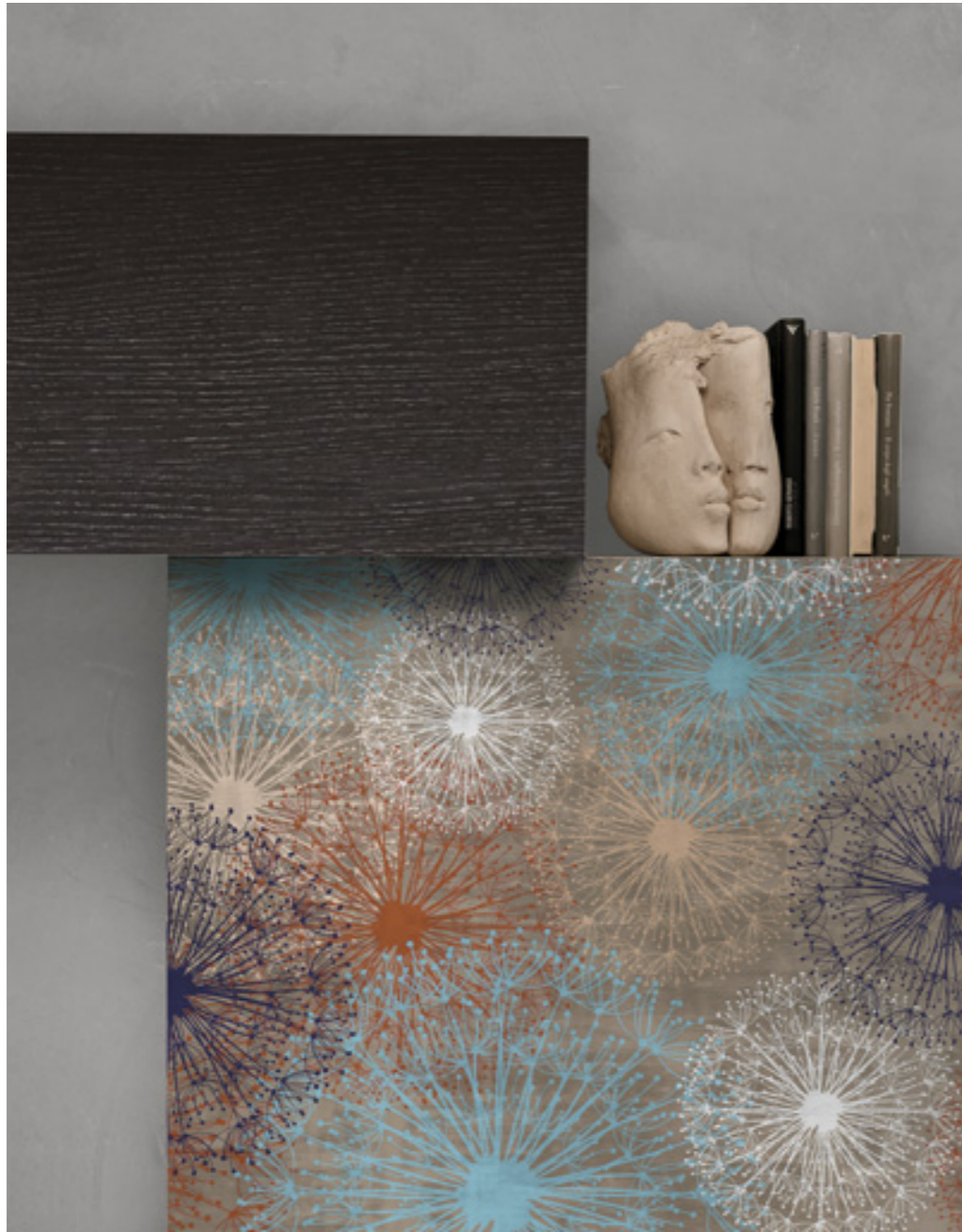
ATLANTE UNIT _ AT139
L/W 306 P/D 24/40/51 H 180 CM

+PROJECT PLUS
BIBLO libreria - bookcase
METROPOLIS anta - door
GRAPHIC anta - door

Materico opaco antracite, grafica
4500, materico cemento chiaro e
laccato opaco carta da zucchero 155.

Textured matt anthracite, graphic
design 4500, light textured cement
and matt blue grey 155 lacquer.





ATLANTE UNIT _ AT140
L/W 342 P/D 30/40/51 H 180 CM

+PROJECT PLUS
ELEMENTO Z - unit Z
GRAPHIC anta - door
METROPOLIS anta - door

Materico rovere carbone, grafica
9003, metallo antracite 160 e
laccato opaco tabasco 171.

Textured coal oak, graphic design
9003, anthracite 160 metal and matt
tabasco 171 lacquer.



GRAPHIC

DETTAGLIO GRAFICA RIDOTTO AL 90%
GRAPHIC DETAIL REDUCED TO 90%



GRAFICA STAMPATA SU PANNELLO MATERICO PORO APERTO CON BORDO BICOLOR

GRAPHICS PRINTED ON TEXTURED OPEN PORE PANEL WITH TWO-TONE EDGE

BOISERIE KREA (CODICE 900 / 9000)
PENSOLE Z - ANTE (CODICE 400 / 4000)

KREA WALL PANELLING (CODE 900 / 9000)
Z UNIT - DOORS (CODE 400 / 4000)



9001 / 4001



9003 / 4003



9004 / 4004



9002 / 4002



9005 / 4005



9006 / 4006

GRAPHIC

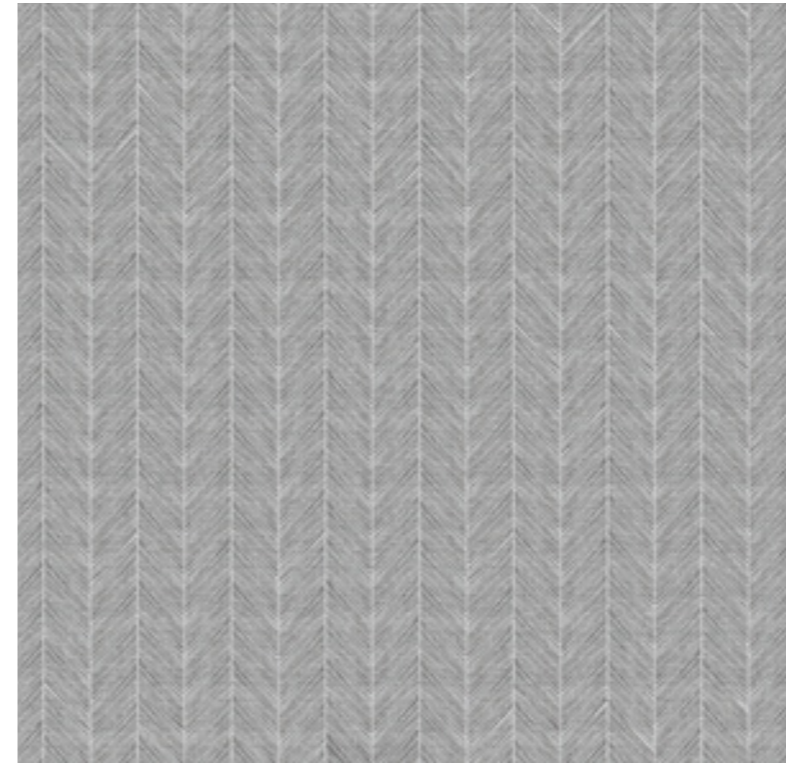
DETTAGLIO GRAFICA RIDOTTO AL 90%
GRAPHIC DETAIL REDUCED TO 90%



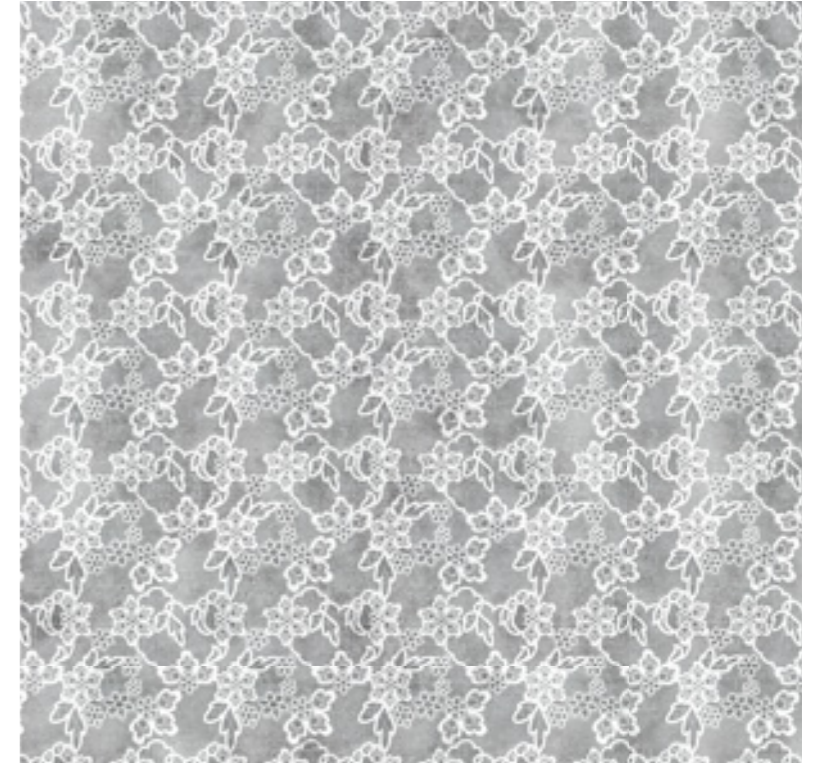
9007 / 4007



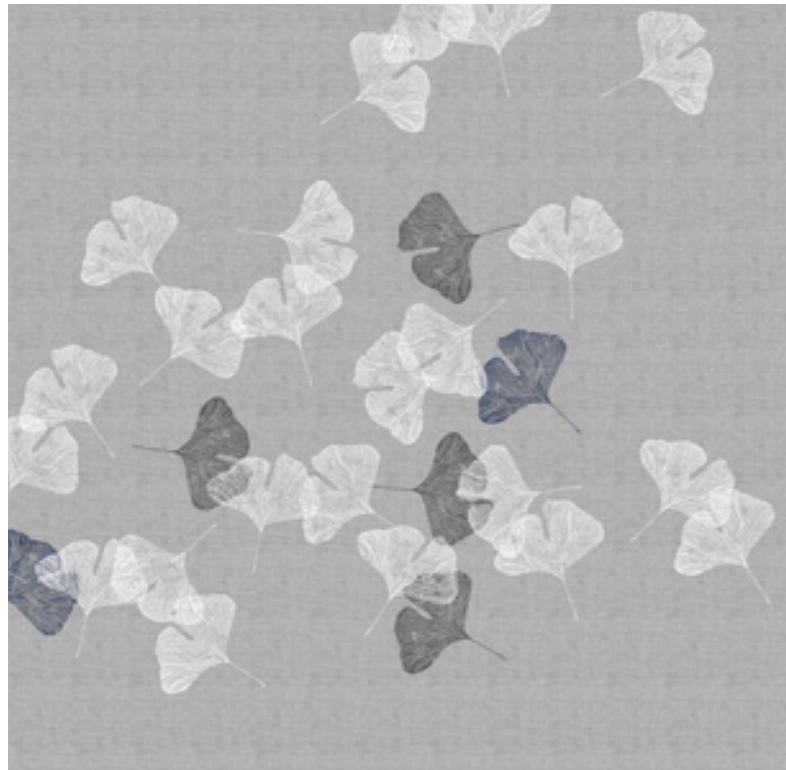
902 - 402



913- 413



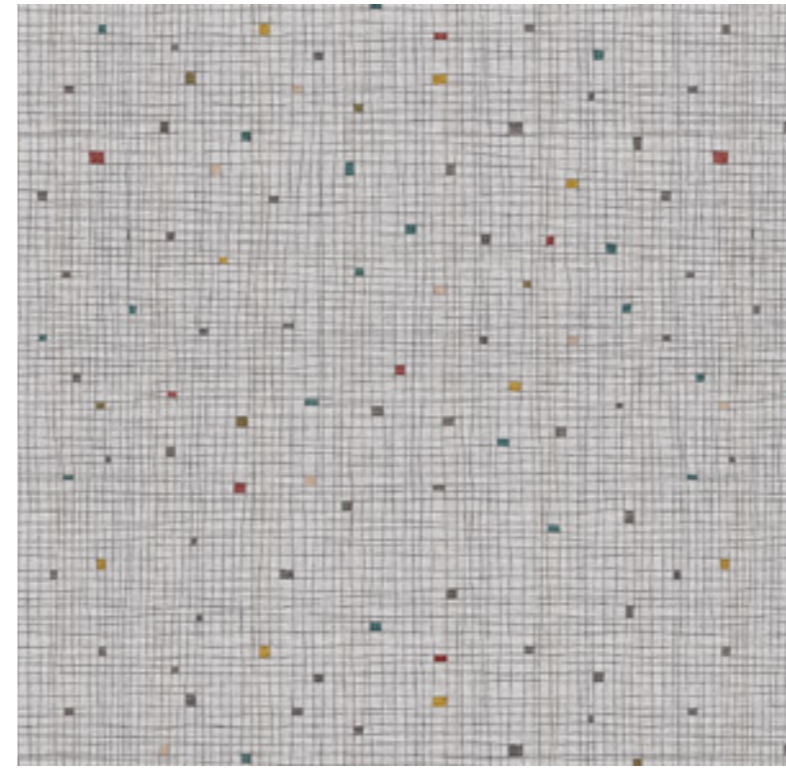
916 - 416



907 - 407



911 - 411



938 - 438



952 - 452

GRAPHIC WOOD

DETTAGLIO GRAFICA RIDOTTO AL 90%
GRAPHIC DETAIL REDUCED TO 90%



GRAFICA STAMPATA SU PANNELLO MATERICO ROVERE
SABBIA CON BORDO ROVERE SABBIA

GRAPHICS PRINTED ON TEXTURED SAND OAK PANEL
WITH SAND OAK EDGE

BOISERIE KREA (CODICE 9100 W)
PENSILE Z - ANTE (CODICE 4100W)

KREA WALL PANELLING (CODE 9100 W)
Z WALL UNIT - DOORS (CODE 4100 W)



9101W / 4101W



9102W / 4102W



9103W / 4103W



9104W / 4104W



9105W / 4105W

NATURAL LIFESTYLE

ROVERE NODATO

La naturalezza di Atlante si esprime attraverso l'autenticità del legno nodato che si abbina al bianco e a delicati effetti materici per riprodurre la varietà della natura. I colori si attenuano, le superfici si fanno materiche e tutto si armonizza in ambienti caldi e accoglienti.

KNOTTED OAK

Atlante's natural appeal is expressed through the authenticity of knotted wood combined with white and with delicate textural effects aimed at reproducing the variety offered by nature. Colours are softened, surfaces are textured and harmony reigns in warm and cosy settings.





ATLANTE UNIT _ A127
L 378 P 22/30/40/47 H 189,5 CM

+PROJECT PLUS
KREA boiserie - wall panelling
PANKA/ELLE totem

Materico opaco bianco gesso, materico
nodato chiaro, materico cemento chiaro
e metallo bianco gesso 121.

Textured matt chalk white, textured light
knotted, light textured cement and chalk
white 121 metal finishes.



Il materico cemento chiaro riveste la boiserie Krea e il pensile, creando una continuità visiva tra gli elementi. Il totem Elle con fianco a giorno è perfetto per gli open space: apre il living verso altri ambienti e aggiunge nell'arredo nuovi spazi contenitivi e decorativi.

Light textured cement coats the Krea wall panelling and the wall unit, creating a visually seamless connection between the various elements. The Elle totem unit with an open shelving end side is perfect for open space rooms: it opens the living room up to other rooms and adds new, decorative storage spaces to the layout.



ATLANTE UNIT _ AT129
L/W 324 P/D 26/40/51 H 184 CM

+PROJECT PLUS
REMIX pensile - wall unit
REGOLO maniglia - handle
RING mensole - shelves

Materico nodato chiaro, materico opaco
bianco gesso e metallo bianco gesso 121.

Light knotted textured, textured matt
chalk white and chalk white 121 metal.



Una composizione di mensole Ring nella stessa finitura materico nodato chiaro crea una libreria "scomposta" sulla parete. Le diverse lunghezze e la disposizione sfalsata danno movimento e la retroilluminazione sostituisce la luce diretta di una lampada con un effetto soffuso.

A set of Ring shelves in the same light knotted textured finish creates a "broken up" wall bookcase configuration. Their different lengths and the offset arrangement adds movement while the rear lighting replaces the direct light of a lamp for a soft, diffused effect.





ATLANTE UNIT_ AT131
L/W 360 P/D 40 H 162 CM

+PROJECT PLUS
SPACE SYSTEM
LUCE - light LED

Materico cemento chiaro, materico
nodato scuro e metallo madreperla 124.

Textured light cement, dark knotted
textured finish and mother of pearl 124
metal.





ATLANTE UNIT_ AT132
L/W 288 P/D 22/30/51 H 247 CM

+PROJECT PLUS
KREA boiserie - wall panelling
GRAPHIC schienale - back panel

Materico opaco madreperla, materico
nodato chiaro, grafica 413 e metallo
antracite 160.

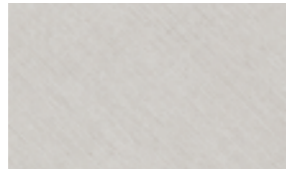
Textured matt mother of pearl, textured
light knotted, graphic design 413 and
anthracite 160 metal.



MT 1/ONE



MT NAM
Noce ambrata
Amber walnut



MT CNV
Canvas

MT PREMIUM MATERICO TEXTURE TEXTURED



MT ALP
Alpaca

LEGNO WOOD



LGN RSB
Rovere sabbia
Sand oak



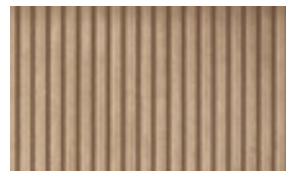
LGN RMK
Rovere moka
Mocha oak



LGN RC
Rovere Carbone
Coal oak



LGN RT
Rovere termocotto
Heat-treated oak



LGN CRSB
Rovere sabbia canettè
Reeded sand oak



LGN CRMK
Rovere moka canettè
Reeded mocha oak

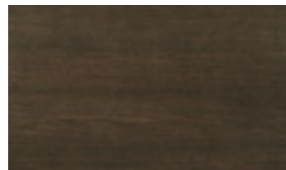


LGN CRC
Rovere carbone canettè
Reeded coal oak

MT PREMIUM MATERICO ESSENZA TEXTURED WOOD



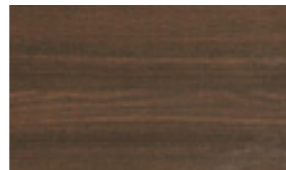
MT RSB
Rovere sabbia
Sand oak



MT RMK
Rovere moka
Mocha oak



MT RC
Rovere Carbone
Coal oak

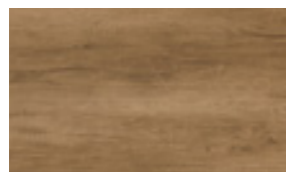


MT RT
Rovere termocotto
Heat-treated oak



MT FO
Frassino oriente
Eastern ash

MT PREMIUM MATERICO NODATO KNOTTED TEXTURED



MT RNC
Nodato chiaro
Light knotted



MT RNS
Nodato scuro
Dark knotted



MT RNN
Rovere nodato naturale
Natural knotted oak

MT PREMIUM MATERICO OPACO MATT TEXTURED



MT OC BG
Bianco Gesso
Chalk White



MT OC MP
Madreperla
Mother of pearl



MT OC ARN
Arena



MT OC BA
Basalto
Basalt



MT OC AN
Antracite
Anthracite

MT PREMIUM MATERICO PORO APERTO OPEN PORE TEXTURED

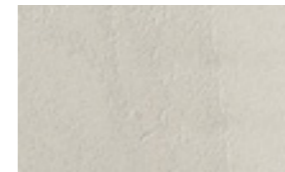


MT PA BG
Bianco gesso
Chalk white

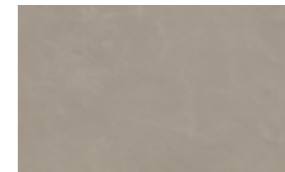


MT PA MP
Madreperla
Mother of pearl

MT PREMIUM MATERICO CEMENTO TEXTURED CEMENT



MT CC
Cemento chiaro
Light cement

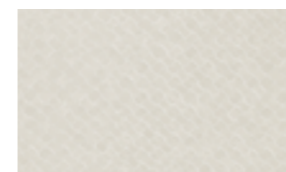


MT CV
Cemento cava
Cava Cement

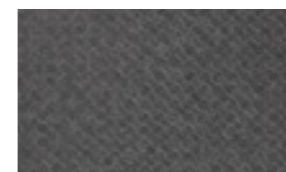


MT CS
Cemento scuro
Dark cement

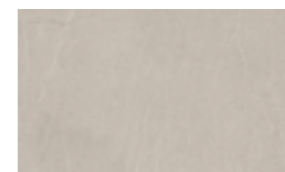
MT SPECIAL MATERICO TEXTURED



MT INT C
Intreccio chiaro
Light intreccio



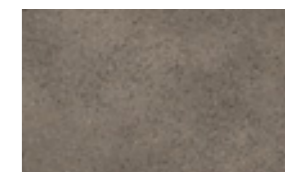
MT INT S
Intreccio scuro
Dark Intreccio



MT PSC
Piasentina chiara
Light Piasentina



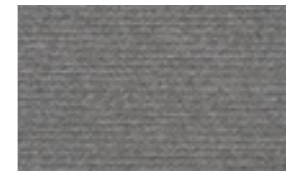
MT PSS
Piasentina scura
Dark Piasentina



MT GR
Graniglia
Gravel grey



MT OBR
Ossido brunito
Burnished oxide



MT PG
Paglia Grigio
Grey straw



MT PB
Paglia Bronzo
Bronze straw

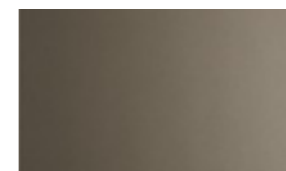


MT MB
Maya bronze

LACCATI METALLIZZATI METALLIC LACQUERS



OCM 090
Bronzo
Bronze



OCM 091
Ghisa
Cast iron



OCM 092
Ottone
Brass

COLORI

LACCATI OPACHI E LUCIDI,
CANETTÈ LACCATO E METALLI,
LACCATI PORO APERTO
VETRO COLORATO LUCIDO E SATINATO.

MATT AND GLOSS LACQUERS,
REDED LACQUERS AND METALS,
OPEN-PORE LACQUERS
GLOSS AND SATIN LACQUERED GLASS.

Esempio con bianco gesso / Example for chalk white



121

COD. 100
laccati opachi e lucidi
matt and gloss lacquers



121

COD. 100
per laccati canettè
reeded lacquers



221

COD. 200
per laccati poro aperto
open-pore lacquers



321

COD. 300
vetri colorati lucidi
gloss lacquered glass

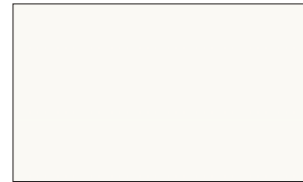


421

COD. 400
vetri colorati satinati
satin lacquered glass

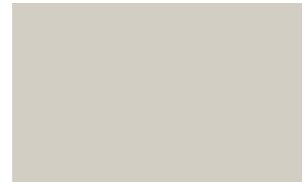
I colori del campionario Tomasella sono di riferimento per laccati lucidi e opachi, laccati canettè, laccati poro aperto, vetro colorato lucido e satinato e metalli.

The Tomasella colour palette can be used for reference purposes for gloss and matt lacquers, reeded lacquers, open-pore lacquers, gloss and satin lacquered glass and metal finishes.



Bianco gesso / Chalk white

121
221
321
421



Platino / Platinum

162
262
362
462



Madreperla / Mother of pearl

124
224
324
424



Canapa / Hemp

150
250
350
450



Ghiaccio / Ice

173
273
373
473



Basalto / Basalt

177
277
377
477



Bromo / Bromite

176
276
376
476



Carta da zucchero / Blue grey

155
255
355
455



Hot / Hot grey

127
227
327
427



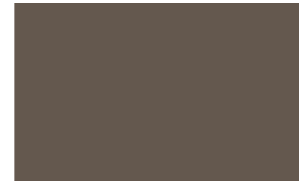
Arena

178
278
378
478



Grigio Piacenza / Piacenza grey

130
230
330
430



Fango / Mud brown

161
261
361
461



Mimetico / Mimetic green

166
266
366
466



Onice / Onyx

167
267
367
467



Mirto / Myrtle

165
265
365
465



Bosco / Forest green

168
268
368
468



Pomice / Pumice

152
252
352
452



Salina / Salt grey

163
263
363
463



Fumo / Smoky grey

174
274
374
474



Lava

175
275
375
475



Salvia / Sage

159
259
359
459



Zafferano / Saffron

158
258
358
458



Rubino / Ruby red

172
272
372
472



Bordeaux / Burgundy

156
256
356
456



Smoke

128
228
328
428



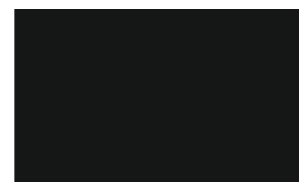
Antracite / Anthracite

160
260
360
460



Ardesia / Slate

164
264
364
464



Nero fumo / Smoke black

131
231
331
431



Curcuma / Turmeric

169
269
369
469



Terracotta

170
270
370
470



Tabasco

171
271
371
471



Pesca / Peach

157
257
357
457

ANTA METROPOLIS

METROPOLIS DOOR



VETRI PER ANTA METROPOLIS METROPOLIS DOOR GLASS OPTIONS



320
Vetro trasparente
Transparent glass

363
Vetro fumè
Smoked glass

Elegante e lineare, l'anta Metropolis è disponibile con telaio in finitura antracite abbinata al vetro fumè o trasparente. Lo spessore verticale diventa presa maniglia per un'apertura pratica e bella. L'anta Metropolis è perfetta per composizioni spalla.

FINITURE TELAIO DOOR FRAME FINISHES

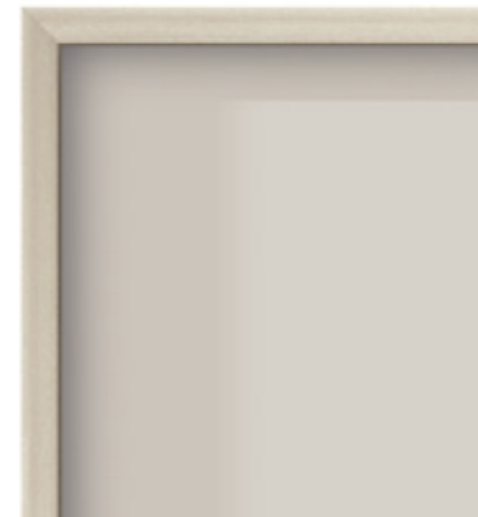


Antracite
Anthracite

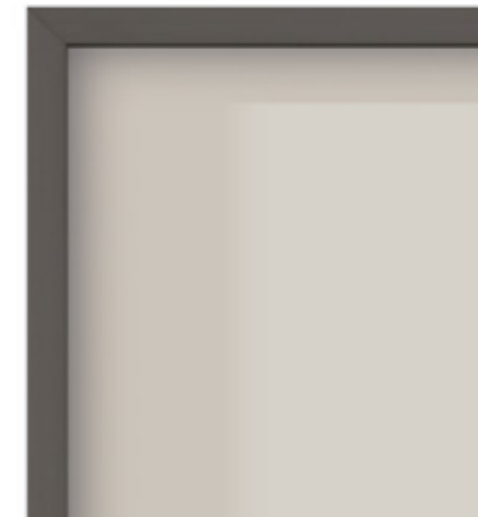
Elegant and linear, the Metropolis door is available with an anthracite finish frame paired with smoked or transparent glass. The vertical profile becomes a beautiful and practical grip edge. The Metropolis door pairs perfectly with open shelving units.

ANTA VETRO

FINITURE ANTA TELAIO
DOOR FRAME FINISHES



Telaio titanio
Titanium frame



Telaio laccato opaco
Matt lacquered frame



*In tutti i colori laccati della gamma Tomasella.

*In all the matt lacquercolours of the Tomasella range.

Páginas de síntesis
Descriptifs
Seitenübersicht

Textos en español,
francés y alemán

Textes en espagnol,
français et allemand

Texte in Spanisch,
Französisch und Deutsch

ROBLE CARBÓN
CHÊNE CHARBON
EICHE KOHLEGRAU

p. 4



ATLANTE UNIT_AT101
L/W 342 P/D 30/51 H 200 CM

+ PROJECT PLUS

SCENARIO trasera para muebles bajos -
panneau mural pour éléments bas -
Rückwand für Unterschränke
DOT colgante - élément haut - Wandschrank
LINK trasera - panneau mural - Rückwand
TRACKS base - piètement- Grundgestell
REGOLO tirador - poignée - Griff

Madera roble carbón, texturizado roble carbón y roble carbón
cannettè, texturizado piasentina oscura. Metal salina 163 y
metal antracita 160.

Bois chêne charbon, texturé chêne charbon et chêne
charbon strié, texturé piasentina foncé. Métal salina 163 et
métal anthracite 160.

Holz Eiche Kohlegrau, Rau Eiche Kohlegrau und Eiche
Kohlegrau Canettè, Rau Piasentina dunkel. Metall Salzgrau
163 und Metall Anthrazit 160.

p. 10



ATLANTE UNIT _ AT102
L/W 378 P/D 32/40/51 H 220/250 CM

+ PROJECT PLUS

SQUARE terminal - terminal -Abschlusselement
TRACKS base - piètement - Grundgestell
VINCI puerta - porte - Tür
ELLE&FILO estante- étagère- Bord

Madera roble carbón y roble carbón cannettè, Texturizado
roble carbón, lacado metalizado hierro fundido 091 y metal
antracita 160.

Bois chêne charbon et chêne charbon strié, texturé chêne
charbon, laqué métallisé fonte 091 et métal anthracite 160.

Holz Eiche Kohlegrau und Eiche Kohlegrau Canettè, Rau
Eiche Kohlegrau y Metallic-Lackierung Gusseisen 091 und
Metall Anthrazit 160.

p. 14



ATLANTE UNIT _ AT103
L/W 324 P/D 32/40/45/51 H 140/250 CM

+ PROJECT PLUS

ELLE&FILO estante - étagère - Bord
REGOLO tirador - poignée - Griff

Texturizado roble carbón, texturizado paja gris
y metal antracita 160.

Texturé chêne charbon, texturé paille gris et métal
anthracite 160.

Rau Eiche Kohlegrau, Rau Stroh Grau und Metall
Anthrazit 160.

p. 18



ATLANTE UNIT _ AT104
L/W 288 P/D 21/51 H 220 CM

+ PROJECT PLUS

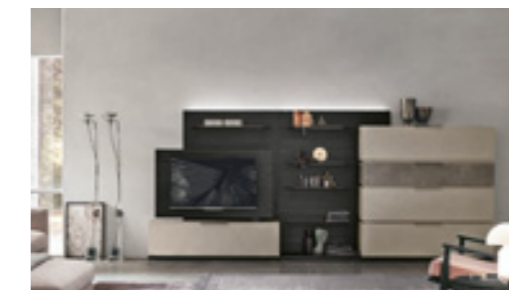
ENCIMERA ESPESOR 6 CM - PLATEAU ÉPAISSEUR 6 CM
ABDECKPLATTE STÄRKE 6 CM
TRACKS base - piètement - Grundgestell
SIR Encimera - plateau - Abdeckplatte

Madera roble carbón, texturizado piasentina oscura
y metal rubí 172.

Bois chêne charbon, texturé piasentina foncé
et métal rubis 172.

Holz Eiche Kohlegrau, Rau Piasentina dunkel
und Metall Rubinrot 172.

p. 22



ATLANTE UNIT _ AT105
L/W 378 P/D 40 H 166 CM

+ PROJECT PLUS

SPACE SYSTEM
PIVOT porta tv - panneau TV - TV-Trägerpaneel

Texturizado gravilla, texturizado cemento cantera,
texturizado roble carbón y metal antracita 160.

Texturé grenaille, texturé ciment carrière, texturé chêne
charbon et métal anthracite 160.

Rau Kies, Rau Zement Cava, Rau Eiche Kohlegrau
und Metall Anthrazit 160.

p. 26 - 29



ATLANTE UNIT_AT106 L/W 378 P/D 24/40/47- H 189,5 CM
ATLANTE UNIT _ AT107 L/W 288 P/D 38,5 H 187

+ PROJECT PLUS

REMIX colgante - élément haut - Wandschrank
BIBLO librería- bibliothèque - Bücherregal
PANKA / TOTEM
FORTEBRACCIO librería - bibliothèque - Bücherregal

Texturizado trenzado claro, texturizado roble carbón
y texturizado cemento claro. FORTEBRACCIO librería_
Texturizado cemento claro, texturizado roble carbón
y metal antracita.

Texturé Intreccio clair, texturé chêne charbon et texturé
ciment clair. FORTEBRACCIO bibliothèque _
Texturé ciment clair, texturé chêne charbon et métal
anthracite.

Rau Geflecht hell, Rau Eiche Kohlegrau und Rau
Zement hell. FORTEBRACCIO Bücherregal_ Rau Zement hell,
Rau Eiche Kohlegrau und Metall Anthrazit.

p. 32



ATLANTE UNIT _ AT108
L/W 360 P/D 22/40 H 203 CM

+ PROJECT PLUS
SQUARE totem - totem- Totem
DOT colgante - élément haut - Wandschrank
VINCI puerta - porte - Tür

Madera roble moka cannettè, texturizado roble moka, lacado metalizado bronce 090 y metal antracita 160.

Bois chêne moka strié, texturé chêne moka, laqué métallisé bronze 090 et métal anthracite 160.

Holz Eiche Mokka Canettè, Rau Eiche Mokka Metallic-Lackierung Bronze 090 und Metall Anthrazit 160.

p. 36



ATLANTE UNIT _ AT109
L/W 342 P/D 24/30/47/51 H 166,5 CM

+ PROJECT PLUS
LINK trasera - panneau mural - Rückwand
PANKA

Madera roble moka y roble moka cannettè, texturizado óxido bruñido, lacado mate salina 163 y metal antracita 160.

Bois chêne moka et chêne moka strié, texturé oxyde bruni, laqué salina 163 mat et métal anthracite 160.

Holz Eiche Mokka und Eiche Mokka Canettè, Rau Oxid brüniert, matt lackiert Salzgrau und Metall Anthrazit 160.

p. 40



ATLANTE UNIT _ AT110
L/W 342 P/D 40 H 182 CM

+ PROJECT PLUS
SQUARE vano - niche - Nischenelement
SIPARIO boiserie - habillage mural - Wandverkleidung
VINCI frente cajón - façade de tiroir - Schubladenfront

Madera roble moka cannettè, texturizado mate arena y metal antracita 160.

Bois chêne moka strié, texturé arena mat et métal anthracite 160.

Holz Eiche Mokka Canettè, Rau matt Beige und Metall Anthrazit 160.

p. 58



ATLANTE UNIT _ AT114
L/W 360 P/D 26/40 H 164 CM

+ PROJECT PLUS
CORNER vano - niche - Nischenelement
RING estante - étagère - Bord

Texturizado nogal ámbar, texturizado canvas, lacado mate basalto 177 y metal basalto 177.

Texturé noyer ambre, texturé canvas, laqué basalte 177 mat et métal basalte 177.

Rau Nussbaum Bernstein, Rau Canvas, matt lackiert Basaltgrau 177 und Metall Basaltgrau 177.

p. 64



ATLANTE UNIT _ AT115
L/W 360 P/D 30/51 H 173 CM

+ PROJECT PLUS
SQUARE vano - niche - Nischenelement
ENCIMERA ESPESOR 6 CM - PLATEAU ÉPAISSEUR 6 CM
ABDECKPLATTE STÄRKE 6 CM
SIR encimera - plateau - Abdeckplatte

Texturizado nogal ámbar, texturizado alpaca, texturizado mate arena y metal antracita 160.

Texturé noyer ambre, texturé alpaca, texturé arena mat et métal anthracite 160.

Rau Nussbaum Bernstein, Rau Alpaca, Rau matt Beige und Metall Anthrazit 160.

p. 68



ATLANTE UNIT _ AT116
L/W 360 P/D 32/40/51 H 183,5/250 CM

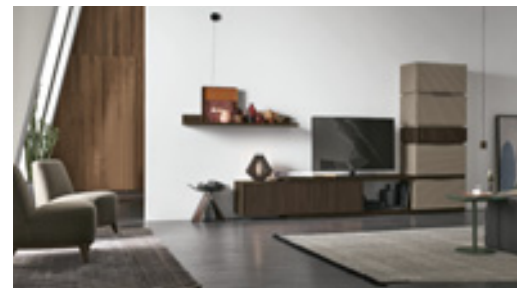
+ PROJECT PLUS
SQUARE terminal - terminal - Abschlusslement
ELLE&FILO estante - étagère - Bord

Texturizado nogal ámbar, texturizado alpaca, lacado mate bosque 168 y metal antracita 160.

Texturé noyer ambre, texturé alpaca, laqué vert forêt 168 mat et métal anthracite 160.

Rau Nussbaum Bernstein, Rau Alpaca, matt lackiert Waldgrün 168 und Metall Anthrazit 160.

p. 44



ATLANTE UNIT _ AT111
L/W 342 P/D 32/40 H 183 CM

+ PROJECT PLUS
VINCI puerta - porte - Tür
ELLE&FILO estante - étagère - Bord

Texturizado paja bronce, madera roble moka, texturizado roble moka y roble moka cannettè.

Texturé paille bronze, bois chêne moka, texturé chêne moka et chêne moka strié.

Rau Stroh Bronze, Holz Eiche Mokka, Rau Eiche Mokka und Eiche Mokka Canettè.

p. 48



ATLANTE UNIT _ AT112
L/W 342 P/D 22/30/40 H 220 CM

+ PROJECT PLUS
KREA LIGHT boiserie - habillage mural - Wandverkleidung
REGOLO tirador - poignée - Griff

Texturizado mate arena, texturizado roble moka y metal arena 178.

Texturé arena mat, texturé chêne moka et métal arena 178.

Rau matt Beige, Rau Eiche Mokka und Metall Beige 178.

p. 52



ATLANTE UNIT _ AT113
L/W 378 P/D 22/30/51 H 174,5 CM

+ PROJECT PLUS
KREA boiserie - habillage mural - Wandverkleidung
GOLA tirador - poignée - Griff

Lacado metalizado hierro fundido 091, metal antracita 160 y texturizado roble moka, lacado mate salina 163.

Laqué métallisé fonte 091, métal anthracite 160 et texturé chêne moka, laqué salina 163 mat.

Metallic-Lackierung Gusseisen 091, Metall Anthrazit 160 und Rau Eiche Mokka, matt lackiert Salzgrau 163.

p. 74



ATLANTE UNIT _ AT117
L/W 342 P/D 30/40 H 186 CM

+ PROJECT PLUS
SQUARE totem - totem- Totem
SIPARIO boiserie - habillage mural - Wandverkleidung
ENCIMERA ESPESOR 6 CM - PLATEAU ÉPAISSEUR 6 CM
ABDECKPLATTE STÄRKE 6 CM

Texturado roble arena, texturizado cemento oscuro y metal antracita 160.

Texturé chêne sable, texturé ciment foncé, métal anthracite 160.

Rau Eiche Sand, Rau Zement dunkel, Metall Anthrazit 160.

p. 78



ATLANTE UNIT _ AT118
L/W 342 P/D 24/30/40/51 H 170 CM

+ PROJECT PLUS
LINK PLUS trasera - panneau mural - Rückwand
DOT colgante - élément haut - Wandschrank

Texturado roble arena, texturizado alpaca, lacado mate ónix 167 y metal antracita 160.

Texturé chêne sable, texturé alpaca, laqué onyx 167 mat et métal anthracite 160.

Rau Eiche Sand, Rau Alpaca, matt lackiert Onyx 167 und Metall Anthrazit 160.

p. 84



ATLANTE UNIT _ AT119
L/W 324 P/D 22/40 H 188 CM

+PROJECT PLUS
SQUARE totem - totem- Totem
ESTANTE ESPESOR 6 CM - PLAN SOCLE ÉPAISSEUR 6 CM
ABDECKPLATTE PLATTE 6 CM

Madera roble arena, texturado roble arena, texturizado alpaca. y lacado mate terracota 170 et métal terracota 170.

Texturé chêne sable, texturé alpaca, laqué et terre cuite 170, mat et métal anthracite 170.

Rau Eiche Sand, Rau Alpaca, und matt lackiert Terracotta 170 und Metall Terracotta 170.

p. 88



ATLANTE UNIT _ AT120
L/W 396 P/D 24/30/40/51 H 167,5 CM

+PROJECT PLUS

LINK trasera - panneau mural- Rückwand
ESTANTE ESPESOR 6 CM - PLAN SOCLE ÉPAISSEUR 6 CM
ABDECKPLATTE PLATTE 6 CM

Texturizado roble arena, texturizado canvas, lacado mate cúrcuma 169, metal cúrcuma 169 y tabasco 171.

Texturé chène sable, texturé canvas, laqué curcuma 169 mat, métal curcuma 169 et métal tabasco 171.

Rau Eiche Sand, Rau Canvas, matt lackiert Kurkuma 169 und Metall Kurkuma 169 und Tabasco 171.

p. 92



ATLANTE UNIT _ AT121
L/W 378 P/D 40 H 150 CM

+PROJECT PLUS

SPACE SYSTEM

Texturizado roble arena, texturizado mate madreperla, texturizado mate antracita, lacado mate cúrcuma 169 y metal antracita.

Texturé chène sable, texturé nacre mat, texturé anthracite mat, laqué curcuma 169 mat et métal anthracite 160.

Rau Eiche Sand, Rau matt Perlmutter, Rau matt Anthrazit, matt lackiert Kurkuma 169 und Metall Anthrazit.

p. 96



ATLANTE UNIT _ AT122
A 378 P 22/30/40/47 H 184 CM

+PROJECT PLUS

KREA boiserie - habillage mural - Wandverkleidung
REGOLO tirador - poignée - Griff

Texturizado mate antracita, texturizado roble arena, texturizado cemento cantera, texturizado cemento oscuro y metal antracita 160.

Texturé anthracite mat, texturé chène sable, texturé ciment carrière, texturé ciment foncé et métal anthracite 160.

Rau matt Anthrazit, Rau Eiche Sand, Rau Zement Cava, Rau Zement dunkel und Metall Anthrazit 160.

p. 110



ATLANTE UNIT _ AT133
L/W 324 P/D 40/51 H 182 CM

+PROJECT PLUS

CORNER vano - niche - Nischenelement
SIPARIO boiserie - habillage mural - Wandverkleidung

Texturizado mate arena, lacado mate bosque 168.

Texturé arena mat, laqué vert forêt 168 mat.

Rau matt Beige, matt lackiert Waldgrün 168.

p. 114



ATLANTE UNIT _ AT134
L/W 360 P/D 40/51 H 184 CM

+PROJECT PLUS

CORNER vano - niche - Nischenelement
ENCIMERA ESPESOR 6 CM - PLATEAU ÉPAISSEUR 6 CM
ABDECKPLATTE STÄRKE 6 CM
VINCI puerta - porte - Tür

Madera roble carbón y roble carbón cannettè, lacado mate bromo 176, metal antracita 160 y metal tabasco 171.

Bois chène charbon et chène charbon strié, laqué brome 176 mat, métal anthracite 160 et métal tabasco 171.

Holz Eiche Kohlegrau und Eiche Kohlegrau Canettè, matt lackiert Bromo 176, Metall Anthrazit 160 und Metall Tabasco 171.

p. 118



ATLANTE UNIT _ AT135
L/W 432 P/D 26/40 H 144 CM

+PROJECT PLUS

VINCI frente cajón - façade de tiroir - Schubladenfront
RING estante - étagère - Bord

Texturizado roble carbón, lacado mate tabasco 171 cannettè. Metal tabasco 171.

Texturé chène charbon, laqué tabasco 171 mat strié. Métal tabasco 171.

Rau Eiche Kohlegrau, matt lackiert Tabasco 171 Canettè. Metall Tabasco 171.

p. 99 - 100



ATLANTE UNIT _ AT123 L/W 288 P/D 22 H 135 CM
ATLANTE UNIT _ AT124 L/W 342 P/D 30/40/51 H 220 CM

+PROJECT PLUS

KREA boiserie - habillage mural - Wandverkleidung
RASTER elemento de metal - élément en métal
REGOLO tirador - poignée - Griff

Texturizado cemento cantera, texturizado mate antracita, texturizado roble arena y metal antracita 160.
KREA boiserie_ Texturizado roble arena y metal blanco yeso 121.

Texturé ciment carrière, texturé anthracite mat, texturé chène sable et métal anthracite 160.

KREA habillage mural_ Texturé chène sable et métal blanc craie 121.

Rau Zement Cava, Rau matt Anthrazit, Rau Eiche Sand und Metall Anthrazit 160. KREA Wandverkleidung _ Rau Eiche Sand und Metall Gipsweiß 121.

p. 102



ATLANTE UNIT _ AT125
L/W 360/234 P/D 18/30/40/47/51 H 202 CM

+PROJECT PLUS

TETRIS elemento de metal - élément en métal
Element aus Metall
REGOLO tirador - poignée - Griff
PANKA

Texturizado mate madreperla, madera roble arena, texturizado roble arena, metal antracita 160 y madreperla 124.

Texturé nacre mat, bois chène sable, texturé chène sable, métal anthracite 160 et nacre 124.

Rau matt Perlmutter, Holz Eiche Sand, Rau Eiche Sand, Metall Anthrazit 160 und Perlmutter 124.

p. 107



ATLANTE UNIT _ AT126
L/W 378 P/D 24/30/40/47 H 184 CM

+PROJECT PLUS

REMIX colgante - élément haut - Wandschrank
BIBLO librerías - bibliothèque - Bücherregale
MEDIA BOX mueble bajo - élément bas- Unterschrank
PANKA

Lacado mate hielo 173 y madera roble arena.

Laqué givre 173 mat et bois chène sable.

Matt lackiert Eis 173 und Holz Eiche Sand.

p. 120



ATLANTE UNIT _ AT136
L/W 391 P/D 38,5/40/47 H 189,5 CM

+PROJECT PLUS

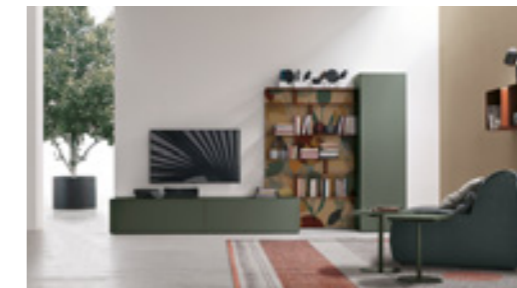
ELLE totem - totem - Totem
PANKA
FORTEBRACCIO librería - bibliothèque - Bücherregal

Texturizado mate basalto, texturizado mate antracita, lacado cúrcuma 169 y metal cúrcuma 169.

Texturé basalte mat, texturé anthracite mat, laqué curcuma 169 et métal curcuma 169.

Rau matt Basaltgrau, Rau matt Anthrazit, lackiert Kurkuma 169 und Metall Kurkuma 169.

p. 124



ATLANTE UNIT _ AT137
L/W 342 P/D 22/40 H 182 CM

+PROJECT PLUS

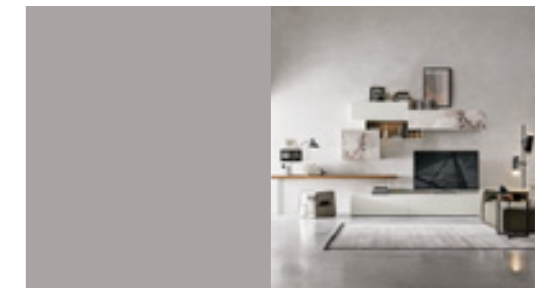
KREA boiserie - habillage mural - Wandverkleidung
GRAPHIC trasera - panneau mural - Rückwand

Lacado mate bosque 168, roble arena con decoración 9101W. Metal tabasco 171.

Laqué vert forêt 168 mat, chène sable avec décor graphique 9101W. Métal tabasco 171.

Matt lackiert Waldgrün 168, Eiche Sand mit Grafikmuster 9101W. Metall Tabasco 171.

p. 127



ATLANTE UNIT _ AT138
L/W 396 P/D 30/40/47/51 H 218 CM

+PROJECT PLUS

Z elemento - élément - Element
SOBRE ESCRITORIO - PLATEAU DE BUREAU
SCHREIBPULTPLATTE
GRAPHIC puerta - porte - Tür

Texturizado mate blanco yeso, texturizado con nudos claro, decoración 4001 y metal blanco yeso 121.

Texturé blanc craie mat, texturé chène à nœuds clair, décor graphique 4001 et métal blanc craie 121.

Rau matt Gipsweiß, Rau astig hell, Grafikmuster 4001 und Metall Gipsweiß 121.

p. 128



ATLANTE UNIT _ AT139
L/W 306 P/D 24/40/51 H 180 CM

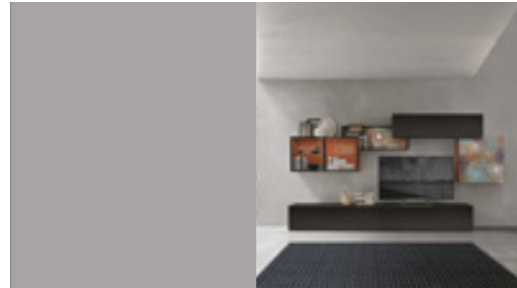
+PROJECT PLUS
BIBLO librerías - bibliothèque - Bücherregale
METROPOLIS puerta - porte - Tür
GRAPHIC puerta - porte - Tür

Texturizado mate antracita, decoración 4500, texturizado cemento claro y lacado mate azul niño 155.

Texturé anthracite mat, décor graphique 4500, texturé ciment clair et laqué bleu pastel 155 mat.

Rau matt Anthrazit, Grafikmuster 4500, Rau Zement hell und matt lackiert Pastellblau 155.

p. 131



ATLANTE UNIT _ AT140
L/W 342 P/D 30/40/51 H 180 CM

+PROJECT PLUS
Z elemento - élément - Element
GRAPHIC puerta - porte - Tür
METROPOLIS puerta - porte - Tür

Texturizado roble carbón, decoración 9003, metal antracita 160 y lacado mate tabasco 171.

Texturé chêne charbon, décor graphique 9003, métal anthracite 160 et laqué tabasco 171 mat.

Rau Eiche Kohlegrau, Grafikmuster 9003, Metall Anthrazit 160 und matt lackiert Tabasco 171.

ROBLE CON NUDOS
CHÊNE À NŒUDS
RAU ASTIG

p. 134



ATLANTE UNIT _ AT128
L/W 378 P/D 30/40/47 H 189,5 CM

+PROJECT PLUS
DIAGONAL colgante - élément haut - Wandschrank
TOTEM/PANKA

Lacado mate salina 163, metal antracita 160, texturizado piasentina oscura y madera roble con nudos.

Laqué salina 163 mat, métal anthracite 160, texturé piasentina foncé et bois chêne à nœuds.

Matt lackiert Salzgrau 163, Metall Anthrazite 160, Rau Piasentina dunkel und Holz Eiche astig.

p. 136



ATLANTE UNIT _ AT127
L 378 P 22/30/40/47 H 189,5 CM

+PROJECT PLUS
KREA boiserie - habillage mural - Wandverkleidung
PANKA/ELLE totem - totem- Totem

Texturizado mate blanco yeso, texturizado con nudos claro, texturizado cemento claro y metal blanco yeso 121.

Texturé blanc craie mat, texturé chêne à nœuds clair, texturé ciment clair et métal blanc craie 121.

Rau matt Gipsweiß, Rau astig hell, Rau Zement hell und Metall Gipsweiß 121.

p. 140



ATLANTE UNIT _ AT129
L/W 324 P/D 26/40/51 H 184 CM

+PROJECT PLUS
REMIX colgante - élément haut - Wandschrank
REGOLO tirador - poignée - Griff
RING estante - étagère - Bord

Texturizado con nudos claro, texturizado mate blanco yeso y metal blanco yeso 121.

Texturé chêne à nœuds clair, texturé blanc craie mat et métal blanc craie 121.

Rau astig hell, Rau matt Gipsweiß und Metall Gipsweiß 121.

p. 144



ATLANTE UNIT _ AT130
L/W 360 P/D 30/45/51 H 184 CM

+PROJECT PLUS
REGOLO tirador - poignée - Griff
ELLE estante - étagère - Bord
PUERTA CON MARCO CRISTAL CANNETTÈ -
PORTE À CADRE EN VERRE STRIÉ

Texturizado mate blanco yeso y texturizado con nudos claro, metal blanco yeso 121 y cristal cannettè.

Texturé blanc craie mat et texturé chêne à nœuds clair, métal blanc craie 121 et verre strié.

Rau matt Gipsweiß und Rau astig hell, Metall Gipsweiß 121 und Glas Canettè.

p. 146



ATLANTE UNIT_ AT131
L/W 360 P/D 40 H 162 CM

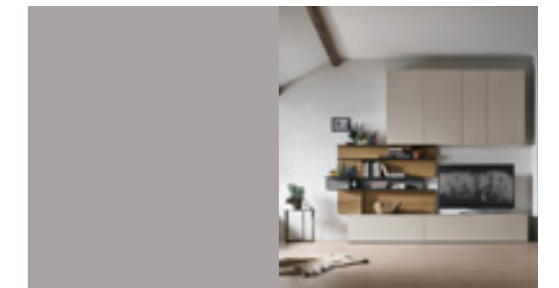
+PROJECT PLUS
SPACE SYSTEM
LUZ LED- ÉCLAIRAGE À LEDS - LED-BELEUCHTUNG

Texturizado cemento claro, texturizado con nudos oscuro y metal madreperla 124.

Texturé ciment clair, texturé chêne à nœuds foncé et métal nacre 124.

Rau Zement hell, Rau astig dunkel und Metall Perlmutt 124.

p. 149



ATLANTE UNIT _ AT132
L/W 288 P/D 22/30/51 H 247 CM

+PROJECT PLUS
KREA boiserie - habillage mural - Wandverkleidung
GRAPHIC trasera - panneau mural - Rückwand

Texturizado mate madreperla, texturizado con nudos claro, decoración 413 y metal antracita 160.

Texturé nacre mat, texturé chêne à nœuds clair, décor graphique 413 et métal anthracite 160.

Rau matt Perlmutt, Rau astig hell, Grafikmuster 413 und Metall Anthrazit 160.

ITALIER

www.italier.cz | obchod@italier.cz | +420 774 431 196