

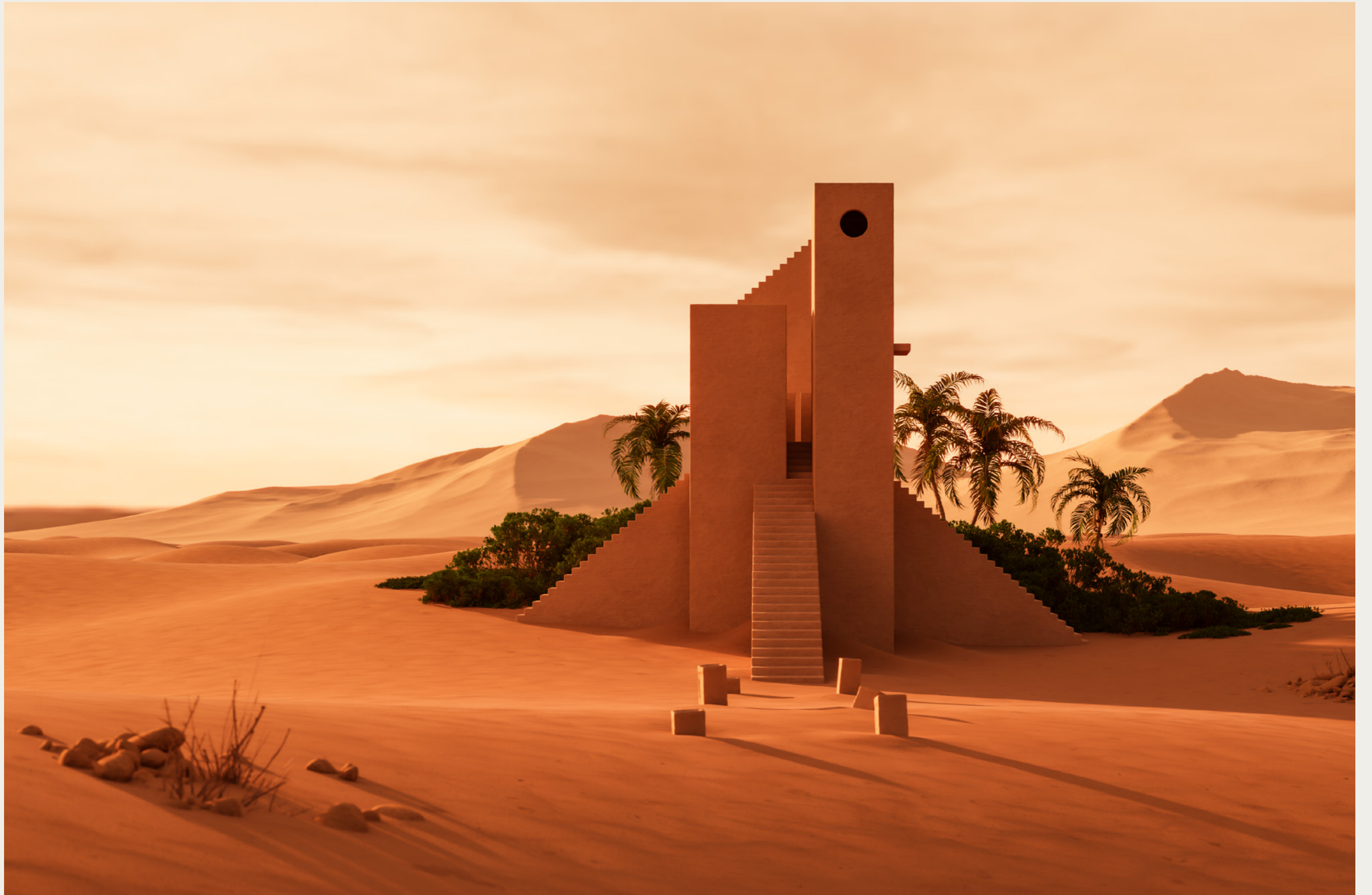
ARTE[®]

wallcoverings for the ultimate in refinement
de ultieme verfijning in muurbekleding
le revêtement mural dans sa quintessence
Wandbekleidung für raffinierte Eleganz

With over forty years' experience, Arte is well-known in the world of luxury interiors. Nowadays our sophisticated wallcovering is used all over the world, which is something we are really proud of. Every year we create an exquisite range of new collections which are designed in-house by a team of experienced designers. The emphasis is always on quality and innovation.



DESERT DREAMS





In the silence of the desert the wind whispers softly,
the warm sand forms high dunes, the red evening sun
disappears into the night and billions of stars twinkle in
the sky...

Will you join us on an adventure? Discover the different
designs of wallcovering with the intriguing facets that the
desert has to offer as a common thread. Desert Dreams
takes you on an unlikely journey through the Sahara where
desert sand, traditional textiles, the sun, colourful oases
and all other elements of nature served as inspiration for
the choices of materials, colours and textures.



Osmanthus • Geloma 54562

Geloma is a refined jacquard-woven textile in glossy multicolour threads. The dancing horizontal lines create a playful effect on the one hand, while the dark background and warp provide relief on the other. This design owes its name to the word 'loom', which in turn comes from the Old English word Geloma.



Les Forêts • Tinto 48001



Osmanthus • Geloma 54562



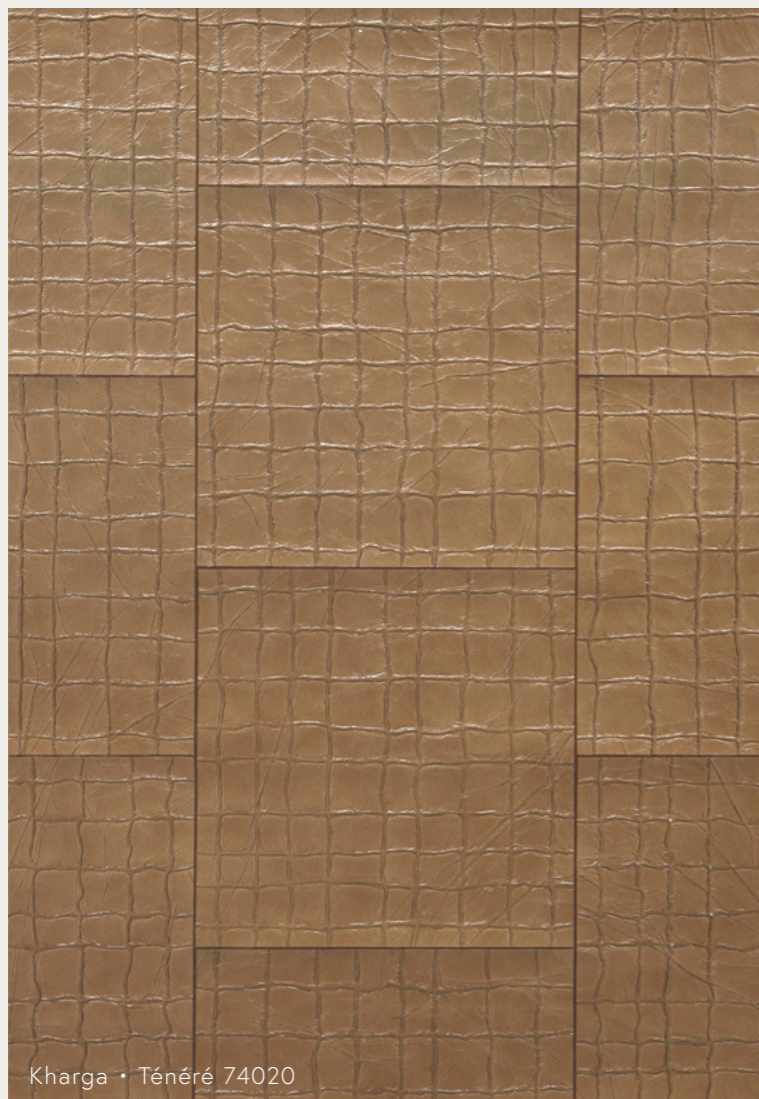


Osmanthus • Tatami 54522



Osmanthus • Tatami 54520

Tatami means folded and stacked in Japanese, referring to the way in which traditional Japanese floor mats are manufactured. The substrate of this design is a playful reference to this authentic technique. The shiny geometric embroidery perfectly comes into its own against this background.



Kharga • Ténéré 74020

Ténéré, an area in the southern Sahara, is known as one of the driest deserts in the world. The dehydrated and cracked desert soil forms the inspiration for this lacquered imitation leather.



Kharga • Ténéré 74024





Kharga • Bayuda 74042

The ochre sandbanks in the Sudanese Bayuda Desert are dotted with rocks. Here, gold prospectors tried their luck in the shallow mines. The whimsical lines combined with the sparkling gold in this pattern are clear references to their source of inspiration.



Kharga • Barkhan 74000

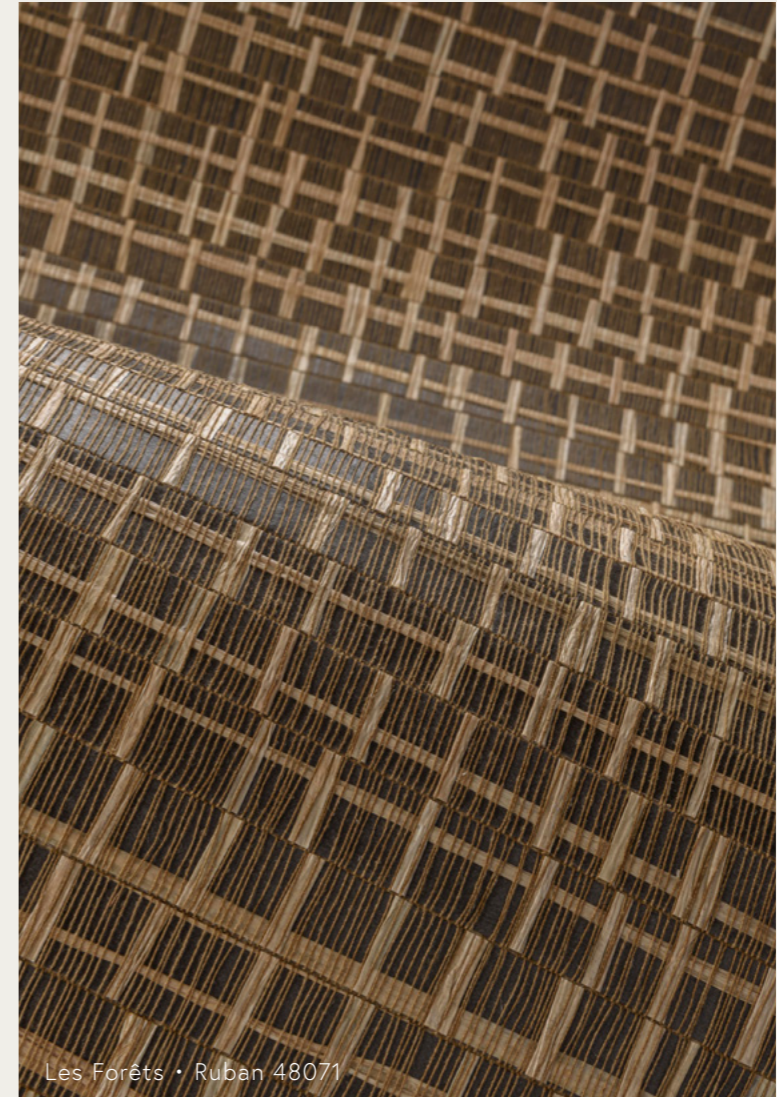




Original work of art
Babylon · Between Rivers



Les Forêts • Éclat 48046



Les Forêts • Ruban 48071

The Ruban design plays with different thicknesses. Narrow raffia strips are glued by hand to a non-woven backing, which in turn is cut into wider strips. These strips are woven into a whole using an ultra-fine thread, ensuring a successful interplay of narrow and wide.



Antigua • Pentagono 33042

Pentagono has the soft, tactile appeal of luxurious bouclé. The fabric was designed with a graphic pattern of pentagons. This sleek design creates an interesting contrast with the typical casual look of bouclé.



Babylon • Terracotta 97013



Kharga • Atacama 74014



This luxurious bouclé fabric contains real alpaca wool. Alpacas live on the high plains of the Andean Mountains, including the Atacama Desert in Chile. This tactile design has a direct link to the traditional costumes of the inhabitants of this region.

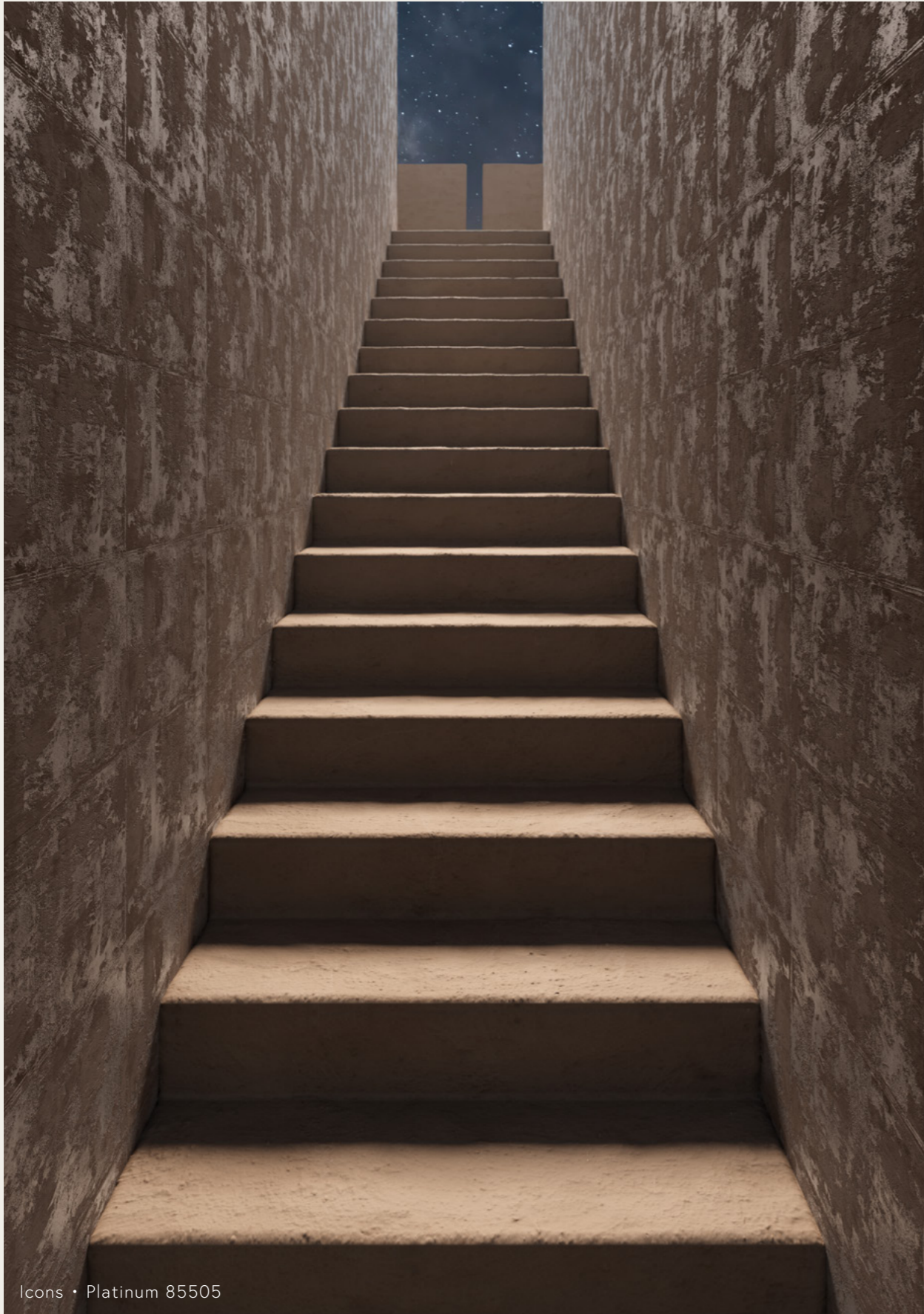




Alaya • Katan Silk 11514

An incredibly detailed impression of Katan Silk, a very light, luxurious type of silk. The minor irregularities that are typical of this fabric are also found here.





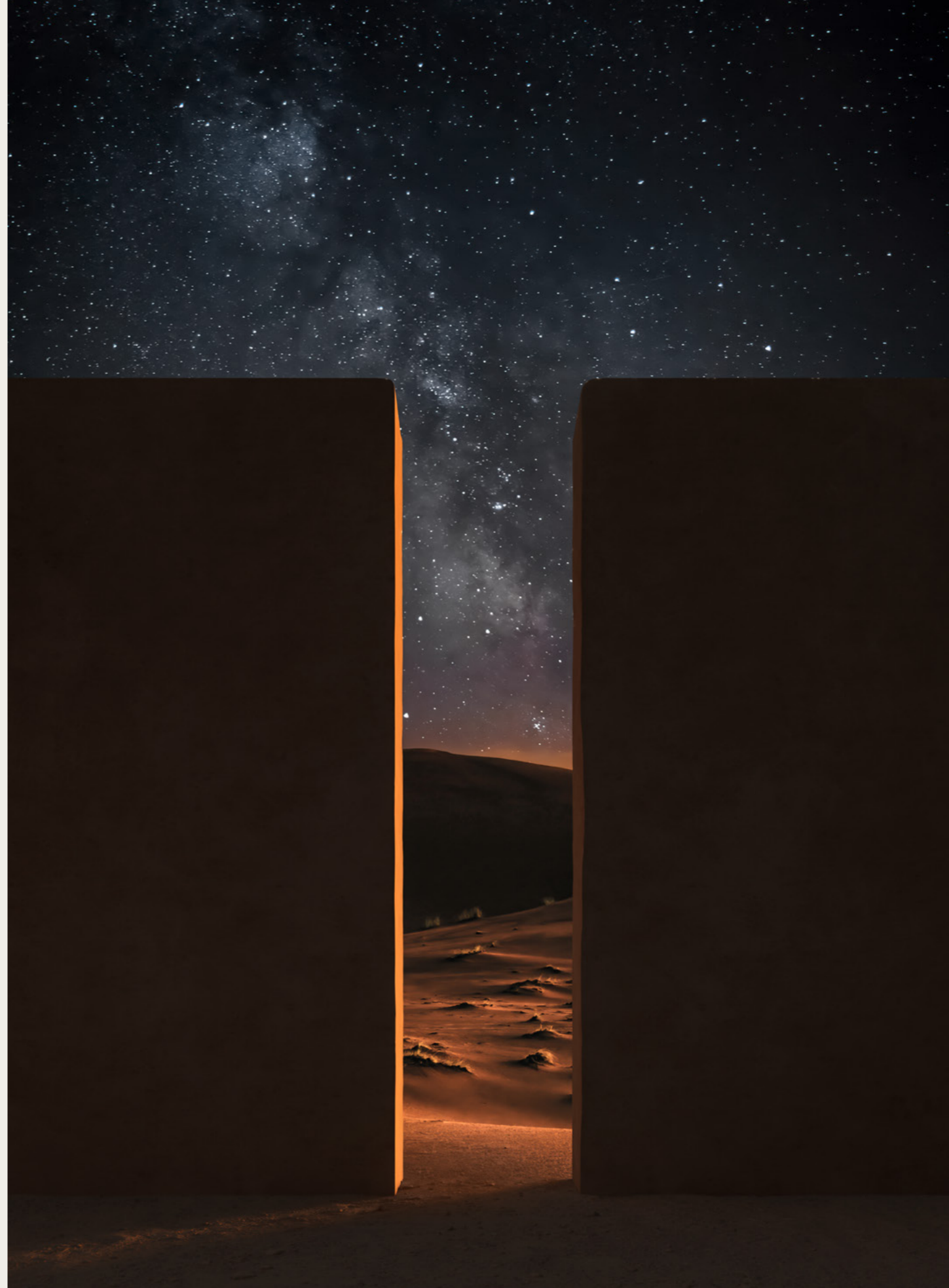
Icons • Platinum 85505





Khargā • Gobi 74030

As soon as night falls, millions of stars appear in the clear sky of the Gobi Desert, one of the coldest deserts in the world. The comparison with a magnificent starry sky is unmistakable. The contrast of the glittering dots with the deep or soft colours literally elevates this pattern to higher spheres.



COLLECTIONS SPRING 2023

ALAYA

This wallcovering will transport you back in time and take you on an adventurous journey along the Silk Road. Silk plays the leading role in the collection, alternating with impressive decors based on views of the Himalayas.

Patterns

Banyan • Katan Silk • Manali • Saranda

ANTIGUA

Each of the designs has a warm textile look and feel; some with the pure appearance of linen, while others have the tactile nature of bouclé. They have all been given an authentic patina, an extra layer that emphasises the beauty of these timeless pieces.

Patterns

Pentagono • Ritorto • Stagionato
Tintura • Tropicali

BABYLON

Cuneiform script was created by people carving and drawing in clay tablets and rock walls. And it is this technique of sculpting in clay that serves as inspiration for the Babylon collection. You could easily call the designs works of art: large clay tablets are shaped by hand with extreme precision and then translated into detailed creations that resemble plasterwork.

Patterns

Adobe • Between Rivers • Medjoul • Terracotta

KHARGA

The Kharga oasis was an important stop on the ancient trade route that connected various different oases in Egypt. This tour through the Sahara brings every aspect of the desert to life in the Kharga collection, from the dazzling afternoon sun to the star-studded sky at night and from the shapes of the dunes to the fine structure of desert sand. Even the details and materials used in the traditional carpets and robes of nomads are featured.

Patterns

Atacama • Barkhan • Bayuda • Gobi
Moire • Ténéré • Zerzura

LES FORÊTS

As the name of the collection suggests, Les Forêts is an ode to the mysterious atmosphere of a dense forest. Natural materials such as bark, raffia and wood, combined with forest patterns, instantly whisk you off on an imaginary walk through the woods.

Patterns

Ajoura • Dioré • Éclat • Infini
Ruban • Tinto • Tresse

OSMANTHUS

This collection exudes refinement and luxury, not only through the sophisticated embroidery technique but also due to the use of natural materials such as sisal, cotton and hemp. The aesthetic aspect and purity of nature are in perfect balance. The materials, designs and colours in this collection refer to the Far East.

Patterns

Chasu • Gardens of Okayama • Geloma
Kudzu • Line • Sambe • Tatami



For all interior images and designs visit our website

arte-international.com

