

# BONALDO

## Lupino

Designer: **Mauro Lipparini**

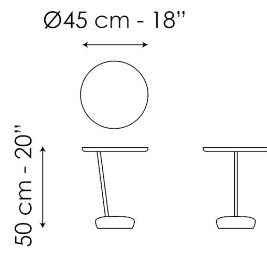
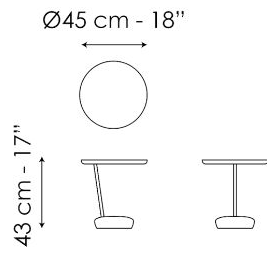


The table tops are made from discs of ash wood, supported by a lead-painted metal pipe. All of this rests on a base in marble or cement, which evokes the solid, stable shape of a rock. The lasting image of the Lupino small modern coffee

table is one of asymmetrical contrast between the imposing base, the sleek body and the disc that forms the table top, emphasized by the elegant matching of different materials.



# Data sheet



## Lupino H 43

Width: 45cm

Depth: 45cm

Height: 43cm

## Lupino H 50

Width: 45cm

Depth: 45cm

Height: 50cm

# Finishes

## TOP

### Wood



**Solid wood**  
Walnut painted ash



**Solid wood**  
Coal ash



**Solid wood**  
Natural ash

---

## ROD

### Plus Metal



**Painted metal**  
Mat lead

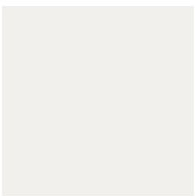


**Painted metal**  
Mat bronze

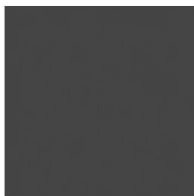


**Painted metal**  
Mat pearl gold

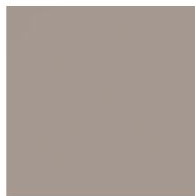
### Metal



**Painted metal**  
Mat white



**Painted metal**  
Supreme anthracite



**Painted metal**  
Mat dove grey

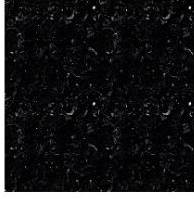


# BASE

## Marble



**Marble**  
Carrara



**Marble**  
Marquinia

## Concrete



**Composite cement**  
Anthracite grey



**Composite cement**  
White

---

Materials, fabrics, leathers, colors and finishes are approximate and may slightly differ from actual ones. You can find the complete collection of Bonaldo fabrics and leathers on the website

