



TRAME D'ARTISTA

EXCLUSIVE RUGS AND OUTDOOR FABRICS





TRAME D'ARTISTA

*In collaboration with*



EXCLUSIVE RUGS AND OUTDOOR FABRICS

# OUTDOOR RUGS

## BETWEEN HEAVEN AND EARTH AN ENCHANTING STORY

It is the threads that run between heaven and earth that lead us on an unexpected path, to the source of wonder. The collection of designer carpets designed by **Maison Pierre Frey** for DFN are a real ode to life.

The expression of an excellent manufacturer. Beautiful to look at and soft to touch. Works from a person's wish list that lie between art and design, where creativity is free to express itself. Flat-surface carpets, patiently hand-tufted by skilled craftsmen using ancient techniques and made with Premium Acrylic yarn resistant to abrasion and weather conditions. The carpets have a great appeal and interior touch and are available in 16 colours, which can be customised for different sizes and designs. A tribute to beauty and the magical power of the imagination. An infinite space, the carpet, within the confines of an imaginary room, giving an outdoor setting. Because the elegance of living is always an unforgettable moment of details that capture a dream.





**ARUBA**

AF10  
Moutarde

AF03  
Ivory





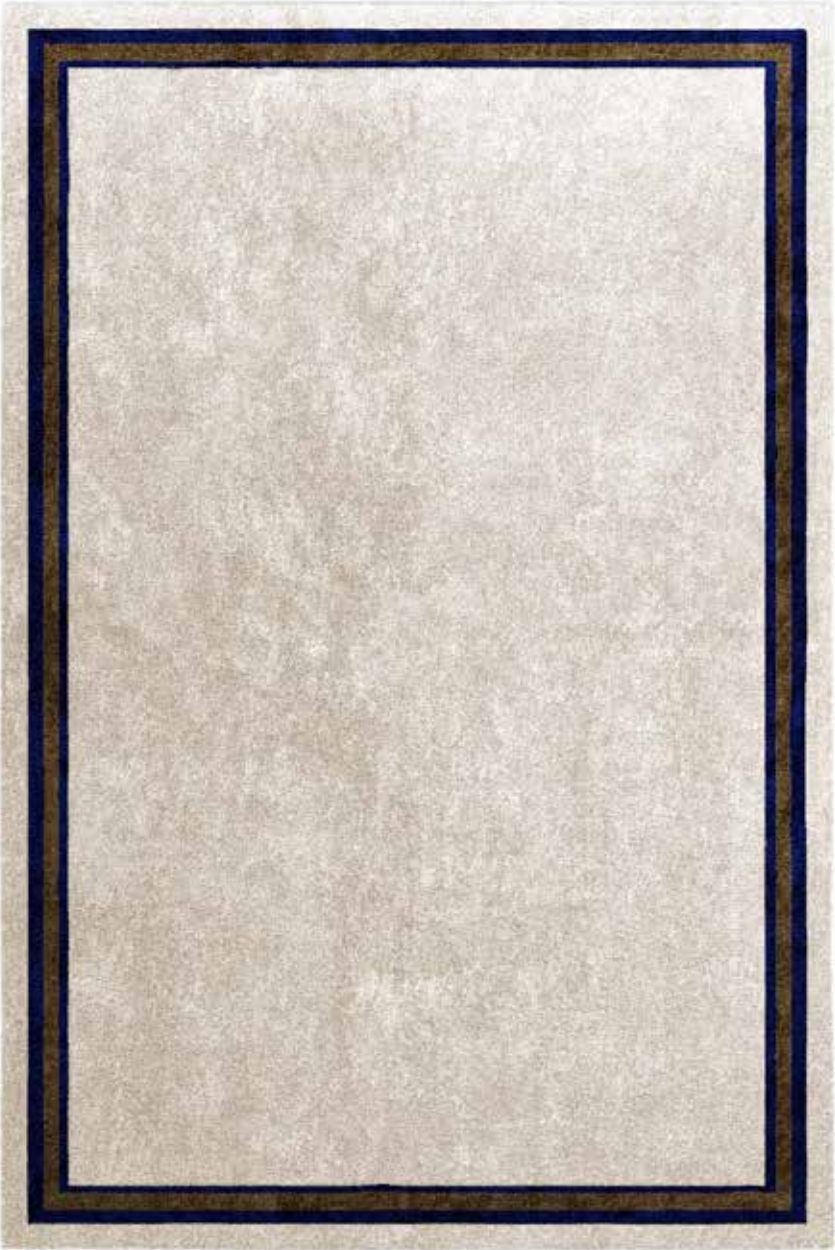
**ARUBA FRAME**

AF03  
Ivory

AF10  
Moutarde







**BALI**

AF03

Ivory

AF33

Nuit

AF16

Taupe

Bali





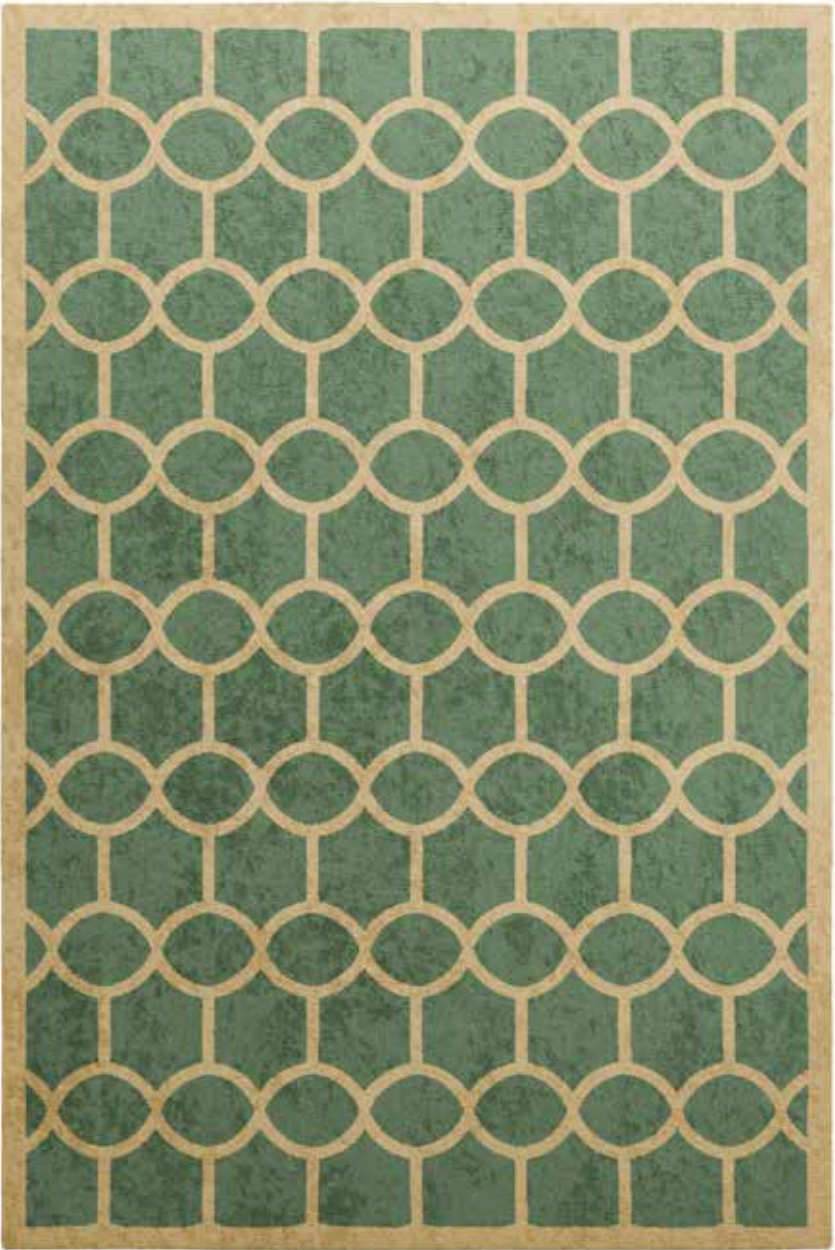
# **LA CASA DEI LIMONI FRAME**

AF03  
Ivory

AF18  
Tapir







**LA CASA DEI LIMONI MONOGRAM**

AF23  
Sage

AF05  
Powder





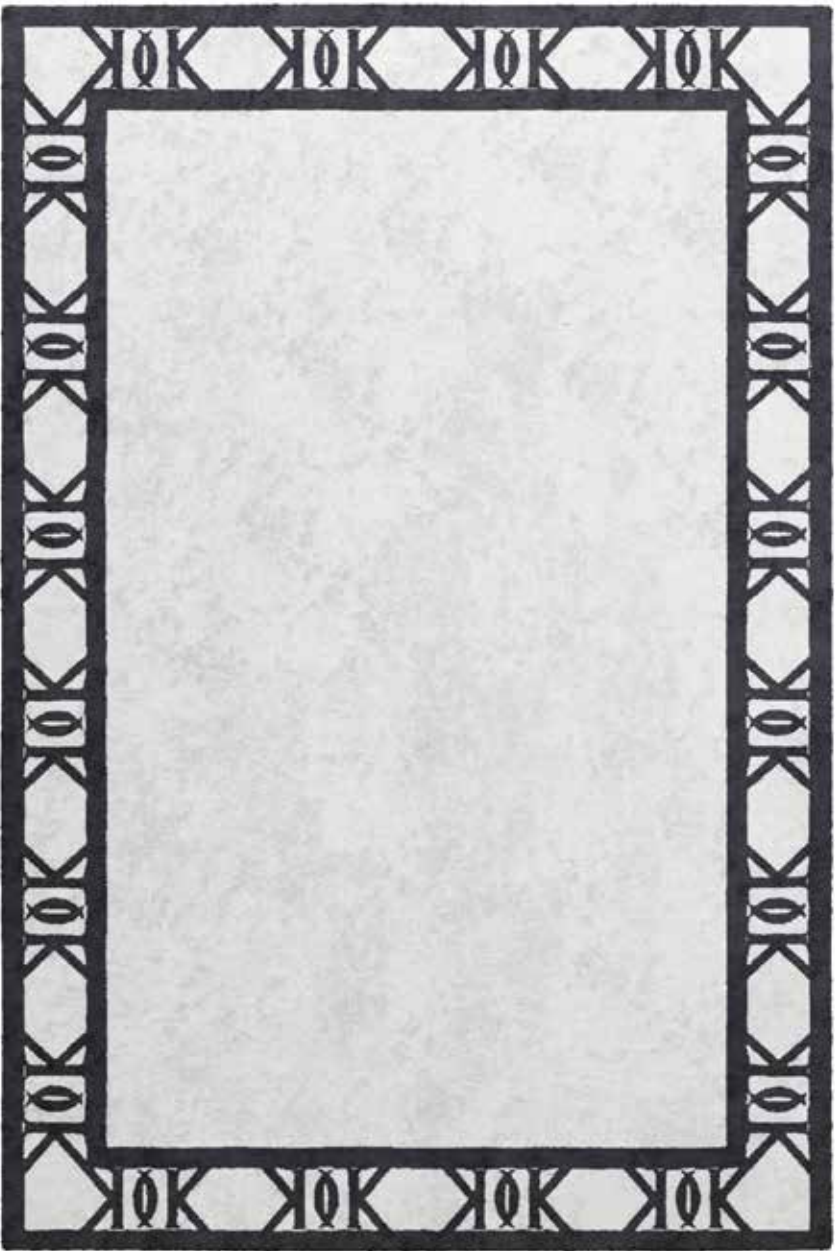
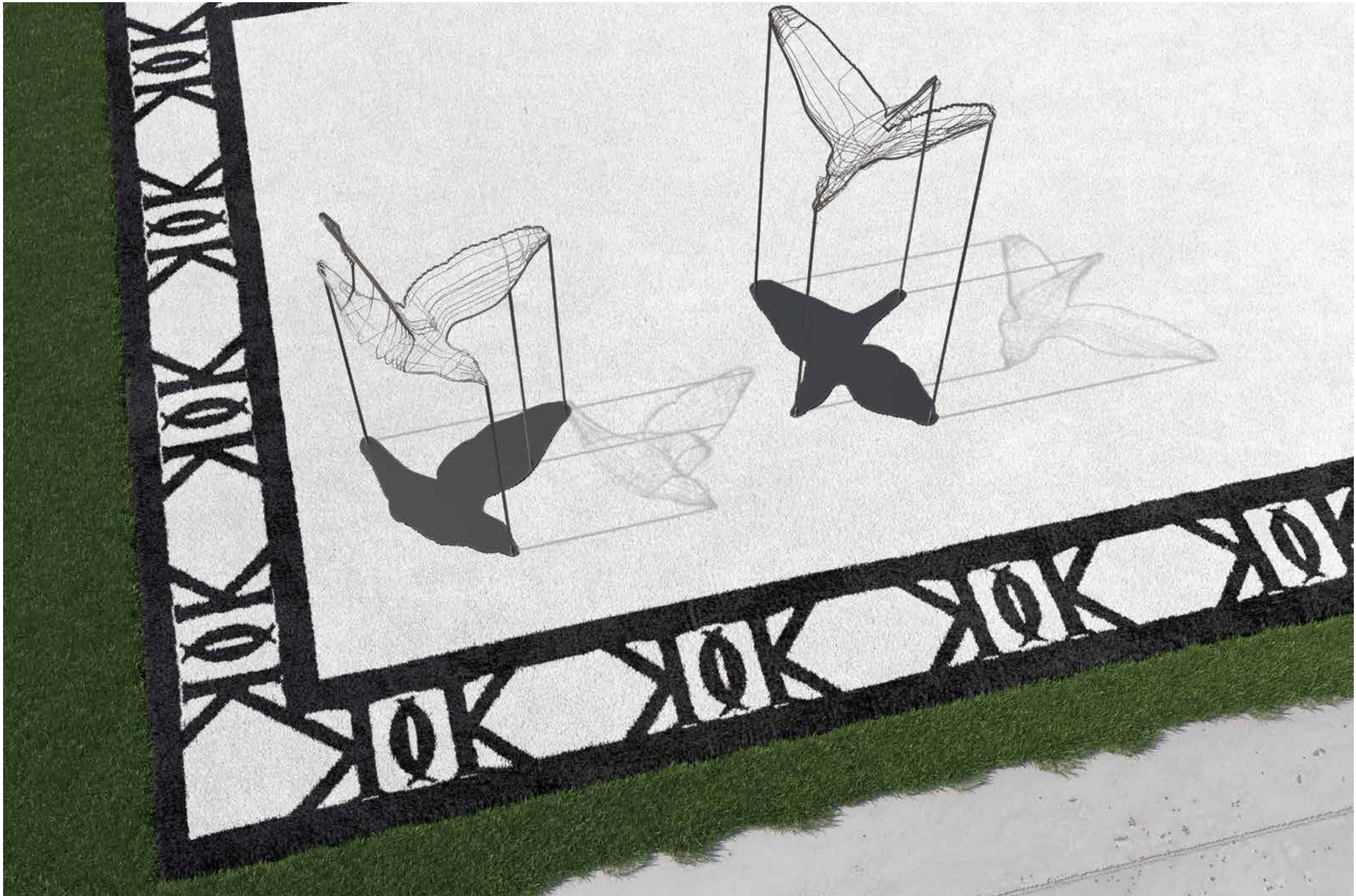
**CRETA**

AF03  
Ivory

AF07  
Sand





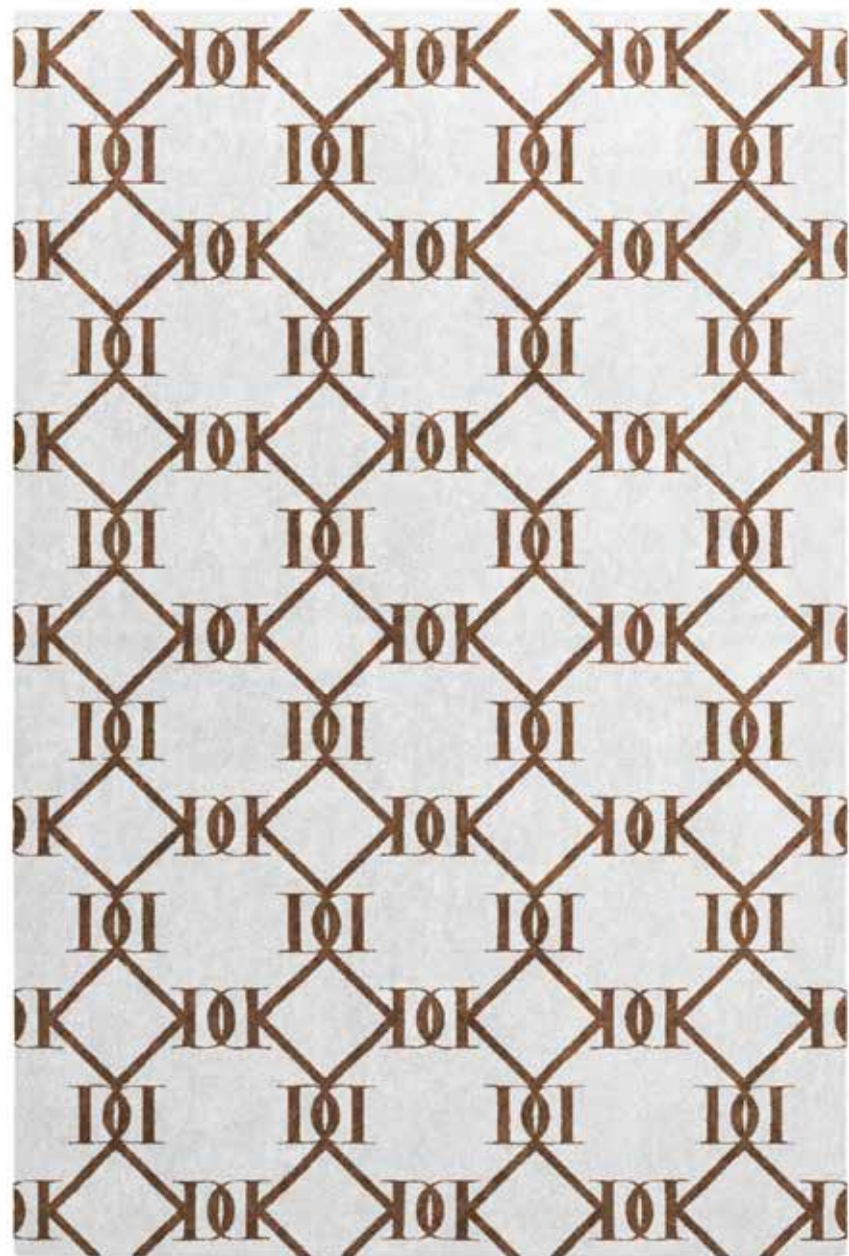


**DOLCEFARNIENTE FRAME**

AF02  
Milk

AF21  
Steel





# **DOLCEFARNIENTE CHAIN**

AF02  
Milk

AF16  
Taupe







**DOLCEFARNIENTE TIME**

AF03  
Ivory

AF29  
Canard





**FIJI**

AF03  
Ivory

AF24  
Fiji





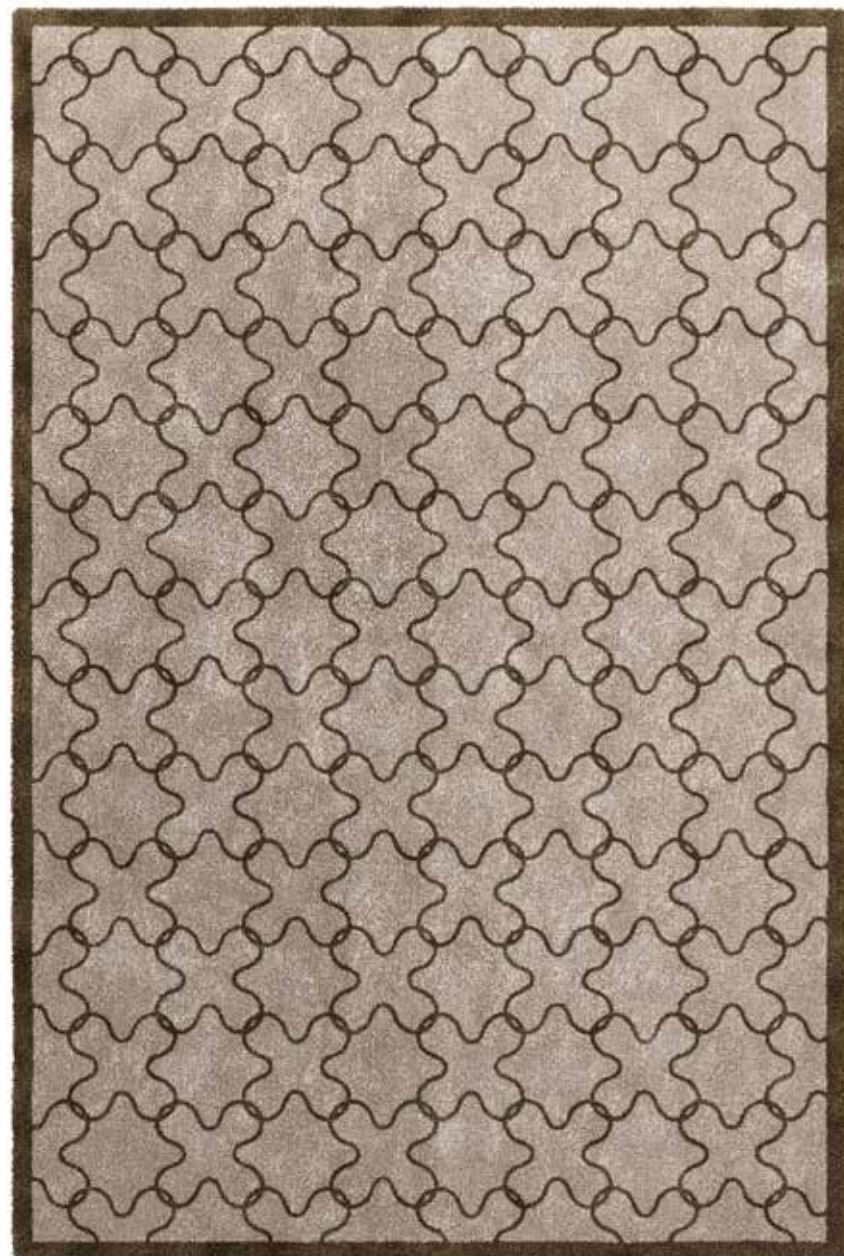


**MAURITIUS**

AF02  
Milk

AF32  
Blue





**SAMUELE MAZZA MONOGRAM**

AF04  
E cru

AF17  
Ficelle







**SAMUELE MAZZA FRAME**

AF02  
Milk

AF22  
Black



YARN COLOR REFERENCE



AF02  
Milk



AF03  
Ivory



AF04  
Ecrú



AF05  
Powder



AF07  
Sand



AF10  
Moutarde



AF16  
Taupe



AF17  
Ficelle



AF18  
Tapir



AF21  
Steel



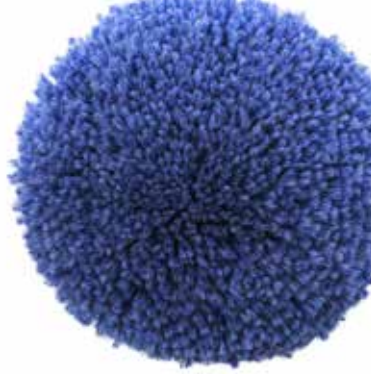
AF22  
Black



AF23  
Sage



AF24  
Fiji



AF29  
Canard



AF32  
Blue



AF33  
Nuit



# OUTDOOR FABRICS

## WEAVERS OF DREAMS

Tailoring is a noble way of describing charm and elegance. The fabrics, but we could define them as canvases, designed and made for DFN by **Pierre Frey**, Maison of fine weavers of exquisite artistic ability, convey just this, with a single glance, a single touch. Fabric is art. And when art meets high craftsmanship and the most refined design, you enter the wonderful world of DFN. There are six proposals for upholstery and curtains: **Papillons California**, a multicoloured triumph in the French Second Empire style. **Mauritius**, the idyllic beauty of the remote island. **Le jardin du palais**, a Persian classic from the 16th century Safavid dynasty. **A la table du roi**, pineapple, the king of fruits, reproduced from a refined 19th century document. **Mikado**, one of the House's most emblematic prints, is based on an archival canvas called "The Chinese Acrobats". **Toile de Nantes** is a high-impact ikat pattern that strikes the right balance in terms of design, shape and colour. Magnificent, sophisticated, water-repellent, lightfast fabrics with an extraordinary linen effect. Canvases of innate elegance, with a great scenic impact, can be used both in the curtains and in the upholstery of any product designed by DFN. They are the masterpieces that enhance space and the pleasure of living.

















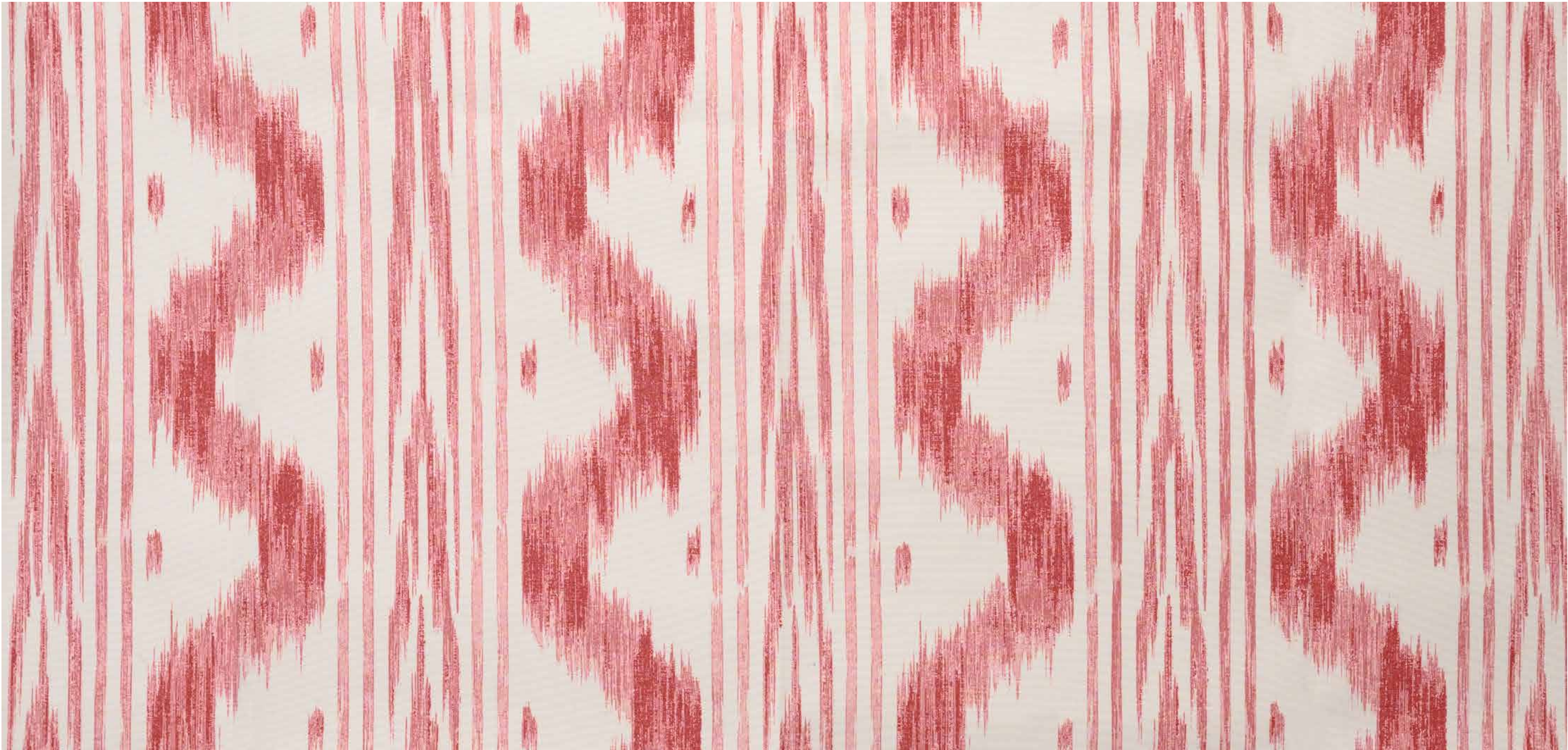














# DFN

OUTDOOR

DFN srl - Italy  
*via D. Albertario 50 – 61032 – Fano (PU)*  
*T. 00 39 0721 1835821*

*e-mail: [info@dfnsrl.com](mailto:info@dfnsrl.com)*

[www.dfnsrl.com](http://www.dfnsrl.com)